

POLAR ADVENTURES

Schiffs- und Flug- Expeditionen
in Arktis und Antarktis



Arktis Antarktis Expeditions-Seereisen MV POLAR PIONEER

POLARADVENTURES Schiffs- und Flug-Expeditionen in Arktis und Antarktis
Reiseagentur * Heinrich-Böll-Str. 40 * D-21335 Lüneburg * Deutschland
Tel +49-4131- 223474 Fax +49-4131-54255 infos@polaradventures.de www.polaradventures.de



WATERPROOF®

CRUISES & EXPEDITIONS



ANTARCTICA &
SOUTH GEORGIA
POLAR PIONEER
05-24 FEBRUARY 2024



Dear Explorer,

It has been over 20 years since I operated my first expedition in Antarctica and many have followed since. Organizing trips to the polar regions is a fascinating and challenging undertaking. Personally, I am closely involved as an advisor in the development of guidelines and sustainable tourism to Antarctica and I love to share my passion with you! Every voyage we offer is designed around activities and sceneries that make your adventurous heart skip a beat.

We designed this voyage to escape the crowds and experience nature and wildlife in a unique way. The flexibility of a small expedition ship makes it possible to optimize every opportunity to show you the best of the Antarctic. Accompanied by experts and a small group of like-minded guests, you will uncover the wilderness of this unique region. The combination of wildlife, beautiful scenery and a comfortable expedition ship, truly creates an unforgettable experience.

We will alter our plans to take advantage of (day)light, weather, wildlife sightings and other one-of-a-kind opportunities which can vary from day to day. Bring a good portion of adventurous spirit and be prepared for cold but rewarding days out at sea. This is true expedition style traveling!

Marlynda Elstgeest

CEO & Owner
Waterproof Cruises & Expeditions





ANTARCTICA & SOUTH GEORGIA

THE ULTIMATE WILDLIFE EXPEDITION CRUISE

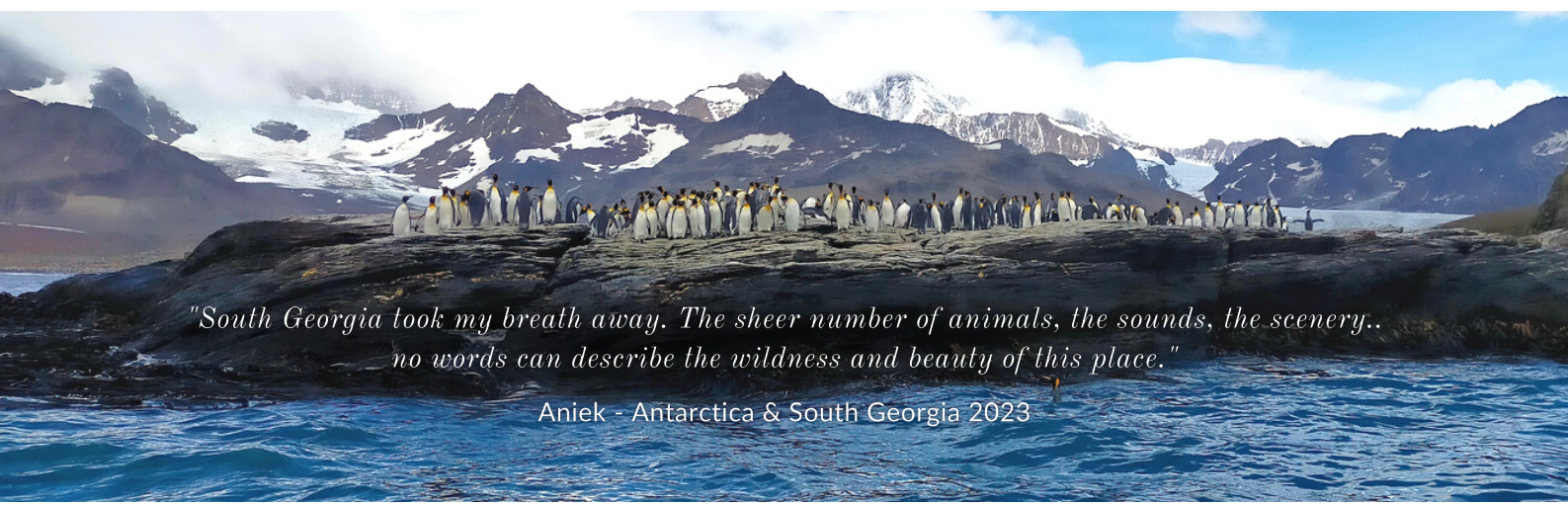
DATE: 05 – 24 FEBRUARY 2024 | **DURATION:** 20 DAYS | **SHIP:** POLAR PIONEER | **PASSENGERS:** 50

Join our exclusive small group voyage to the Southern Ocean in February 2024! During this extensive 20-day expedition we'll witness the pristine beauty of the Antarctic Peninsula combined with an in-depth exploration of South Georgia. An unparalleled polar adventure, both above and below the waves! Our Polar Snorkeling activity offers a unique look into the marine life of the cold Antarctic waters, something only few people have ever attempted!

Early February is the peak of summer and prime-time for travelling to Antarctica and the Sub-Antarctic islands, especially for wildlife-lovers. Expect noisy penguin chicks waiting for their parents, and seal pups wobbling around the beaches. On the Antarctic continent we are likely to see Gentoo, Adélie, and Chinstrap penguins and we'll keep an eye out for various species of whales and seals. We will immerse ourselves in the wildlife-rich islands of South Georgia, home to the largest King penguin rookeries in the world. These elegant penguins share their land with enormous Elephant Seals. The large beachmasters will likely have left by the time we arrive, but you might see some young males practicing their fighting skills. Imagine taking a swim here to have a look at these unique animals under water!

During our voyage we will enjoy around 20 hours of light per day, plenty of time for excursions, shore landings and snorkeling activities. Our experienced guides will share their knowledge about the nature and history of the polar regions during the outings and lectures on board. No less than 7 expert guides accompany you on this trip. The small group size of **only 50 guests** will allow for an intimate and exclusive experience, almost like a private expedition!

This epic voyage takes place on our beloved vessel Polar Pioneer, the smallest expedition ship sailing in the Antarctic. Over the years, we've had many memorable expedition cruises on board Polar Pioneer and we are very excited to travel on board this wonderful ship once again. What we like most about the ship is its true expedition spirit and rich history, something you won't find on many other vessels.



*"South Georgia took my breath away. The sheer number of animals, the sounds, the scenery..
no words can describe the wildness and beauty of this place."*

Aniek - Antarctica & South Georgia 2023

EXAMPLE ITINERARY

EMBRACE THE UNEXPECTED

This is a sample itinerary. We do our utmost to guarantee the best experience, unfortunately we have no control of the weather, ice conditions or wildlife behaviour. Our itineraries are flexible and we will alter our plans to take advantage of light, weather, wildlife sightings and other one-of-a-kind opportunities which can vary from day to day. The success of this trip is based on realistic expectations and your personal flexibility. For those participating in our Polar Snorkeling activity we plan to do one or two excursions per day. While others go ashore or for zodiac cruises, you will have a chance to go snorkeling. Nothing is mandatory, if you choose to skip the snorkeling activity you are more than welcome to join the other excursions.

DAY 1-3 | DEPARTURE

Our voyage starts from Ushuaia (Argentina). You will board the ship in the afternoon and meet your fellow expeditioners. A select group of only 50 people with whom you will experience this great adventure. After we exit the Beagle Channel we find ourselves on the open ocean for a 2-day crossing of the Drake Passage. During our sea voyage you might see albatrosses and storm petrels flying alongside the ship, so it's always worth having a look outside. Grab your camera and try to capture one mid-flight.

DAY 4-9 | ANTARCTICA

Once we arrive in the calmer waters off the coast of the Antarctic Peninsula, we will generally plan landings and zodiac excursions two times a day. Sometimes we cruise along spectacular ice cliffs, watch whales that are feeding near the surface or go ashore for a hike and a close encounter with penguins. In between landings our expert team will share their knowledgeable lectures on wildlife, geology, history and geography of the Antarctic Peninsula.



Places we might visit include islands of the coast of Antarctica as well as locations on the continent itself. Like Paradise Harbour, a protected bay surrounded by magnificent mountain peaks and spectacular glaciers. The wildlife-rich Half Moon Island, where a large Chinstrap penguin rookery lives between basaltic turrets coloured by yellow and orange lichens. Volcanic Deception Island with black beaches and steam rising from hot springs along the shore. And the famous Lemaire Channel where the water is often so still that it perfectly reflects the high cliffs that rise on both sides of the icepacked channel. Throughout our voyage we'll keep an eye out for wildlife, as leopard seals, whales and penguins may show themselves at any time!

DAY 10-12 | AT SEA

We leave the white continent behind us and set course to the north east. Our voyage from Antarctica to South Georgia will take 2 to 3 days. During our crossing we might stop at the South Orkney Islands for a visit to the Argentine scientific station Orcadas Base, before we sail the final stretch to South Georgia. During the days at sea you will again have the chance to see different types of sea birds and also whales that might pop up close to the ship.



DAY 13-17 | SOUTH GEORGIA

South Georgia is one of the most isolated places on our planet, shaped by ice and volcanic activity throughout millennia. A steep mountain range traces the spine of this long, narrow island, creating a breathtaking backdrop. Unlike Antarctica, where hardly any remnants of human activity can be found, South Georgia has a long and turbulent history of human interference. In **Grytviken**, a place we certainly hope to visit, the Elephant Seals sleep amidst the ruins of an old whaling factory. The famous polar explorer Sir Ernest Shackleton was laid to rest here in a small cemetery in the bay. As we explore South Georgia, we will have the opportunity to reflect on Shackleton's epic journey with his ship the 'Endurance' which was recently found in the Weddell Sea where it sank in 1915.

Places we might visit:

St. Andrews Bay - The sandy black beach is a resting place for dozens of Elephant seals that haul out on the shore to moult. Behind the beach, the sight, sound and smell of thousands of King penguins at different stages of their breeding cycle will be overwhelming. The glacial river that runs through the landscape will be alive with penguin chicks and seal pups testing their aquatic skills. If we lift our gaze from the wildlife for a moment, we will glimpse the snow-capped peaks of some of the world's most spectacular mountains and glaciers. But keep your eyes out for young fur seals, they are quick and feisty.



Godthul - Imagine indented bays lined with bleached whalebones, teeming with Fur seals and penguin chicks waiting for their parents. Here you have the opportunity to clamber through the tussock to a spectacular plateau offering magnificent views across the island and the waters beyond. A careful descent leads us to a magnificent Macaroni penguin rookery.

Fortuna Bay - The black sandy beach is surrounded by king penguins and fur seals of all ages and sizes, with a backdrop of lush green land and mountains. You might be able to walk up a small hill from where you will have an overview of a king penguin colony with moulting adults and fluffy brown chicks, thousands of them!

Salisbury Plain - As soon as the ship anchors near Salisbury Plain, the smell of thousands of King Penguins will sweep you off your feet. With around 60.000 pairs of King Penguins, Salisbury Plain is home to the second largest colony in the world. No surprise it has been the focus of countless nature documentaries throughout the years. It is one of our favourite sites on South Georgia, even though landing here is often difficult since the area is not sheltered from the large ocean swells. If you are lucky enough to go on land here, make sure to bring an extra memory card for your camera, you will likely need it!

Gold Harbour - One of the most picturesque bays of South Georgia with several glaciers tumbling down the mountain. A waterfall of meltwater oozes down the sharp, steep slope, turning the sea bright blue. On the beach you can see thousands upon thousands of orange and black heads, King Penguins, 250,000 of them all clumped together on one very small beach. When visiting this magnificent site, keep an eye out for Leopard Seals. They're often hiding in the kelp, trying to ambush an unfortunate penguin.

DAY 18-20 | AT SEA

We will leave the wildlife of South Georgia behind and commence the final stretch of our voyage. Another 2 days at sea will take us to the Falkland Islands. Our adventure ends in Stanley, the tiny capital of the Falklands. There is only one flight per week from the Falklands to Punta Arenas (Chile). You can either choose to extend your stay with a week on the islands, or fly out on the day of disembarkation.





SIGNATURE TRIP

BY WATERPROOF EXPEDITIONS

This voyage is a 'Waterproof Signature Trip', one of our carefully selected Waterproof branded trips with unique features. Small ship expedition cruising is the best way to get to those special places, remote islands and fascinating small harbours of the world. Travelling with a group of like-minded people and experiencing wildlife, culture and nature up close while enjoying personal service. These small-group expeditions are guided by a team of experts, each with their own specialism. We take pride in our passion to share this unique experience with you.

*"I like travelling with like-minded people and Waterproof simply offers what I like best:
A quality expedition experience, in-depth knowledge and personal service"*

G. Johnson – USA



PHOTOGRAPHY

Free

This expedition is a great opportunity for photographers who want quality time with the (sub)Antarctic wildlife and landscape. Polar Pioneer offers large deck spaces with raised areas making her perfect for photography from the ship. As our voyage takes place mid-season, this expedition will yield extraordinary photographic opportunities. You will enjoy long days, resulting in plenty of light for photography. During this voyage we will spend more days on South Georgia than most other expedition cruises, offering you enough time to get excellent pictures. We will attempt to visit locations that are often featured in nature and wildlife documentaries. Among our expedition guides there are several expert photographers who are happy to assist you and share their knowledge about photography in the polar regions.



POLAR SNORKELING

BY WATERPROOF EXPEDITIONS

Waterproof Cruises & Expeditions has invented the fun activity Polar Snorkeling back in 2010. Over the years it has proven to be an exceptional way to explore the polar regions' marine life below the surface, something only few people have ever attempted! You might get to snorkel alongside bright blue icebergs, see penguins swim under water at an incredible speed, or even snorkel with humpback whales! It is our goal to go snorkeling as often as possible, weather and ice conditions permitting. We can't guarantee a certain number of outings. The expedition leader will decide when it's safe to go in the water.

*"Visiting Antarctica is about more than just viewing the scenery.
The animals above and in the water make your experience completely unique."*

Martin McGrath - Polar Dive Master



SNORKELING ACTIVITY

Optional: \$ 850

For the most comfortable experience, we provide high quality polar snorkeling equipment by our sister-company [Waterproof International](#) in Sweden. An awardwinning company and experts in designing drysuits for cold water snorkeling and diving.

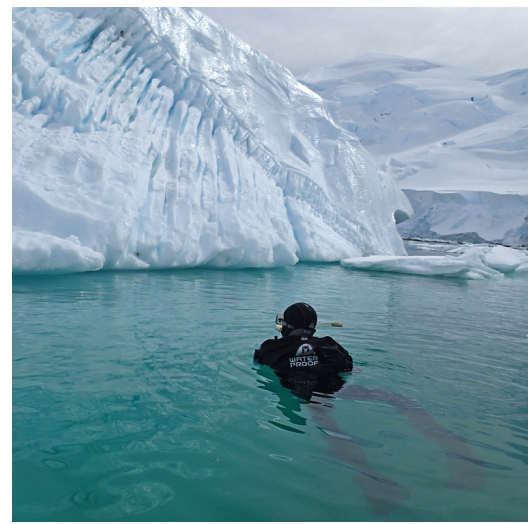
Our Polar Snorkeling package includes:

- Waterproof Snorkeling Drysuit (*only if size is available*)
- Waterproof High Visibility Hood
- Waterproof 7 mm Mittens
- Waterproof Marine Boots
- Fins, Snorkel and Mask

Please note that we only have a limited range of drysuit sizes available on board. We offer sizes: S - M - L - XL -XXL Refer to our [size chart here](#) for details.

Please note, we need a minimum number of 8 participants for the snorkeling activity to take place.

Snorkeling is intended for persons in reasonably good health. You need to have a certain level of fitness and strength in order to participate. Actively swimming and getting in and out of the zodiac can be challenging. You have to be able to lift yourself out of the water, with the help of small ladder, and into the zodiac.





EXPEDITION SHIP POLAR PIONEER

*A TRUE SMALL
EXPEDITION VESSEL*

CAPACITY: 50 PASSENGERS | **CABINS:** 26 | **DECKS:** 3 | **REFURBISHED:** 2022 | **LENGTH:** 72M

MV Polar Pioneer is one of our favorite expedition vessels. After an extensive refurbishment she is now sailing the Arctic and Antarctica again. Those that have travelled on Polar Pioneer before will recognize this amazing expedition ship, but at the same time notice a higher standard during their expedition.



MV Polar Pioneer is one of our favourite ships. With only 50 guests on board it's the smallest expedition vessel sailing in Antarctica. There is room for all guests in the 6 zodiacs at once, a great convenience, minimizing waiting times to go ashore. Smaller group size means less time required to complete full operations, which allows for more operational flexibility to take advantage of any opportunity that arises. Less feet on shore at a given time also means less impact on vegetation and wildlife behavior during our landings, an environmental advantage compared to larger vessels. Carrying the highest ice class, 1A Super, she has no problem venturing into the ice of our polar regions. It's the perfect expedition vessel for wildlife viewing and photography. The spacious observation decks provide sufficient space to watch for wildlife or follow the ship's progress. Inside, you can enjoy the nicely refurbished lounge and sauna, or spend some time on the bridge for a chat with the captain while whale watching.



CABINS



EXECUTIVE SUITE

Our most deluxe cabin features a separate sleeping area with double bed, seating area with a large sofa, table, en-suite bathroom and large windows for optimal viewing opportunities. It also includes a desk, fridge and TV. Located on the upper deck.



MINI SUITE

The Mini Suites are spacious cabins with separate sleeping area (double bed), seating area with sofa bed, an en-suite bathroom and large windows to enjoy the view. These also feature a desk, fridge and TV. Located on the upper deck.



TWIN PRIVATE CABIN

Twin Private Cabins accommodate two people and offer the convenience of an en-suite bathroom. They feature two single beds, an outside window, desk and ample storage space. Please note, some cabins have an upper and lower bunk. Located on the upper and main deck.



TWIN (SHARED BATHROOM)

Twin Public Cabins with shared bathrooms are surprisingly spacious, with two single beds, a desk, bench, washbasin, porthole and ample storage space. Bathrooms are located close by on the same deck. Located on the lower deck,



TRIPLE (SHARED BATHROOM)

The Triple Cabins feature one bunk bed and one lower bed, as well as a desk, bench, washbasin, porthole and ample storage space. Perfect for sharing with family or friends. Bathrooms are located close by on the same deck. Located on the lower deck,



DATES & RATES

Dates	05 – 24 February 2024 (20 days / 19 nights)	
Embark	Ushuaia (Argentina)	
Disembark	Port Stanley (The Falkland Islands)	
Passengers	50 guests	
Cabins	Triple Cabin*	USD \$ 16.400
	Twin Cabin*	USD \$ 18.795
	Twin Private	USD \$ 20.750
	Mini Suite	USD \$ 22.800
	Captains Suite	USD \$ 23.995

All prices are per person, based on a full occupancy. The single use supplement is 70% (100% on the Suites). You can also book on 'sharing base', in this case no single supplement is charged if we can find another guest of the same gender to share your cabin.

**shared bathroom*

Optional activity

Polar Snorkeling USD \$ 850

Price per person. Please note that we need a minimum of 8 participants for this activity to take place. We reserve the right to cancel this activity due to unforeseen circumstances.

Flights from Falklands to Punta Arenas

Our voyage ends in Port Stanley, Falkland Islands. There is only one flight per week from the Falklands to Punta Arenas (Chile). You can either choose to extend your stay with one week, or fly out on the day of disembarkation. We will aim to arrive in Port Stanley in the evening of the 23rd of February 2024, in order for you to take the flight on the 24th of February. The captain will always keep an eye on the weather conditions and will adapt his schedule in order for the ship to arrive in time. Please find the flight schedule below.

Flight: Latam Airlines - LA894

Date: 24 Feb 2024

Departure: Mount Pleasant (MPN) Falkland Islands: 13:57

Arrival: Punta Arenas (PUQ) Chile 15:39

Total flight time: 1 hrs 45

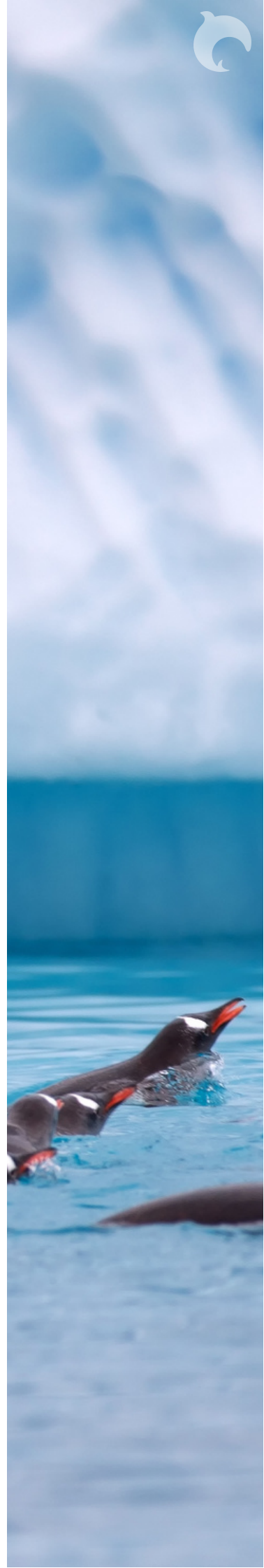
Ticket price: starting from Euro 250 pp

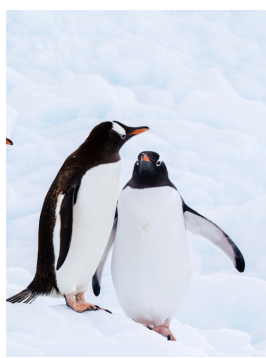
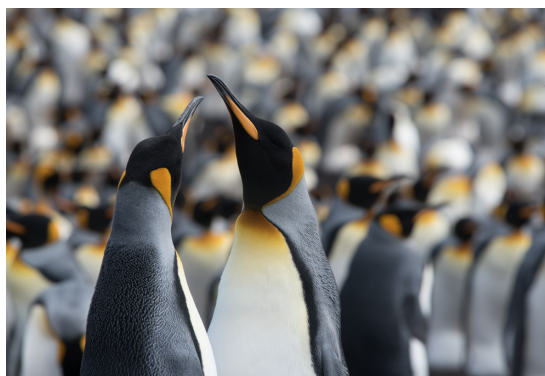
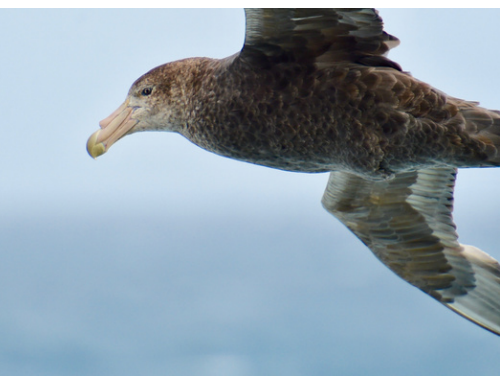
Included

- 19 nights on board Polar Pioneer
- All meals on board
- Coffee and tea
- Experienced Expedition Guides
- Guiding ashore and talks on board

Excluded

- Flights & hotels
- Travel and cancellation insurance
- Gratuities
- Personal expenses (bar/shop/etc.)
- Polar Snorkeling activity USD 850pp







Waterproof Cruises & Expeditions is a member of IAATO

IAATO (International Association of Antarctic Touroperators) members work together to develop, adopt and implement operational standards that mitigate potential environmental impacts. Numerous guidelines have been adopted over the last 25 years that have proven to be successful in avoiding such impacts. Waterproof Expeditions works with IAATO operators and takes great pride in educating passengers on wilderness etiquette and visitor guidelines.

Become an ambassador

Having no native population, Antarctica needs ambassadors who will champion this unique environment in a global context. Once you've seen the awe inspiring beauty of Antarctica with your own eyes, you will truly understand what's at stake. We encourage our guests to take part and follow developments in the news and in your governments regarding the science and management of climate change, particularly as it affects Polar Regions. Learn more about climate change, its implications for the global commons and what you can do to help minimize and mitigate the impact.



WATERPROOF®
CRUISES & EXPEDITIONS



Antarctica Explorer

Small Group Photography & Wildlife Expedition

📍 Ushuaia, Argentina

🕒 12 days

📅 January

💰 US\$ 11,490

Join Secret Atlas on a 12-day in-depth Antarctica cruise with an extended focus on wildlife viewing and photography in Antarctic peninsula. This expedition is aimed at those wanting to spend the maximum amount of unhurried time ashore observing wildlife and is suited for photographers and wildlife watchers.

What makes this trip even more special is that our vessel takes just 48 guests, the smallest group size in Antarctica. When you are ashore you will be in a small group of just 12 guests for an intimate wildlife and photography experience. Traveling on a small expedition vessel gives us more flexibility, more time ashore and allows us to visit landing sites that the large cruise ships can't visit.



Introduction

Explore the Antarctic peninsula on a 12-day small ship expedition cruise with just 48 guests in total. This expedition takes place on the newly refitted [Polar Pioneer](#), the smallest and most rugged expedition cruise ship visiting South Georgia.

On this expedition we will do an exploration of the South Shetland Islands and Antarctic Peninsula visiting many places of interest for short hikes, wildlife watching and historical sites. As our group size is under 50 we will have access to all landing sites, some of which are off limit to larger vessels.

Expedition Highlights

- Small group experience of just 48 guests, the smallest group size available in Antarctica.
- A rare opportunity to join a in-depth exploration of the Antarctic Peninsula with extended time ashore to view and photograph wildlife.
- Explore key wildlife sites on the South Shetland Islands and Antarctic Peninsula.
- Comfortable, and intimate ice-strengthened expedition vessel with sauna.
- Encounter Antarctica's wildlife including penguins, fur and leopard seals and whales.
- This trip give you the maximum time ashore. All guests can fit in the Zodiacs and land at the same time, so no waiting time.
- Numerous opportunities to photograph Antarctica's icy and stunning landscapes from the ship and shore.
- Led by highly experienced expedition leaders and photography guides.

Learn From our Knowledgeable Guides

An Antarctica micro cruise comes with knowledgeable guides who are passionate about the region and have a wealth of knowledge about the wildlife, history, and ecology of the region. They can provide you with a deeper understanding and appreciation of the Antarctic ecosystem.

The Voyage

Day 1 Welcome aboard! Depart Ushuaia, Argentina Embarkation is set at 16:00 Local Time

Day 2 At Sea

Day 3 First landing on South Shetland Islands

Day 4 – 9 Exploring the Antarctic peninsula

Day 10 – 11 At Sea

Day 12 Arrive Ushuaia, Argentina. Disembarkation is set at 09:00 Local Time

* Every Antarctica Micro Cruise follows a different route depending on the conditions and opportunities we encounter. The map and itinerary gives you an idea of the area we will explore on this expedition.



Antarctica Cruise Day by Day



Day 1

Ushuaia

Welcome to Ushuaia, Argentina, also known by its nickname 'The End of the World'. In the afternoon we embark on the Polar Pioneer for the expedition of a lifetime. This tough, ice-strengthened expedition vessel will be our comfortable home and base for exploring for the next 11 nights.

After settling into your cabin there will be a full safety briefing and an introduction from the expedition team. You will meet the experts who will be your guides for the duration of your voyage who have extensive knowledge about Antarctica, the history, wildlife, and geology.

In the afternoon we will sail through the Beagle channel. It is the perfect time to spend time out on deck wildlife watching and appreciating the magnificent landscapes of Patagonia.

Day 2 – 3

Crossing the Drake Passage

As we sail south we will cross the famed Drake passage that separates Antarctica from the South American continent. It is the ideal time to spend time on deck watching the dozens of wandering albatrosses that circle the ship.

During these two days at sea, our experts will get you excited for what lies ahead with a series of lectures on the wildlife, history, and environment of Antarctica. As we cross the Antarctic convergence zone the air will chill and we will spend time on deck looking for the first icebergs and keeping a sharp lookout for whales that are frequently sighted.

An amazing part of any Antarctica expedition is sighting the land of the 7th continent for the first time.





Day 4-9

Exploring the Antarctic Peninsula

The focus of this expedition is to spend the maximum amount of time exploring in an unhurried way which is only possible in a small group. Each day our expedition team will make decisions about where to explore based on the weather and sea ice conditions.

We will drop anchor in remote bays framed by icy mountains. Our plan is to explore key wildlife sites on the South Shetland Islands and the Antarctic Peninsula. Here we will encounter penguin rookeries up close. Gentoo's, Adleie's and Chin Straps are all residents here. We aim to do shore landings twice a day led by our expedition leaders. We will use the Zodiacs for short cruises to explore the icy waters in an intimate way. Keep an eye out for icebergs! There are plenty here.

The nutrient-rich icy seas are home to an abundance of wildlife including leopard, crabeater, Weddell and elephant seals, Orcas, Minke, and Humpback Whales.

If the opportunity arises sometimes it is possible to visit a scientific research station or historical site. As with all expeditions, flexibility is a must.

The beauty of an Antarctica cruise on Polar Pioneer is that all our guests can Zodiac cruise or visit the shore at the same time. The process of going ashore is much more efficient than a larger ship so our guests get to spend more time exploring and less time waiting.

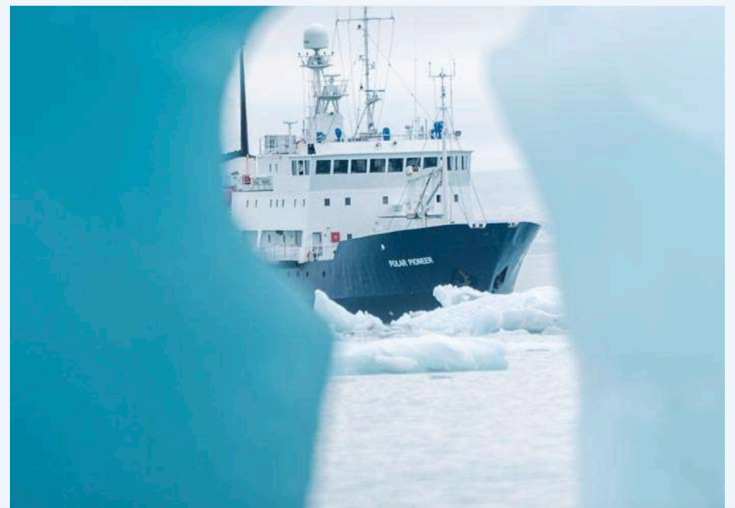
Day 10 – 11

At Sea

After 7 nights of exploring Antarctica, we will sail north towards Ushuaia. Our expedition team will continue the educational presentations. It's a good chance to relax, warm up in the sauna and enjoy a drink at the bar.

The expedition leader will do a recap of the voyage and it is an opportunity to share moments and photos with your fellow explorers.

As we approach the South American continent, if the conditions allow, there may be a possibility to sight the mystical Cape Horn before we make our way into the Beagle channel.





Day 12

Ushuaia

In the morning we arrive back at the port of Ushuaia. After breakfast, we say our goodbyes after making new friends and sharing a wonderful adventure together.

The above itinerary is a guide only. A part of any Antarctica cruise is the flexibility to take advantage of the weather and ice conditions. Our expedition leader will make sure you see as much as possible.

Inside This Antarctica Cruise

Our trips are aimed at anyone with a passion for exploring Antarctica with a small group of like minded individuals on a comfortable small ship cruise and include:



Amazing Wildlife

We will explore areas within the Antarctic Peninsula that are very rarely visited. This is a chance to experience a true, untouched wilderness in a small group.



Stunning Scenery

We will encounter mighty glaciers, cruise tranquil steep-sided fjords and spend time outside exploring the beautiful untouched wilderness.



Climate Compensated

Caring for the environment is what we do. For this Antarctica cruise we plant trees in Greenland to offset the emissions. As a member of [AECO](#), we follow strict guidelines to ensure minimal disturbance to wildlife and natural sites.



Expedition Leader and Guide

An aspect of our journeys is to learn about the place you are visiting. Our onboard guides are the core of what we do and will share their passion and knowledge of Antarctica throughout the trip. We offer the best guide to guest ratio available.



Zodiac landing craft for shore landings

Shore landings are the essence of every expedition and your guides will take you exploring on a daily basis. The vessel is equipped with landing craft that can be used to reach remote beaches so you can experience the wilderness firsthand.



Expedition Vessel With 12 Guests

We believe the best way to experience an environmentally sensitive place such as the Antarctic Peninsula is with a small group of travelers. New expedition cruise ships now take up to 350 passengers, we believe smaller is better.

Antarctica Cruise Dates and Prices

Prices quoted are per person. Twin and double cabins are based on double occupancy.

1st January – 12th January 2024

Cabin Type	Persons per Cabin	Price per person
Triple Cabin with Shared Facilities	3	US\$ 11,490
Twin Cabin with Shared Facilities	2	US\$ 12,870
Twin Cabin with Private Facilities	2	US\$ 13,790
Mini Suite	2	US\$ 14,790
Captain's Suite	2	US\$ 15,990



South Georgia Explorer

Small Group Photography & Wildlife Expedition

📍 Port Stanley, Falkland Islands

🕒 15 Days

📅 February

💰 Price From US\$ 13,995

Embark on a 15-day wildlife and photography adventure in [South Georgia](#) with Secret Atlas. This **unique expedition** offers ample time ashore to observe wildlife up close and personal. With **just 48 guests** on board and a small expedition vessel, you'll have an intimate experience and **access 100% of landing sites**, some of them are restricted to ships carrying over 50 guests.

Leading the expedition is a team of renowned experts, each bringing their own unique expertise and passion to enhance your journey.

[Mariano Curiel](#), the expedition leader, boasts over two decades of experience guiding polar expeditions. His pioneering spirit and respect for the polar regions make him the ideal leader for this adventure. Having traversed Antarctica, Greenland, and Svalbard, Mariano's expertise ensures a meticulously managed and exceptional journey.

[Paul Copestake](#) is a bird expert with a deep connection to Antarctica, spanning three generations. His extensive fieldwork and study have led him to South Georgia, where he explores the magic of its wildlife. With a wealth of knowledge in biology and science, Paul shares captivating anecdotes and stories, deepening your understanding and appreciation of South Georgia's birdlife and its conservation. Fun fact: 'Copestake Peak' in South Georgia was named after him.

[Jonas Beyer](#), a seasoned wildlife photographer, will guide you through the world of capturing the essence of the polar regions. With extensive experience in Greenland, Svalbard, Antarctica, and beyond, Jonas's award-winning photography showcases his talent for immortalizing nature's beauty. Under his guidance, you'll receive invaluable tips to enhance your own photography skills, creating stunning visual memories.



A word from **Mariano Curiel**, Expedition Leader

The night is dark, we are at anchor, the form of a mountainous landscape can barely be perceived and the resonant sounds from the beasts on the shores complete the picture. The water moves as hundreds of seals and penguins surround our ship, and the Southern Cross stands out as a witness confirming to us that we are actually there. This is a moment in South Georgia Island, an enchanted remote spot hidden in the Southern Ocean where expedition days are big, the immensity of wildlife conquers every angle of our attention, and where the heavy footsteps of some of the greatest polar explorers in history are sensed in first person. This is the place where the Boss rests in peace, where the albatrosses breed and fly free, and where huge abandoned whaling stations act as the living memory of what humans can do.

In brief, South Georgia delivers one of the most intense wildlife encounters that I have always experienced, with an additional layer of vivid history and conservation learned lessons. I find it impossible to compare to other places, even more so as part of my heritage told the South Georgia story about 70 years ago, a very different one when my grandfather did some seasons stationed at Grytviken.

Expedition Highlights

- A rare opportunity to join an in-depth exploration of South Georgia with extended time ashore.
- Encounter [South Georgia's wildlife](#). This trip has the most time spent ashore viewing king penguin colonies, elephant seals, fur seals and an abundance of birdlife including albatrosses.
- Explore key wildlife sites including Prion Island, Saint Andrews Bay, Salisbury Plain and Gold Harbour.
- Small, intimate group size. The ship takes just 48 and ashore guests are in a group of 12.
- Numerous opportunities to photograph South Georgia's wild and stunning landscapes from the ship and shore.
- Develop your photography skills in the field with our highly experienced photography guides.
- Led by highly experienced expedition leaders and photography guides.
- Comfortable, and intimate ice-strengthened expedition vessel.
- Access to all landing sites (some are restricted to over 50 guests)

Learn and Develop New Photography Skills

Our photography guides offer assistance where required to help you improve your skills and get the best images possible. Where time allows tutorials will be carried out onboard, but the emphasis is always on maximising time outside in the field.

Our expedition team has extensive experience in SouthGeorgia and will seek out the optimal places for photography based on the conditions.

Wildlife Highlights in February and March

Each season offers amazing opportunities for encountering South Georgia's wildlife. Our later season voyage offers a wondrous spectacle of nature that is ideal or photographers and wildlife lovers looking to see the newly born animals.

Expect an abundance of baby fur seals which cover South Georgia's beaches at this time of year which makes an excellent photographic subject that you will not find during other months.

February and March offers the unique opportunity to land on Prion Island, which is closed to visitors for most of the season and off limits to larger ships year round, to witness the spectacle of Wandering Albatross's feeding their newborn chicks at their nests.

Young king penguins are starting to test the cold waters for the first time at the rookeries in Saint Andrews Bay and Salisbury plain. Gentoo, Macaroni and Chinstrap penguins gather in large creches as they start to fledge.

This season is the most active for marine life and offers the best opportunities for whale watching in South Georgia and species such as minke, humpback, fin and orcas are at their most numerous.

— — —

The Voyage

Day 1 LATAM flight landing at Mount Pleasant Airport, Falkland Islands (flight not included). Transfer bus to the harbour for embarkation at 16:00 Local Time.

Day 2-3 At Sea

Day 4 First landing on South Georgia

Day 5 – 12 Exploring South Georgia

Day 13 – 14 At Sea

Day 15 Arrive Port Stanley, disembarkation set at 09:00 Local Time. Transfer bus to Mount Pleasant Airport (flight not included).



South Georgia Photography Tour Day by Day



Day 1

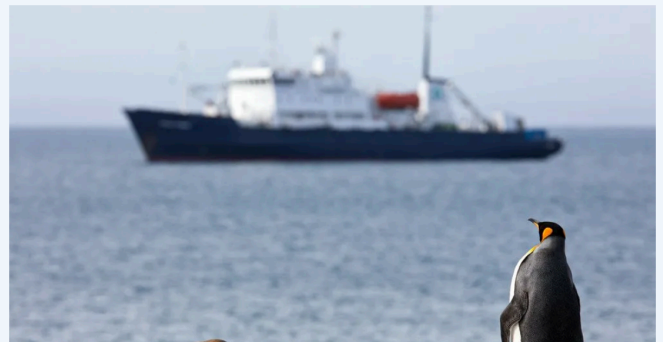
Falkland Islands

In the afternoon we embark Polar Pioneer in Port Stanley in the Falkland Islands ready for an adventure of a lifetime. The Falkland Islands are accessible by flights from Chile and the UK (flights not included). A transfer bus will take you from Mount Pleasant Airport to the harbour for embarkation. We will depart late afternoon and set sail towards South Georgia. We highly recommend extending your stay before or after our expedition. [Falkland Islands Holidays](#) offer tailor-made itineraries for all kinds of travelers. Whether you're into birdwatching, photography, war history, fishing, or simply want to explore the wildlife, community, geography, and hospitality of the islands, they have the perfect itinerary for you. More info [here](#)

Day 2 – 3

Sailing to South Georgia

As we sail across the Scotia sea towards South Georgia we will spend time on deck looking out for wildlife. Wandering Albatrosses often follow the ship. In the water it is possible to see whales and Orcas. During the sea days our guiding team will do lectures on the wildlife, history and geology of South Georgia. In the afternoon of day 3 we will sight South Georgia for the first time.



Day 4 – 7

Exploring South Georgia

The plan is to sail along the entire coast of South Georgia and to make landings on all the days. The main focuses of this expedition is to visit as many wildlife sites as possible. South Georgia is home to 450,000 king penguins offering some of the greatest concentrations of wildlife on the planet. We aim to visit key penguin breeding colonies at St Andrew's Bay, Salisbury Plain and Gold Harbour. An advantage of a longer trip allows is that it allows us a much larger weather window to visit different sites.



Day 8 – 12

Exploring South Georgia

Other landing sites could include Prion Island to see nesting albatrosses, a site that is only accessible to ships carrying under 50 guests. Cooper Bay on the islands south is home to Macaroni penguins living in the tussock grass. Alongside wildlife, South Georgia is home to fascinating history and we will visit Grytviken, a former whaling station on South Georgia and home to the grave of explorer Ernest Shackleton. We also plan to explore the Drygalski fjord home to some of the islands most breathtaking landscapes.



Day 13 – 15

At Sea & Falkland Islands

As we sail towards the Falkland Islands our guiding team will do a series of lectures to finish off our exciting adventure. The final 2 sailing days offers a chance to relax onboard, take a sauna and share stories from the expedition with fellow guests. On safe arrival in Port Stanley we will disembark after breakfast on the final day.

The above itinerary is a guide only. A part of any expedition is the flexibility to take advantage of the weather conditions which are highly variable in South Georgia. Our expedition team will make sure you see as much as possible.



Inside This South Georgia Expedition

Our trips are aimed at anyone with a passion for exploring the Arctic with a small group of like minded individuals on a comfortable small ship cruise and include :



Expedition Vessel With 48 Guests

We believe the best way to experience an environmentally sensitive place such as South Georgia is with a small group of travelers. New expedition cruise ships now take up to 350 passengers, we believe smaller is better and that is why we take the smallest group sizes available.



Expedition Leader and Guides

An aspect of our journeys is to learn about the place you are visiting. Our onboard guides are the core of what we do and will share their passion and knowledge of South Georgia throughout the trip. We offer the best guide to guest ratio available, and have 5 expert guides, one for every 10 guests.



Zodiac landing craft for shore landings

Shore landings are the essence of every expedition and your guides will take you exploring on a daily basis. The vessel is equipped with 6 landing craft that can be used to reach remote beaches so you can experience the wilderness firsthand. The beauty of a small ship expedition is that everyone onboard can fit in a Zodiac at the same time, so no waiting to go ashore.



Climate Compensated

Caring for the environment is what we do. For every trip we run we plant trees in Greenland to offset the emissions. As a member of [AECO](#), we follow strict guidelines to ensure minimal disturbance to wildlife and natural sites.

Meet Your Guides



PAUL COPESTAKE

BIRD EXPERT

Paul is a passionate ornithologist with a deep connection to Antarctica. Through fieldwork and expeditions, he has gained extensive experience on South Georgia and the Antarctic Peninsula. Paul's love for birds, coupled with his scientific background, makes him a valuable asset on any expedition. He is committed to bird conservation and eagerly shares his knowledge and experiences with others. When not exploring the Scottish Highlands, Paul resides in Ullapool with his family, contributing to national bird

SURVEYS.



MARIANO CURIEL

EXPEDITION LEADER

Mariano, an experienced polar guide and expedition leader from Argentina, has dedicated over two decades to exploring and leading projects in the polar regions. After his first encounter with Antarctica, he was captivated by the polar landscapes and never looked back. Mariano's expertise spans across Antarctica, Greenland, and Svalbard, where he has participated in over two hundred sea, land, and ice-based expeditions. He holds the distinction of being the first Argentinian to ski across Greenland in 2016.



JONAS BEYER

PHOTOGRAPHY EXPERT

Jonas is an experienced wildlife photographer specializing in the polar regions. He has worked as a guide and expedition leader in Greenland, Norway, Svalbard, Antarctica, Uganda, and South Africa. In 2018, Jonas won awards in the National Geographic photo contest and for the best nature photo in Denmark. With a deep love for wildlife, he engages in captivating experiences like swimming with killer whales, hiking among musk oxen, and seeking out polar bears.

Guest Photographers

Alongside our Secret Atlas expedition team of 5 wildlife guides we also have our guest photographers.



CHASE TERON

Canadian environmentalist Chase Teron is a professional wildlife and nature photographer who has worked with major international clientele for his photography and drone work. For the past decade, Chase has continued to expand his expertise in photography as well as prime his knowledge on all things artistic theory in the field and in post-processing.



JENNI TERON

Jenni Teron is an artist and photographer with a deep love of nature. Her work has been featured in major commercial campaigns for international brands such as Canon, Arc'teryx, Aquatica and she regularly donates her imagery to fundraising efforts for nature conservation.

[Read More](#)

HANNES BECKER

Hannes is a photographer specialised in the adventure and landscape niche. He is inspired by the north and drawn to the remoteness faraway. To inspire the viewer and showcase his experiences in a realistic manner, he does not only document his travels, but makes part of his personal interpretation come to life within his photographs, by emphasising composition and lighting



FRAUKE HAMEISTER

Frauke is a professional adventure and travel photographer and creative freelancer passionate about capturing the big and small moments of the world around her. Both behind and in front of the camera, she specializes in adventure travel with a strong focus on storytelling and lifestyle imagery.

[Read More](#)

Dates and Prices

Prices quoted are per person. Twin and double cabins are based on double occupancy.

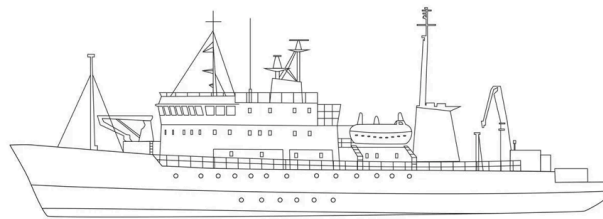
Download Brochure

24th February – 9th March 2024

Cabin Type	Persons per Cabin	Price per person
Triple Cabin with Shared Facilities	3	US\$ 13,995
Twin Cabin with Shared Facilities	2	US\$ 15,795
Twin Cabin with Private Facilities	2	US\$ 16,995
Mini Suite	2	US\$ 17,995
Captain's Suite	2	US\$ 18,995

Your Vessel

MV Polar Pioneer



Step aboard the legendary **MV Polar Pioneer**, a true polar expedition ship

MV Polar Pioneer needs no introduction. She is a veteran expedition ship with a proven track record exploring the polar regions. She returns in 2022 with a full refurbishment.

We love her because she was built for research in the polar regions before being converted into an expedition ship for polar cruises, she is 1-A Ice Class, very strong and capable to explore icy waters.

She takes just 48 passengers offering the lowest group size in Antarctica and South Georgia, her large deck space with raised areas makes her perfect for observation and photography.

There is accommodation for 48 guests across twins, triple cabins and suites, she features a large passenger saloon with bar, and an onboard sauna to warm up in after a day in the cold,

She is crewed by a **team of experts** with decades of experience navigating polar waters, and is the ideal ship for guests looking to go on a real expedition with an authentic expedition vessel.

She is equipped with Zodiacs that can accommodate all guests for shore landings and exploring. See her in action [here](#).

The Polar Pioneer can transit open water crossings with ease and comfort due to its integrated dynamic water ballast system, which guarantees a great reduction of rolling in heavy seas.

As a result, Polar Pioneer is among one of the most stable vessels currently in operations in the Polar regions.



- Capable expedition vessel with highest ice class gives the best chance of reaching the sea ice edge
- Small group size of 48 guests ensures an intimate experience
- Large passenger saloon with bar
- Newly refurbished to a high standard with warm, comfortable cabins
- Sauna

- Equipped with 5 x zodiacs for shore landings. All guests can fit in the Zodiacs together so no waiting to go ashore.
- Large open deck space and raised areas for photography
- Expert team of crew and guides
- Boots provided for shore landings

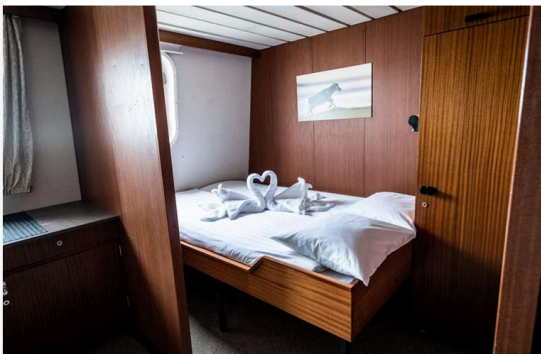
Cabins



Captain's Suite - Type A

- For 2 Guests
- Double bed
- Ensuite shower and toilet
- Lounge area with sofa
- Located on deck 5
- Windows
- Corner desk & chair
- Wardrobe
- Cabins 501
- 22.5 m2





Mini Suite -Type B

- For 2 Guests
- Double bed
- Ensuite shower and toilet
- Lounge area with sofa
- Located on deck 5
- Windows
- Corner desk & chair
- Wardrobe
- Cabins 502 & 503
- 16.8 m2



Twin with Private Facilities - Type C

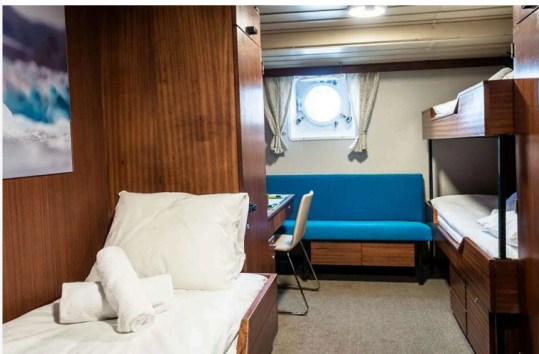
- For 2 guests
- 2 Lower twin beds
- Ensuite shower and toilet
- 9.8 m²
- Located on deck 4 & 5
- Window
- Wardrobe
- Cabins 504 - 507, 400-401, 404 - 408



Twin with Shared Facilities - Type D

- For 2 guests
- 2 Lower twin beds
- Sink in room
- 9.8 m²
- Located on deck 3
- Porthole
- Wardrobe
- Cabins 302 - 310

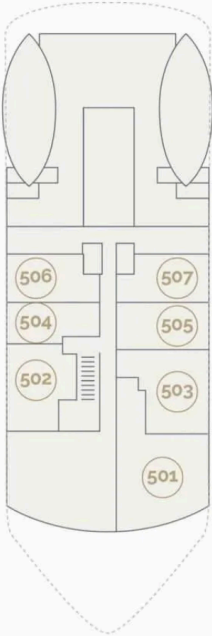




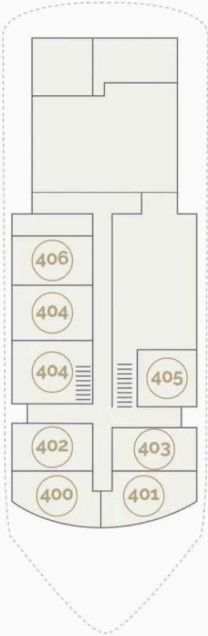
Triple with Shared Facilities - Type E

- For up to 3 guests
- 2 Lower twin beds and 1 bunk bed
- Sink in room
- 10.2 m²
- Located on deck 3
- Porthole
- Wardrobe
- Cabins 300 & 301

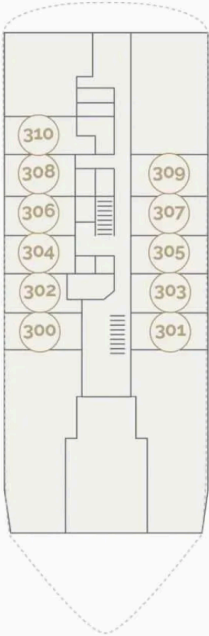
Deck Plan



DECK 5



DECK 4



DECK 3

^ What is Included / Not Included

DEPARTURE LOCATION	Port Stanley, Falkland Islands
ARRIVAL LOCATION	Port Stanley, Falkland Islands
TRIP STYLE	Exploration
PHYSICAL RATING	Easy
MAXIMUM GROUP SIZE	48
ACCOMMODATION	Twin Cabins, Triple and Suites
DURATION	15 Days
TIME OF YEAR	February
INCLUDED	✔ Expert South Georgia Guiding Team ✔ Lectures on South Georgia ✔ Use of Zodiac (Dinghies) for shore landings and photography opportunities ✔ Full Board (breakfast, lunch and dinner) ✔ Bedding and towels ✔ Highly experienced Captain and Cook ✔ Rubber boots for shore landings ✔ Transfers from Mount Pleasant Airport to ship for embarkation + vessel to airport/hotel after disembarkation
NOT INCLUDED	International Flights Travel and cancellation insurance Any additional expenses such as museum entry Alcohol and spirits

^ Payment Options & Information

We offer payment via the following methods:

- Credit card
- Payment by bank transfer

Please let us know at the time of booking your preferred method.

You have the option to pay in full at time of booking or pay in the following instalments:

30% deposit is taken at the time of booking

30% 6 months before departure

40% 90 days prior to departure

It is mandatory you take out comprehensive [travel insurance](#) at the time of booking that also covers cancellation.

POLAR ADVENTURES

Schiffs- und Flug- Expeditionen
in Arktis und Antarktis

OFFLINE-KATALOG-ANFORDERUNG

Sehr geehrte Reise-Interessenten. Vielen Dank für Ihr Interesse und den Download eines digitalen Kataloges im PDF-Format.

Gerne senden wir Ihnen zusätzlich bei weitergehendem Interesse die ausgewählten PDF-Inhalte als gedruckte Version auf dem Postweg.

Bitte nennen Sie unten den gewünschten Katalog und senden Sie dieses Formular per Post oder Fax an uns zurück.

Bitte senden Sie mir den aktuellen Katalog für folgendes Schiff/ Tour:

--

Bitte senden Sie den ausgewählten Katalog an folgende Adresse:

Vorname + Name

Telefonnummer

--	--

Strasse + Nr.

Faxnummer

--	--

PLZ + Wohnort

e-mail-Adresse

--	--

Bitte per Post an:

oder per Fax an 04131-54255

an POLARADVENTURES Schiffs- und Flug-Expeditionen in Arktis und Antarktis Heinrich-Böll-Str. 40 D-21335 Lüneburg
--

POLARADVENTURES Schiffs- und Flug-Expeditionen in Arktis und Antarktis
Reiseagentur * Heinrich-Böll-Str. 40 * D-21335 Lüneburg * Deutschland

Tel +49-4131- 223474 Fax +49-4131-54255 infos@polaradventures.de www.polaradventures.de