

# POLAR ADVENTURES

Schiffs- und Flug- Expeditionen  
in Arktis und Antarktis



**Arktis Expeditions-**

**Seereisen**

**MV EXPLORER**

**MV POLARFRONT**

**MV VIRGO**

**POLARADVENTURES Schiffs- und Flug-Expeditionen in Arktis und Antarktis**

**Reiseagentur Heinrich-Böll-Str. 40 \* D-21335 Lüneburg \* Deutschland**

**Tel +49-4131- 223474 Fax +49-4131-54255 [infos@polaradventures.de](mailto:infos@polaradventures.de) [www.polaradventures.de](http://www.polaradventures.de)**

**POLAR ADVENTURES**

Schiffs- und Flug- Expeditionen  
in Arktis und Antarktis

# Saison 2025 & 26

**Reederei Direkt-Angebote**

**ab-bis Hafen für individuelle  
Planungen**

**alle Abfahrten der Saison inkl.  
englischsprachiger Termine**





**WATERPROOF<sup>®</sup>**  
**EXPEDITIONS**

# **SVALBARD 2025**

## **NATURE & WILDLIFE**



**SIGNATURE EXPEDITIONS**





Dear guest,

Our **Waterproof Signature Expeditions** are carefully designed voyages with unique features. These small-group expeditions take place on luxury polar yachts, guided by our own team of experts. The flexibility of a small expedition yacht makes it possible to optimise every opportunity to show you the best of the Arctic. We intend to reach places far removed from where most large vessels are sailing. Accompanied by experts and a small group of like-minded guests, you will uncover the fascinating wilderness of the Arctic.

We will alter our plans to take advantage of (day)light, weather, wildlife sightings and other opportunities which may vary from day to day. Bring a good portion of adventurous spirit and be prepared for cold but rewarding days out at sea. The combination of wildlife, beautiful scenery and a comfortable expedition ship, creates an unforgettable experience. This is true expedition style travel!

**Marlynda Elstgeest**  
CEO & Owner







# SVALBARD NATURE & WILDLIFE PHOTOGRAPHY

---

SIGNATURE EXPEDITION

**EMBARKATION:** LONGYEARBYEN, SVALBARD | **DURATION:** 10-12 DAYS | **SHIP:** EXPLORER

Our Signature Expeditions in Svalbard take you on an **in-depth wildlife expedition**. With a small group of only 12 guests, it's a unique and personal experience. Your expedition leader Rinie van Meurs has over 30 years of experience in the Arctic, and a wealth of knowledge that he enthusiastically shares with his guests. During lectures on board, Rinie and Szymon will tell you all about the animals, natural environment and history of Svalbard.

The long summer days offer plenty of time to explore the beautiful nature and polar animals of Svalbard. With two expert guides and two zodiacs on board, all guests can do landings at the same time. Our main priority will be **looking for polar bears** and other wildlife, and we pay extra attention to photography. Depending on the weather and ice conditions, we might attempt to reach the edge of the pack ice in the north, one of our favorite places to spot polar bears.

Our voyages are especially designed to experience the Arctic in a way that respects our fragile polar environment. We will never approach or follow the polar bears. Instead, we wait for the animals to come to us for the most authentic experience. In addition to bears, we expect to encounter a **wide variety of arctic wildlife** including walrus, whales, reindeer, arctic foxes and many species of birds.

By travelling on board a small expedition yacht with only 12 guests, we can offer you a rich and in-depth experience. We will take advantage of light and other one-of-a-kind opportunities which can vary from day to day. This is an expedition in the true sense of the word!





# EXAMPLE ITINERARY

## SVALBARD EXPEDITION CRUISE

There is no fixed route for this itinerary. The ice conditions and wildlife behaviour will determine our plans. The success of this trip is based on realistic expectations and your personal flexibility.

### Arrival & boarding

Your Svalbard voyage starts in Longyearbyen, where the expedition yacht is ready to welcome you in port. Boarding takes place late in the afternoon. You will have some time to get comfortable and meet the crew and your fellow guests. Departing from Longyearbyen, the ship will sail through Isfjorden, the gateway to the west coast of Svalbard. Almost the full spectrum of Svalbard's history, geology and biology can be found in this area.

Your expedition guides will determine the course of this voyage, always on the lookout for polar animals. Some days will be spent watching wildlife from the ship, while other days you might go on zodiac cruises or landings ashore.

### Places we might visit:

#### Kongsfjorden

The pyramidal peaks of the majestic Tre Kroner mountains overlook Kongsfjorden, an inlet comprising several cultural-heritage sites. From gigantic calving icebergs to bird colonies, and research stations, Kongsfjorden offers a unique array of riches. To top it off, you'll likely cross paths with a few reindeer and arctic foxes!

#### Prins Karls Forland & Poolepynten

A unique location we could visit is Poolepynten, a 1.5 kilometer long headland on the eastern coast of the island Prins Karls Forland. This location is a popular walrus haulout, making it a good place to admire them from close range. It's a spectacular sight to see these huge animals in their natural environment.



© J. Varley





### **Krossfjorden & Magdalenefjorden**

Krossfjorden offers a magnificent summary of Spitsbergen: glaciers falling into the sea (including the majestic Lillihook glacier front), snow-covered tundra, and historical sites. We might also enter Magdalenefjorden, an impressive setting of majestic mountains and glaciers, with scree slopes that are home to thousands of birds. The extended graveyard and remains of blubber ovens set in the Gravneset Peninsula bear testimony to the many whalers who used to find shelter in the fjord. Nowadays, the land welcomes a growing number of walruses.

### **Smeerenburgfjorden**

Once home to a busy whaling station and a starting point for major Arctic expeditions, this legendary fjord where glaciers form a spectacular ice front against the sea, has now been claimed by wildlife. Walruses and seals are a likely sight, and bears might wander about the slopes of steep, rugged mountains. Take out your binoculars to have a look at the impressive little auk colonies that can be found here.

### **The ice edge**

We hope to reach the edge of the pack ice. This is as far north as we can sail. From this point onwards, there is only ice all the way up to the north pole. Depending on the circumstances, we might navigate along the ice for some distance, in order to capture the unique feeling of being at the end of the world. If we are lucky, we might spot some bears here.



© Szymon Niezabitowski

### **Monacobreen**

The impressive Monacobreen is a glacier reaching down into Liefdefjorden. The landscapes and icebergs provide some of the most spectacular views in the whole archipelago.

### **Wijdefjorden**

Ice permitting, we'll navigate through Wijdefjorden and catch a glimpse of its highest peaks and former trapper stations.

### **Hinlopen Strait and Murchisonfjorden**

We might sail to Murchisonfjorden, a fjord on the western side of Nordaustland, in the northern part of Hinlopen Strait. It has many small islands, desert-like landscapes and some unique historical sites. One of the largest and most remarkable bird colonies on the archipelago is nestled among the steep cliffs made up of dark basaltic rock and bright limestone. Ice permitting, we'll resume our search for polar bears as we continue northeast.

On our longer voyages, we might attempt a circumnavigation of Svalbard, offering you a chance to explore the eastern and southern parts of the archipelago. However, when the pack ice prevents us from navigating further east, we will travel back via the north and west coast while keeping an eye out for wildlife.

### **End of your voyage - Longyearbyen**

You'll disembark in Longyearbyen. This is the end of your Waterproof Expedition, and we wish you a pleasant journey home.

# YOUR GUIDES

---

## POLAR EXPERTS

### EXPEDITION LEADER: RINIE VAN MEURS

You will be accompanied on your journey by expert photographer and expedition leader Rinie van Meurs. He is the only person who spent 31 consecutive years as an expedition leader in Svalbard, and logged more than 250 cruises in Svalbard only! He has been fortunate to photograph and study many Polar Bears in the Arctic and has become passionate about these magnificent animals as well as other Arctic wildlife. He developed a broad interest in the entire sea ice ecosystem and marine life which resulted in his book 'The Future Polar Bear: The impact of the vanishing sea ice on an Arctic ecosystem'. Rinie will show you the most beautiful places in Svalbard and gives expert advice on photography in this unique environment.

**Rinie:** *"The vast wilderness and the animals are the main reasons why I keep coming back to the Arctic. I look at the weather forecast, ice charts, locations of other ships, and take into account my experiences from previous trips to make a plan. It's my goal to provide guests with as many spectacular sightings as possible, without disturbing the wildlife. I myself have been an avid photographer for 40 years. I take the light into account and inform my guests in advance about what (not) to do during a 'close' encounter with a Polar Bear in the pack ice to maintain the encounter for as long as possible."*

### EXPEDITION GUIDE: SZYMON NIEZABITOWSKI

Szymon was born in Cracow, Poland, where he studied Biology and Geography and received a graduate degree in Faculty of Biology and Earth Sciences. After he finished his studies he worked for the Institute of Systematics and Evolution of Animals. From the earliest years of his life he has been a passionate naturalist and mountaineer with a special interest in the geography and the wildlife of the higher latitudes. In the summer of 2018 Szymon fulfilled his biggest dream and became a circumpolar guide, spending almost half a year on Spitsbergen, where he could admire the true wildness of the Arctic. This was the start of his career as an expedition guide on board ships in the polar regions and Northern Norway on the 'Winter Whales of Norway' trips with Waterproof Expeditions.

**Szymon:** *"The majority of our polar bear encounters are in the sea ice, the most beautiful place to meet them. We travel on board a specific ship that has the capability to go into that environment. Strong, but also small, with outside decks close to the water in order to photograph the Polar Bears at a good angle. We have no fixed itinerary and might stay in the same area for several days, at one with the environment. This increases our chances of seeing wildlife dramatically compared to standard expeditions on larger ships."*





# DATES & RATES SVALBARD 2025

On board Explorer - 12 guests

	Single Cabin	Single Deluxe	Superior Suite	Executive Suite
<b>19 June - 28 June</b> (10 days / 09 nights)	€ 12.600 pp	€ 13.100 pp	€ 12.600 pp	€ 13.900 pp
<b>28 June - 13 July</b> (16 days / 15 nights)	waitlist	waitlist	waitlist	waitlist
<b>13 July - 24 July</b> (12 days / 11 nights)	€ 15.300	€ 15.800	€ 15.500 pp	€ 16.500 pp

All prices are per person, based on full occupancy and depending on availability. If you prefer a double cabin for single use, please note that a single supplement is applicable.

## Included in your voyage:

- Accommodation on board
- Breakfast, lunch & dinner
  - Starts with dinner on the first night, ends after breakfast on the last day
- Coffee, tea & water throughout the day
- Warm zodiac suits and boots
- Use of sauna & hot tub
- Lectures by the experienced guides
- All service taxes and port fees

## Not included:

- Flights & transfers
- All items of a personal nature such as laundry, bar drinks, etc.
- Gratuities for ships crew and expedition staff
- Pre and post voyage excursions and hotel.

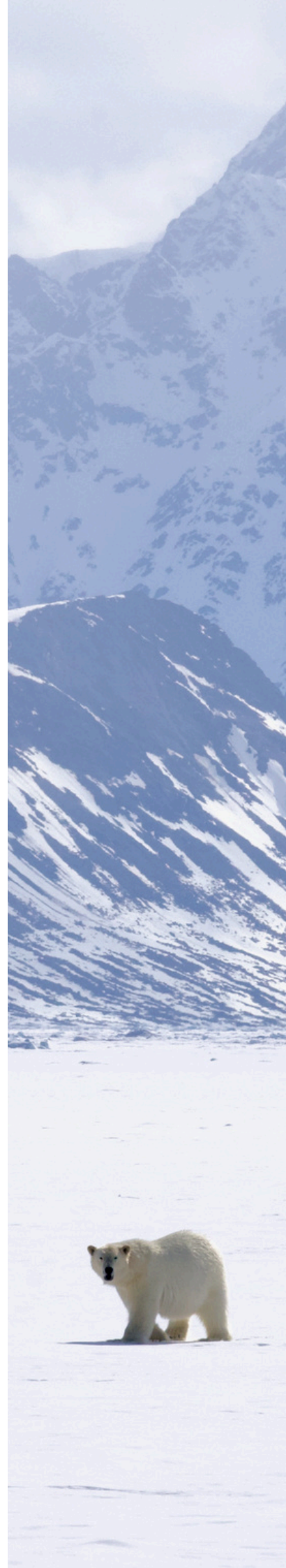
## Insurances:

Travel Insurance with worldwide medical evacuation coverage is mandatory. We also strongly recommend you take out a trip cancellation insurance. This will cover your cancellation costs in case you need to cancel your trip after you confirmed your booking.

# PAYMENTS

If you are interested in signing up, please inform us by e-mail. We require a 30% deposit to confirm your booking. Once we have received your deposit, your place onboard is guaranteed. The final payment is due 3 months prior to departure.

We accepts payments via bank transfer or by credit card (Visa, Mastercard or American Express). The bank information and payment details will be provided on the invoice. If you prefer to pay by credit card, we will send you a secure credit card payment request via e-mail. Please note, a 4% fee for credit card payments is applicable.





# MEET OUR EXPEDITION SHIP

---

WELCOME ON BOARD







# EXPLORER

EXPEDITION CRUISING  
WITHOUT COMPROMISING  
ON COMFORT

CAPACITY: 12 PASSENGERS | CABINS: 9 | DECKS: 4 | REFURBISHED: 2021 | LENGTH: 46M

Polar yacht Explorer was originally built in 1994 as an oceanographic research vessel. It has been renovated to reduce its impact on the environment and the interior has been completely redesigned. The refurbished polar yacht now offers the most refined and high-end small ship cruising experience in the Arctic.



The multiple level observation decks offer plenty of opportunities for photography, or you can choose to spend some time on the bridge scanning the horizon for wildlife. The spacious panoramic lounge has comfortable seating areas where you can relax and attend our guides' lectures. The gym, sauna, and jacuzzi are available for you to unwind after a long day of exploring. On the upper deck: 2 Single cabins and 2 comfortable Executive Suites with floor-to-ceiling windows, double beds and direct access to the deck. On the lower deck you find 2 Superior Suites, and 3 Deluxe Suites for single travellers. Each room has windows or portholes. With **only 12 guests** on board, it feels like you are on a private luxury expedition!





# ACCOMMODATION



## EXPLORER - 12 GUESTS



### EXECUTIVE SUITE

- Spacious suite
- Double bed
- Luxury bathroom with walk-in shower
- Desk with chair
- Floor to ceiling window
- Situated on the upper deck
- Direct access to outside deck



### SUPERIOR SUITE

- Comfortable suites
- Double bed or twin beds
- Luxury bathroom with walk-in shower
- Desk with chair
- Porthole windows
- Situated on the lower deck



### SINGLE DELUXE SUITE

- For single travellers
- Comfortable suite for private use
- Double or twin beds
- Luxury bathroom with walk-in shower
- Porthole windows
- Situated on the lower deck



### SINGLE CABIN

- Comfortable cabin for single travellers
- Single bed
- Bathroom with shower
- Desk with chair
- Picture window
- Situated on the upper deck





 **WATERPROOF®**  
EXPEDITIONS





**WATERPROOF®**  
EXPEDITIONS

# **SVALBARD 2025**

**ON LAND & IN THE WATER**



**SIGNATURE EXPEDITION**





## DISCOVER THE WORLD OF WATERPROOF

Dear guest,

Our **Waterproof Signature Expeditions** are carefully designed voyages with unique features. These small-group expeditions take place on luxury polar yachts, guided by our own team of experts. The flexibility of a small expedition yacht makes it possible to optimise every opportunity to show you the best of the Arctic. We intend to reach places far removed from where most large vessels are sailing.

Accompanied by experts and a small group of like-minded guests, you will uncover the fascinating wilderness of the Arctic. We will alter our plans to take advantage of (day)light, weather, wildlife sightings and other opportunities which may vary from day to day.

Bring a good portion of adventurous spirit and be prepared for cold but rewarding days out at sea. The combination of wildlife, beautiful scenery and a comfortable expedition ship, creates an unforgettable experience. This is true expedition style travel!

Marlynda Elstgeest  
CEO & Owner







# SVALBARD ON LAND & IN THE WATER

## WATERPROOF SIGNATURE EXPEDITION

**Dates:** 22-31 July 2025 (10 days) | **Embarkation:** Longyearbyen | **Ship:** Polarfront | **Including activities!**

Our new 10-day **Svalbard Expedition** on board **Polarfront** offers you a unique and personal experience, unlike any other! With a small group of only 16 guests, we will not only explore Svalbard by sailing along the magnificent coastline, but through immersive activities on land and in the water.

Waterproof Experts **Johnny van Vliet** and **Debbie Bouma** will be your expedition guides on this exciting voyage. Using their knowledge of the Arctic, they will bring you to places where we have the best chances of finding wildlife, away from where most other vessels are sailing. We expect to encounter a wide variety of polar animals including walrus, reindeer, arctic foxes, many species of birds and possibly whales and polar bears. Using our two zodiacs, all guests can join landings at once, maximising your time ashore. A great advantage over larger ships!

In July, the midnight sun offers us plenty of time to explore the beautiful nature of Svalbard in a fun and active way. Weather and ice conditions permitting, we hope to offer you a chance for **snorkeling** in the cold Arctic waters, something only a handful of people have ever done! We will also plan **zodiac cruises** and **hikes** ashore, and you might even be able to take a ride on our special **pedal boat**. During lectures on board, you will learn all about the polar animals, their natural environment and the history of Svalbard.

With spacious cabins, a panoramic sauna and hot tub on deck, our small expedition yacht Polarfront provides a rich experience. In addition to optimising the onboard comfort, Polarfront is currently being renovated to reduce its emissions and reach the highest standards of environmental protection. This allows you to enjoy the most refined voyage in the Arctic in a safe and responsible way.





# EXAMPLE ITINERARY

## SVALBARD EXPEDITION CRUISE

There is no fixed route for our voyage. The ice conditions, weather and wildlife will determine our plans. Activities will be offered when the elements are in our favour. This is an expedition in the true sense of the word, we count on your realistic expectations and flexibility.

### DAY 1 | Arrival & boarding

Your Svalbard Expedition starts in Longyearbyen, where Polarfront will be ready to welcome you on board. Boarding takes place late in the afternoon. You will have some time to get comfortable and meet the crew and your fellow guests. Departing from Longyearbyen, the ship will sail through Isfjorden, the gateway to the west coast of Svalbard. Almost the full spectrum of Svalbard's history, geology and biology can be found in this area. You will see wide coastal plains, steep glaciers and the characteristic plateau-shaped mountains that are so unique to Svalbard.

Your expedition guides will determine the course of this voyage, always on the lookout for polar animals. Some days might be spent watching wildlife from the ship, while other days you could go on zodiac cruises, shore landings and other off-ship activities.

### DAY 2-9 | Exploring Svalbard

Places we might visit during our expedition:

#### Kongsfjorden

The pyramidal peaks of the majestic Tre Kroner mountains overlook Kongsfjorden, an inlet comprising several cultural-heritage sites. From gigantic calving icebergs to bird colonies, and research stations, Kongsfjorden offers a unique array of riches. To top it off, you'll likely cross paths with a few reindeer and arctic foxes!

#### Prins Karls Forland & Poolepynten

A unique location we could visit is Poolepynten, a 1.5 kilometer long headland on the eastern coast of the island Prins Karls Forland. This location is a popular walrus haulout, making it a good place to admire them from close range. It's a spectacular sight to see these huge animals in their natural environment.





### **Krossfjorden & Magdalenefjorden**

Krossfjorden offers a magnificent summary of Spitsbergen: glaciers falling into the sea (including the majestic Lillihook glacier front), snow-covered tundra, and historical sites. We might also enter Magdalenefjorden, an impressive setting of majestic mountains and glaciers, with scree slopes that are home to thousands of birds. The extended graveyard and remains of blubber ovens set in the Gravneset Peninsula bear testimony to the many whalers who used to find shelter in the fjord. Nowadays, the land welcomes a growing number of walruses.

### **Smeerenburgfjorden**

Once home to a busy whaling station and a starting point for major Arctic expeditions, this legendary fjord where glaciers form a spectacular ice front against the sea, has now been claimed by wildlife. Walruses and seals are a likely sight, and bears might wander about the slopes of steep, rugged mountains. Take out your binoculars to have a look at the impressive little auk colonies that can be found here.

### **The ice edge**

We hope to reach the edge of the pack ice. This is as far north as we can sail. From this point onwards there is only ice all the way up to the north pole. Depending on the circumstances, we might navigate into the ice for some distance, in order to capture the unique feeling of being on the end of the world. If we are lucky, we might spot some bears here.



### **Monacobreen**

The impressive Monacobreen is a glacier reaching down into Liefdefjorden. The landscapes and icebergs provide some of the most spectacular views in the whole archipelago.

### **Wijdefjorden**

Ice permitting, we'll navigate through Wijdefjorden and catch a glimpse of its highest peaks and former trapper stations.

### **Hinlopen Strait and Murchisonfjorden**

We might sail to Murchisonfjorden, a fjord on the western side of Nordaustland, in the northern part of Hinlopen Strait. It has many small islands, desert-like landscapes and some unique historical sites. One of the largest and most remarkable bird colonies on the archipelago is nestled among the steep cliffs made up of dark basaltic rock and bright limestone. Ice permitting, we'll resume our search for polar bears as we continue northeast.

When the pack ice prevents us from navigating further east, we will travel back the way we came, this time visiting different locations than on our way north.

### **DAY 10 | End of your voyage - Longyearbyen**

You'll disembark in Longyearbyen. This is the end of your Waterproof Expedition, and we wish you a pleasant journey home.



# YOUR GUIDES



## POLAR EXPERTS

### EXPEDITION LEADER: JOHNNY VAN VLIET

Johnny is a passionate ecologist from the Netherlands. His love for nature and wildlife has led him to a unique career path as an Expedition Leader & Guide in the polar regions. Combining his expertise in ecology with his adventurous spirit, he thrives in the remote and icy landscapes. Whether it's through climbing a mountain, navigating the Arctic waters in a zodiac, or during lectures on board, Johnny loves to share his knowledge about animals, landscapes, and the profound impact of human activity on the environment.

Driven by a deep commitment to wildlife conservation, Johnny utilizes his talents in photography to shed light on the importance of protecting our planet's fauna. His photography serves as a powerful tool to raise awareness and inspire action. His journey took an exciting turn when he brought his Wildlife-Conservation photography onboard expedition ships, allowing him to share his passion with fellow adventurers from around the globe.

Johnny's dedication and talent haven't gone unnoticed. Recently, he was honored as one of the finalists in The Nature Conservancy's prestigious 2023 Global Photo Contest. His remarkable work continues to inspire others to appreciate, cherish, and protect our planet's natural wonders.

**Johnny:** *"Let's explore the world. Follow a chart to its edges, and keep going. Forget the plans. Trust our instincts. Let curiosity be our guide."*

### EXPEDITION GUIDE: DEBBIE BOUMA

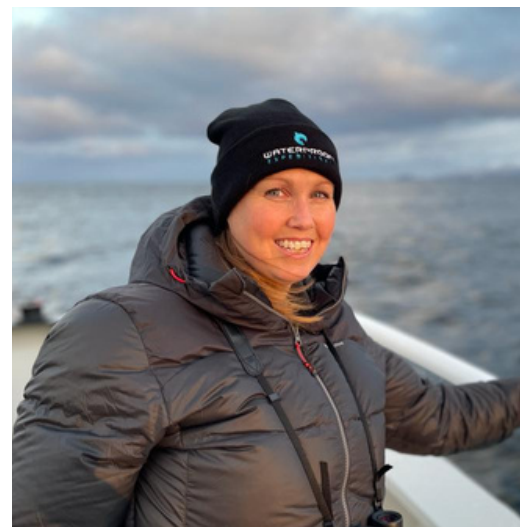
Debbie Bouma is a passionate zoologist with over a decade of experience working with various marine mammals, like Dolphins, Seals and Walrus. Her journey into the world of wildlife began from a young age, where she found her calling studying and understanding the intricacies of marine life, specializing in animal welfare, research and behavior.

Driven by her love for animals and a deep-rooted desire to share her passion with others, Debbie started her career as an expedition guide. Combining her expertise in zoology with her love for travel, she enthusiastically takes guests to experience the wonders of our polar regions up close.

Debbie's commitment to wildlife conservation and education shines through in every aspect of her work. Whether leading expeditions to remote corners of the globe, lecturing about animal behavior or capturing breathtaking moments through her lens, she aims to foster a deeper connection between people and nature.

With a keen eye for photography and an unwavering dedication to conservation, Debbie Bouma continues to inspire others to appreciate and protect the beauty of our planet's wildlife.

**Debbie:** *"I will always prioritise the animals and their behavior. We are visitors in their home, and I will always respect that."*







# ACTIVITIES

## INCLUDED IN YOUR EXPEDITION

### ZODIAC CRUISING



During this expedition cruise we will try to spend as much time out exploring as possible. Zodiacs are used for transferring you ashore and for taking you ocean-level cruising in the fjords and along glacier fronts. With our two zodiacs, all 16 passengers will be able to join the outings at the same time.

### POLAR SNORKELING



Weather and wildlife permitting, we hope to go snorkeling at least once. Only a few people have ever witnessed the interesting under water world of Svalbard. You might see sea-snails, crabs, and various Arctic fish. If very lucky, you might also spot marine mammals! We will provide you with high quality Waterproof gear.

### HIKES & WALKS



Shore hikes are a great way to explore the nature and landscape from up close. Our walks can vary in length and might take you over spongy tundra, crusty snow, sandy beaches or to the top of lookouts. We aim to offer plenty of time for photography, learning moments, or just time to stand back and enjoy the incredible surroundings.

### PEDAL BOAT



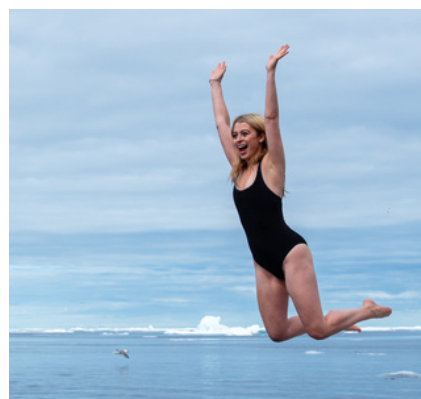
On board Polarfront we have a very unique piece of nautical equipment, a pedal boat! If the weather and wildlife conditions allow, you will have a chance to take this special type of water bike for a tranquil ride on the ocean.

### PHOTOGRAPHY



This expedition is perfect for photographers who want quality time in the Arctic. You will enjoy long days with plenty of daylight. Our expert guides are happy to share their knowledge about photography in this unique environment in order for you to improve your skills.

### POLAR PLUNGE



Depending on the weather, we will also offer a Polar Plunge, a chilling jump into the cold Arctic water! Not many people can say they swam in the sea above the Arctic circle, a once in a lifetime opportunity! Afterwards, simply hop in the sauna or take a warm bath in the hot tub to heat up.

*We do our utmost to offer all guests a chance to participate in our activities, but have no control of the weather, ice or wildlife.*





# ARCTIC WILDLIFE

WE HOPE TO ENCOUNTER





# MEET OUR EXPEDITION SHIP

---

WELCOME ON BOARD





Refit planned  
in 2024



# POLARFRONT

## OUR SPACIOUS BOUTIQUE-STYLE POLAR YACHT

CAPACITY: 16 PASSENGERS | CABINS: 8 | DECKS: 3 | REFURBISHED: 2018 | LENGTH: 55M

MS Polarfront is a luxurious expedition vessel that is sturdy enough to bring you to destinations high up in the Arctic. The world's last weather ship, Polarfront was built to face rough seas and harsh weather conditions. After her years as a weather ship, MS Polarfront has started a second life as an arctic expedition cruise vessel.



The ship was nicely refurbished in 2018 and had another important upgrade in January 2024. Polarfront offers a luxurious and high-end experience for its' 16 passengers. All 8 twin suites are on the lower deck and have at least 2 porthole windows. The suites are very spacious and each has their own comfortable bathroom with shower. You'll also find a hair dryer, bathrobes and amenities in your room.

Polarfront has a large outside deck space at the front of the ship as well as on the back, ideal for photography. On the aft deck you will also find a panoramic sauna and hottub to warm up after a long cold day out on the arctic seas, a great way to unwind and enjoy the scenery in a relaxing way. Inside, there's a comfortable salon, dining area, library and fitness room. There are 2 zodiacs and a unique pedalboat for immersive excursions close to nature.







## THE FUTURE OF POLAR TRAVEL

### Propulsion & power production retrofit 2024

Polarfront is an exceptional ship. She has been maintained with substantial resources throughout her long career and recent surveys reveal that the structure is in excellent condition. In an ongoing effort to limit the environmental impact, state of the art technologies will be retrofitted to replace the propulsion and power systems, to reduce the ship's fuel consumption, and to improve safety of navigation as well as comfort on board.

From the propeller to the controls on the bridge, in January 2024, all systems will be renewed:

- Electric propulsion with 2 motors
- High efficiency propeller
- Generators with exhaust reduction systems
- Electric shore connection
- High efficiency boiler
- Heat recovery system from the engines

### Comfort and Silence

The electric propulsion systems that will be implemented are extremely quiet. The propeller with 5 fixed blades is inspired by the ones used on submarines. In addition, all engines and their components will be mounted on 'silent blocks' to further prevent sounds and vibrations. These noise reductions will dramatically improve the comfort of guests on board. It will allow you to fully immerse yourself into the remote Arctic and take in all the views and sounds without the disturbance of engines and generators.

### Minimizing the environmental impact

All improvements combined are estimated to reduce fuel consumption by 35%. The CO2 savings are expected to be equivalent to the absorption of approximately 17,500 trees per year.

Since our objective is to explore the polar regions in the most sustainable way possible, reducing the noise impact has become one of our main concerns. Not only for guests on board, but especially for wildlife. It has been proven that marine mammals are very sensitive to noises transmitted by ships in the water.

### Fit for the future

After the retrofit, Polarfront will be outperforming other small expedition ships sailing in the Arctic, on many levels:

- ✓ Electric propulsion systems
- ✓ Fulfilling the highest standards on air pollution
- ✓ Safest propulsion plant
- ✓ Most silent under water
- ✓ Most stable
- ✓ Comfortable and spacious accommodation
- ✓ Largest area of open decks

Adding to this the warm atmosphere and service on board, Polarfront is an ideal expedition yacht for voyages to the high Arctic.





# ACCOMMODATION



16 GUESTS IN 8 SPACIOUS SUITES



## EXECUTIVE SUITE

- Very large suite with seating area
- Twin beds or double bed
- Large bathroom + separate toilet
- 3 closets and open shelves
- 4 porthole windows



## SUPERIOR SUITE

- Spacious suite
- Twin beds or double bed
- Private bathroom
- 2 or 3 porthole windows
- At least 2 closets for storage



## DELUXE SUITE

- Twin beds or double bed
- Private bathroom
- 2 or 3 porthole windows
- At least 2 closets for storage
- Situated in the front or middle the ship
- Suites #1 and #3 can be connected as a family room





# DATES & RATES

**Expedition Cruise Svalbard:** 22-31 July 2025 on board Polarfront

**Executive Suite** € 12.000 pp

**Superior Suite** € 10.900 pp

**Deluxe Suite** € 10.400 pp

*Prices are per person and depending on availability. We can offer shared twin cabins on request. If you prefer a double cabin for single use, please note that a single supplement is applicable.*

## Included in your voyage:

- 9 Nights accommodation on board
- Breakfast, lunch & dinner
  - Starts with dinner on the first night, ends after breakfast on the last day
- Coffee, tea & water throughout the day
- All activities as mentioned in the programme
- Warm zodiac suits and boots
- Lectures by the experienced guides
- All service taxes and port fees

## Not included:

- Flights, transfers & hotels
- All items of a personal nature such as laundry, bar drinks, meals ashore and phone charges
- Gratuities
- Insurance

## Insurance:

Travel Insurance with worldwide medical evacuation coverage is mandatory. We also strongly recommend you take out a trip cancellation insurance. This will cover your costs in case you need to cancel your trip after you've confirmed your booking.

---

# PAYMENTS

If you are interested in signing up, please inform us by e-mail. We will then send you our option booking form. After completing this form, you will receive an invoice. We require a 30% deposit to confirm your booking. Once we have received your deposit, your reservation is confirmed and your place onboard guaranteed. The final payment is due 3 months prior to departure.

We accept payments via bank transfer or by credit card (Visa, Mastercard or American Express). When paying via bank wire transfer, please make sure to include all bank charges for both sending and receiving banks. The bank information and payment details will be provided on the invoice.

If you prefer to pay by credit card, we will send you a secure credit card payment request via e-mail. Please note that we charge a 4% fee for credit card payments.





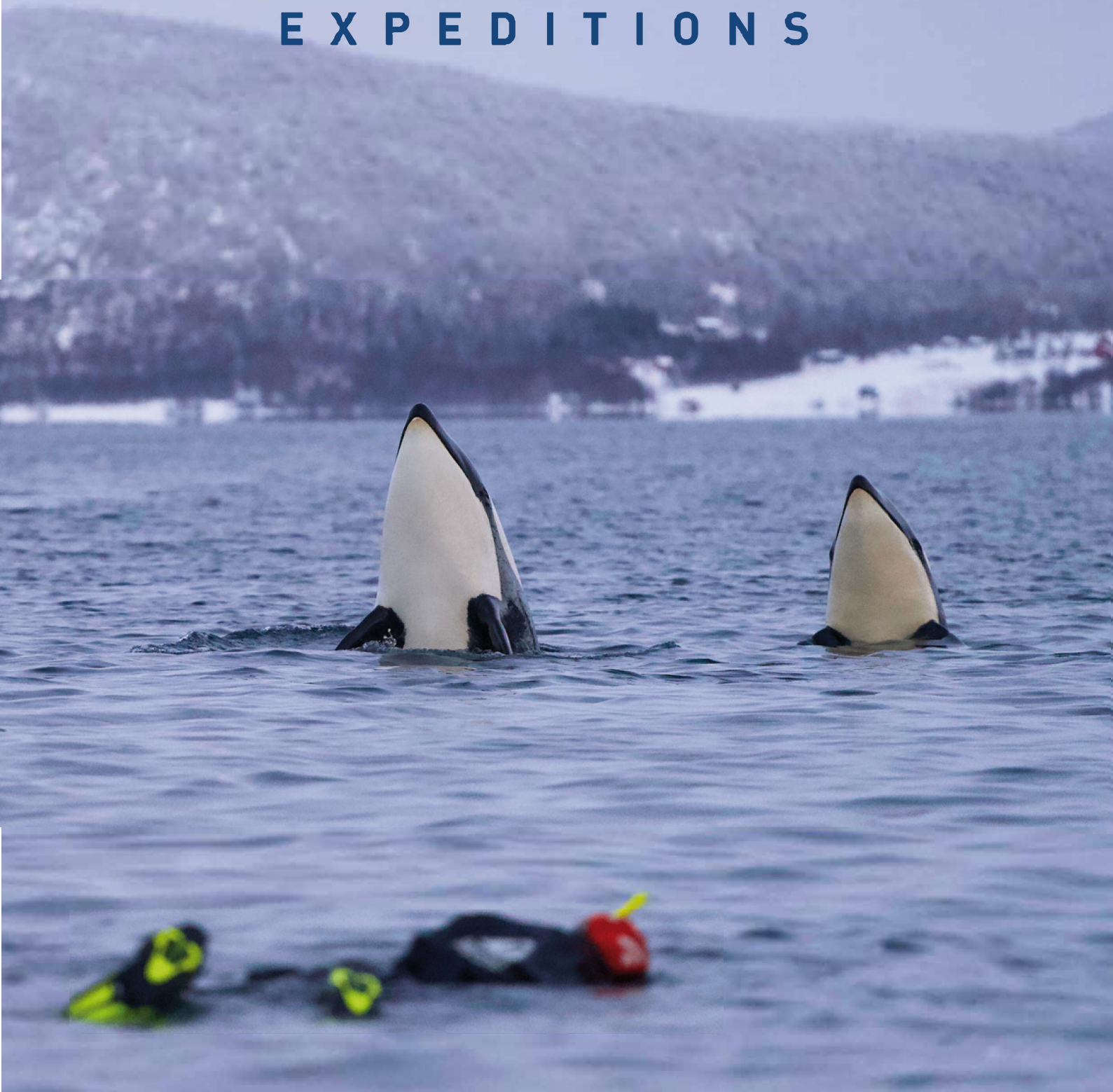
# **WATERPROOF®** EXPEDITIONS







# **WATERPROOF<sup>®</sup>** **EXPEDITIONS**



**WINTER WHALES OF NORWAY**  
**2024 & 2025**





# SNORKELING WITH ORCAS & WHALES

---

DISCOVER THE WORLD OF  
WATERPROOF!

Dear Explorer,

It has been over 20 years since I operated my first expedition and many have followed since. Organising trips to the polar regions is a fascinating and challenging undertaking. Every voyage is designed around wildlife experiences and sceneries that makes your heart skip a beat.

During the winter months, we operate our **"Winter Whales of Norway"** expeditions in Northern Norway. A unique experience for anyone interested in orcas, whales, white-tailed eagles, Arctic winter, northern lights and breathtaking landscapes.

Travelling on board a small expedition ship creates the best opportunity to view the orcas and whales in the fjords. Being in the water with these remarkable animals always leaves me in awe, and I know I am not alone in my everlasting admiration for these amazing creatures.

We will alter our plans to take advantage of (day)light, weather, wildlife sightings and other one-of-a-kind opportunities which can vary from day to day. Bring a good portion of adventurous spirit and be prepared for cold but rewarding days out at sea.

The combination of wildlife, beautiful scenery and the amazing northern lights, truly creates an unforgettable experience of nature.

**Marlynda Elstgeest**

CEO & Owner  
Waterproof Cruises & Expeditions







# VOYAGE PROGRAMME

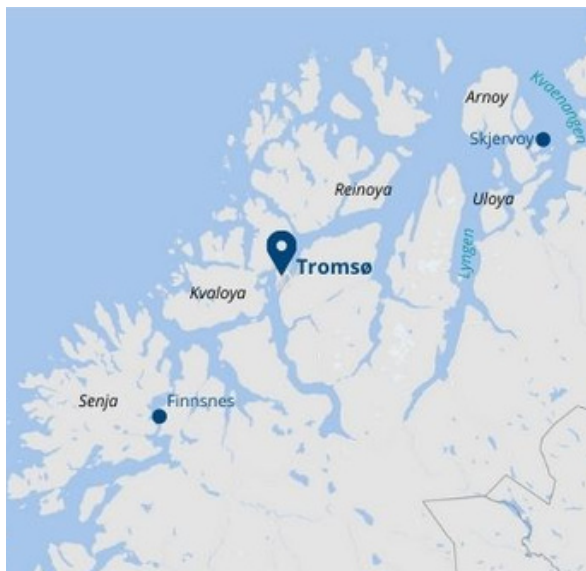
## WINTER WHALES OF NORWAY EXPEDITION CRUISE

### EMBARKATION: TROMSØ, NORWAY | DURATION: 6 NIGHTS/ 7 DAYS ON BOARD

Our **Winter Whales of Norway** expedition cruises depart from Tromsø, situated 350km above the Arctic circle. For only a very short period each winter, Northern Norway is the place of the largest gathering of orcas and whales in the world. They follow the enormous amount of spring-spawning herring that can be found in the fjords. This offers the unique opportunity to snorkel with wild orcas and watch their behaviour under water.

Tromsø is easily accessible by plane from most European countries. Embarkation starts around 16.30 in the afternoon of the first day. Our expedition guides will welcome you at the meeting point in Tromsø and escort you to one of our comfortable expedition ships. Once everyone is settled on board, we venture into the fjords in search of orcas and humpback whales. The advantages of travelling onboard one of our small ships are numerous, especially because we don't have to return to port. We can be on location at first daylight and maximise our time looking for whales. With the assistance of local experts, fishing vessels and the science community, we stay in touch about the whereabouts of the animals. For five full days, we search for schools of herring and pods of orcas and humpbacks in the protected surroundings of the beautiful fjords, waiting for a chance to swim with them. Ultimately we depend on nature and weather conditions for the success of our trips. This means, you may spend some days searching without success until an opportunity for snorkeling arises.

Our two expert guides will inform you about the behaviour of the orcas and whales, and how to snorkel with them in a responsible way. When whales have been spotted nearby, our guides will give you the sign to put on your snorkeling drysuit while they lower the zodiacs in the water. These small boats are our main method of transportation to get within a safe distance of the whales. It's an absolute privilege to see these enormous animals up close in their natural habitat. Carefully slide into the water and enjoy the moment!





### Whale watching from the ship

The bridge is a great place if you like to take your binoculars and scout the horizon for wildlife. When whales have been spotted, our guides will notify everyone onboard, so you won't miss anything. Previous winters we were lucky to see orcas, humpback whales, fin whales, and sperm whales! Outside on the spacious deck, you'll find good spots for photographing the animals and the beautiful scenery surrounding the ship.

### Whale watching from the zodiac

If you choose not to go snorkeling, no problem! You'll have just as much fun joining the zodiac excursion for a splendid topside photography experience. We provide comfortable, and waterproof zodiac suits to keep you warm.

### Educational lectures

Our guides offer an educational lecture program about whale conservation, research and other interesting topics. They love sharing their personal stories, insights and adventures, offering you a unique perspective on travel and exploration.

### Northern Lights

Winter is the perfect time for Northern Light sightings. During the dark hours we usually stay at anchor or we may go ashore to find a good spot to photograph the Aurora. Our guides are more than happy to assist you in adjusting your camera or phone for some spectacular photos.

Enjoy the warm and cozy comfort of the expedition ship. Take a moment to unwind in the sauna after a day out in the cold, or gaze at the skies from the hot-tub on deck.

Depending on the weather conditions, we may also offer the **Polar Plunge**, a chilling jump into the polar water! Not many people can say they swam above the Arctic circle in the dark, a once in a lifetime opportunity!

### End of the voyage

Our voyage ends in the same place where it started, in Tromsø. After breakfast on the last day, you will say farewell to the crew and your fellow expeditioners.

### IMPORTANT DISCLAIMER!

*A flexible attitude is paramount for our expeditions and the key to success. We are dealing with weather and wildlife, elements which are beyond our control. Therefore, we can't guarantee to see orcas or whales. Even when we do encounter whales and orcas, we can't guarantee the conditions are suitable for snorkeling.*





# INFORMATION & DETAILS

---

NEED TO KNOW BEFORE YOU GO





# SNORKELING PROCEDURES



## SAFE AND SUSTAINABLE OPERATIONS

During our expeditions, it's our goal to go in the water and observe orcas and whales in their natural habitat by snorkeling on the surface. To offer the best possible experience, we only take a maximum of 6-8 snorkelers per zodiac. When the guide decides it's safe to go snorkeling, the participants go into the water gently.

When you are in the water:

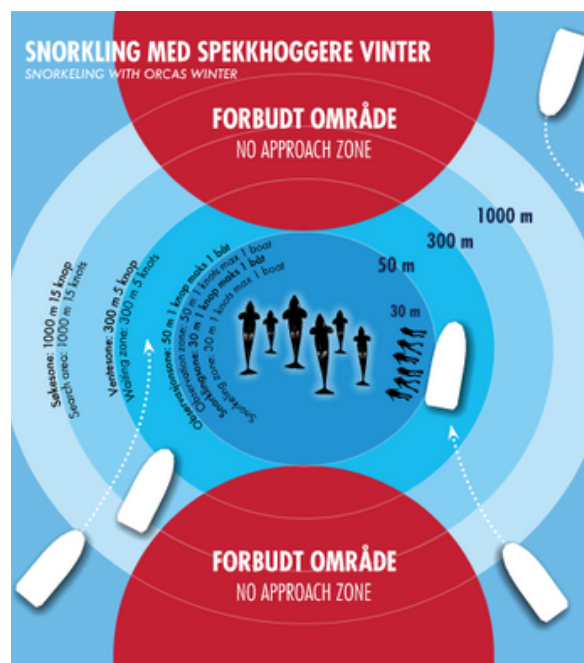
- Snorkelers keep visual contact with the guide on the zodiac so they can quickly respond to signals;
- Snorkelers have to keep a distance of at least 20 metres between them and the whales and must stay with the group at all times;
- Touching the whales or approaching them to make contact is strictly forbidden;
- Avoid diving, splashing and making loud noises.

If the orcas and whales move away, or show any sign of disturbance, the guide will signal you to come back to the zodiac. Sometimes you might only be in the water for a few minutes, but if we're lucky we can stay in the same location for hours.

### IMPORTANT - LEVEL OF FITNESS

The snorkeling activity is intended for persons in good health. You need a certain level of fitness and strength in order to participate. Putting on your snorkeling gear, actively swimming in cold water and getting in and out of the zodiac can be challenging. You have to be able to lift yourself out of the water, with the help of a small ladder, and into the zodiac. To embark the zodiacs, we use a gangway on the side of the ship. These are steep stairs leading down to water level. You will receive a briefing on board, explaining how to safely enter and exit the zodiacs.

You are free to give the snorkeling a try. If you decide not to go snorkeling you can still join the zodiac for exceptional top-side whale watching.





BY WATERPROOF®



We provide high quality polar snorkeling equipment, designed and developed by our sister-company **Waterproof International** in Sweden. An award-winning company and experts in designing high quality drysuits and undergarment.

Your FREE snorkeling package consists of:

- Waterproof Snorkeling Drysuit (*only if size is available*)
- Waterproof High Visibility Hood
- Waterproof 7 mm Mittens
- Waterproof Marine Boots
- Fins, Snorkel and Mask



## DRYSUIT SIZES

Please note that we only have a limited range of drysuit sizes available on board. We offer the following sizes: S - M - L - XL - XXL. Refer to our [size chart here](#) for details.

**We cannot be held liable if your chosen size does not fit. If you are uncertain of a fitting size, we strongly recommend bringing your own drysuit which you have tried out prior to the trip!**

## THERMAL OVERALLS - HIGHLY RECOMMENDED!

We offer rental thermal overalls. These insulating overalls have been specifically designed to wear under your drysuit and to keep you warm while snorkeling in cold water. They are very comfortable and also perfect to wear as a wind proof outer layer, for example while you are whale watching from the ship. Renting the overalls will save you a lot of space in your luggage!

Book now for only **€ 80 per person**  
 Sizes: S - M - L - XL - XXL



Thermal overalls





# SUSTAINABLE WHALE WATCHING



## MANAGING EXPECTATIONS

Rule number one when it comes to wildlife watching; Nothing is guaranteed! We will always do our utmost to offer you the best experience but cannot guarantee that all activities will take place as we've outlined in advance. We deal with wild animals in open water and unpredictable weather conditions. Therefore we ask all our guests to set realistic expectations and be flexible to make this experience a success.

Our guides are constantly on the lookout for orcas and whales. However, the whales are not always in the same spot and it might take some time to find them. The search is part of the adventure. Some days you might not see any whales or orcas at all. Don't let this get you down. Enjoy the beautiful scenery, the facilities of the ship and the company on board.

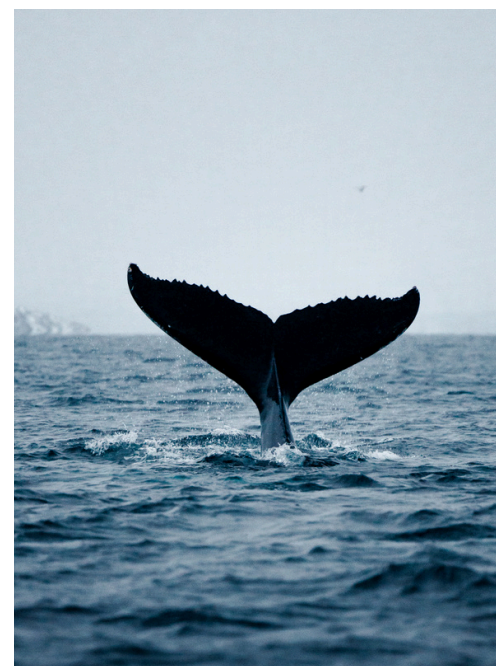
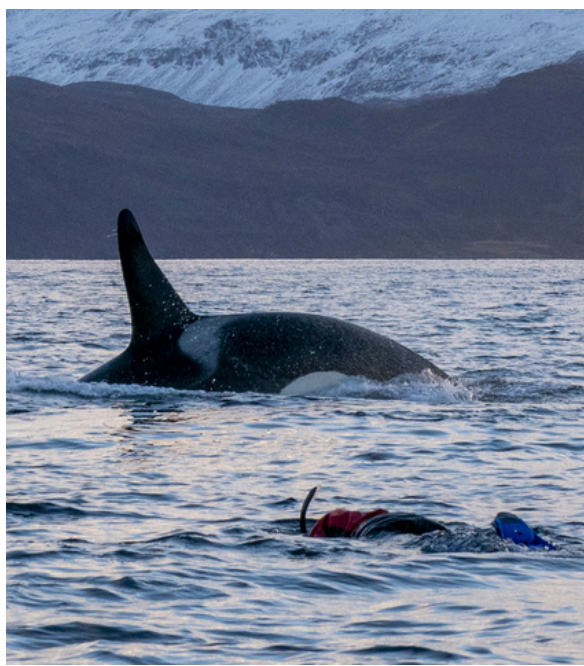
The captain and crew decide whether it's safe to launch the zodiacs from the ship. There are reasons why the guides might not approach the whales. For example, there are too many other vessels close to the whales or the animals are not feeding but underway to another location. Approaching whales will always be done cautiously, at a low speed towards the side of the pod. When snorkelers of other boats are already in the water, other zodiacs must wait at least 50 metres away. We always do our utmost to find whales in a calm area with no other boats around.

In Northern Norway, there are several popular locations where large numbers of orcas and whales return every year. These locations may be crowded with boats, creating unsafe situations for people and animals. This is why we often divert to other locations in search of whales away from the crowds.



## SUPPORTING NORWEGIAN ORCA SURVEY

Norwegian Orca Survey is a non-profit organization dedicated to researching and monitoring orcas in Norway. Using ground-breaking research methods and photo identification, they gather much-needed data for orca conservation. Waterproof Expeditions is proud to partner with Norwegian Orca Survey. To support their research we donate an amount for each passenger that travels to Norway with us. On board, you will receive more information about our partnership and the ways you can help the Norwegian Orca Survey research.





# WHEN TO GO?



Daylight



Twilight



Night

## WEATHER & DAYLIGHT

### WINTER IN NORTHERN NORWAY

Our voyages take place above the Arctic Circle during winter time. You might expect snow and ice, but the waters of the Gulf Stream give Northern Norway a rather mild climate for a place at this latitude. The average temperature will likely be around freezing and snow usually doesn't fall until half November. You can experience anything from storms, grey skies and choppy seas to sunny days with calm water. ALL weeks we operate are good for whale watching! It's the weather and behaviour of the whales that determines the success of our expeditions!

### DAYLIGHT HOURS & POLAR NIGHT

At the start of our season, end of October, we will enjoy several hours of daylight each day. Moving towards the end of the year, days shorten quickly. From the end of November, you will experience the Polar Night, the time of year when the sun does not rise above the horizon. Something you can only experience above the Arctic circle! The iconic Arctic light attracts many people to Northern Norway each winter. On clear days, the twilight hours offer a very particular luminosity and magnificent colors for photography. The faint sunlight is reflected off the water and the snow-capped mountains, transforming the fjords into a magical winter scenery. This twilight can last for several hours, plenty of time to capture the most breathtaking photos while the colours slowly change from pink and purple to deep blue.

### MOTHER NATURE

All elements of nature have to come together in order to go snorkeling. The weather has to be calm, the whales nearby, and we need enough light to safely go in the water. Each day can be different and there's not one trip better than the other. Our experience over the past years has learned us the weeks from end of October until mid-December offer the best chances. But keep in mind, it all comes down to mother nature!





# NORTHERN NORWAY



## TROMSØ REGION

Tromsø, situated at 69° North, is considered the most northern city in the world with a population of around 50.000. The city center of Tromsø contains the highest number of old wooden houses in Northern Norway, the oldest dating back to 1789. The Arctic Cathedral, a modern church from 1965, is probably the most famous landmark in Tromsø.

We recommend you arrive at least one day prior to embarkation, just in case your flight might be delayed. This also gives you the opportunity to explore the town's museums and cozy city centre or to go on an excursion.

We offer various optional activities, like dogsledding and snowmobile safaris. Please find [more information here](#). These optional activities depend on snowfall and are usually available from the first of December. If you would like to sign up for (one of) these activities, please let us know and we will arrange this for you in advance.

### Meeting point

Our meeting point is at the **Clarion Hotel The Edge**, which is close to where our ships are usually docked. You will receive more detailed information several weeks prior to departure.

### Hotels

There are plenty of nice hotels and other accommodations to choose from for your stay in Tromsø. The town is not big so you are never far away from the city centre and the harbor.

### Airport

Tromsø Airport is situated at Langnes on the western part of the island of Tromsøya in Tromsø, Norway. The main scheduled airlines operating at Tromsø are Scandinavian Airlines, Norwegian and Widerøe.

### Transport

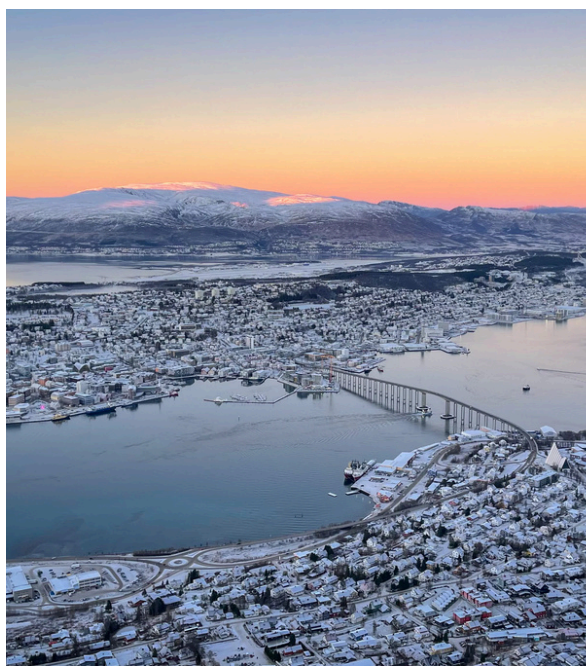
**Flybussen:** The airport express coach stops at several hotels in central Tromsø and takes 10-15 minutes to Tromsø city center.

**Local bus:** Route 40 and 42 stop at the airport and take approximately 15-20 minutes.

**Taxi:** The taxi stand is located directly outside the arrival hall. The travel time to Tromsø city center is approximately 10 minutes.

Taxi companies at the airport:

Tromsø Taxi: (+47) 03011 Din Taxi: (+47) 02045





# MEET OUR EXPEDITION SHIPS

---

WELCOME ON BOARD!





Refit planned  
in 2024



# BOUTIQUE YACHT POLARFRONT

SPACIOUS AND LUXURIOUS  
SMALL POLAR VESSEL

CAPACITY: 16 PASSENGERS | CABINS: 8 | DECKS: 3 | REFURBISHED: 2018 | LENGTH: 55M

Polarfront was built to face the rough north sea, making it an excellent expedition ship. After her years as a weather ship, Polarfront started a second life as an arctic expedition cruise vessel. The ship was nicely refurbished in 2018 and is getting another important upgrade in January 2024. Polarfront will be fitted with electric propulsion & power management systems. Resulting in reduced fuel consumption, energy savings, reduced emissions and allowing the ship to reach the best standards of environmental protection. Polarfront will be extremely quiet with almost no vibrations. Meaning more comfort on board for guests, and less noise transmitted into the water.



Polarfront has large outside decks, ideal for photography. On the aft deck you will find a panoramic barrel sauna and a hottub to warm up after a long cold day, a great way to unwind and enjoy the darker hours. Inside, there's a comfortable salon, dining area and library. Polarfront offers luxurious accommodation for 16 guests. The 8 twin suites are very spacious and each has their own comfortable bathroom with shower and at least 2 portholes.





# ACCOMODATION



## POLARFRONT - 16 GUESTS



### EXECUTIVE SUITE

- Very large suite with seating area
- Twin beds or double bed
- Large bathroom + separate toilet
- 3 closets and open shelves
- 4 porthole windows



### SUPERIOR SUITE

- Spacious suites
- Twin beds or double bed
- Private bathroom
- 2 or 3 porthole windows
- At least 2 closets for storage



### DELUXE SUITE

- Twin beds or double bed
- Private bathroom
- 2 or 3 porthole windows
- At least 2 closets for storage
- Situated in the front or middle the ship
- Suites #1 and #3 can be connected as a family room





# LUXURY YACHT EXPLORER

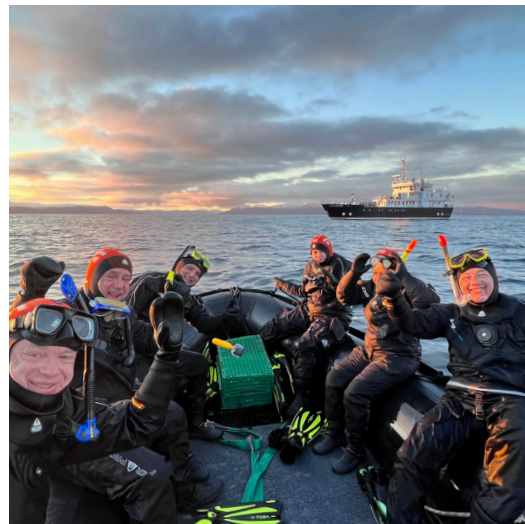
EXPEDITION CRUISING WITHOUT  
COMPROMISING ON COMFORT

CAPACITY: 12 PASSENGERS | CABINS: 9 | DECKS: 4 | REFURBISHED: 2021 | LENGTH: 46M

The polar yacht Explorer was originally built in 1994 as an oceanographic research vessel. It has recently been renovated to reduce its impact on the environment and the interior has been completely redesigned. The refurbished polar yacht now offers the most refined and high-end small ship cruising experience in the Arctic. With **only 12 guests** on board, it will like you are on a private luxury expedition!



The spacious open plan lounge has comfortable seating areas where you can relax and attend lectures. The panoramic windows offer an almost 360° view of the fjords. On the multiple level observation decks you will have plenty of opportunities for photography, or you can choose to spend some time on the spacious bridge with large windows, scanning the horizon looking for wildlife. During the darker hours, the sauna and jacuzzi are a great way to relax. On the upper deck you'll find 2 Single cabins and 2 comfortable Executive Suites with floor-to-ceiling windows, double beds and direct access to the deck. On the lower deck there are 2 Superior Suites, and 3 Deluxe Suites for single travellers. Each room has windows or portholes and a private bathroom.





# ACCOMMODATION



## EXPLORER - 12 GUESTS



### EXECUTIVE SUITE

- Spacious suite
- Double bed
- Luxury bathroom with walk-in shower
- Desk with chair
- Floor to ceiling window
- Situated on the upper deck
- Direct access to outside deck



### SUPERIOR SUITE

- Comfortable suites
- Double bed or twin beds
- Luxury bathroom with walk-in shower
- Porthole windows
- Situated on the lower deck



### SINGLE DELUXE SUITE

- For single travellers
- Comfortable suite for private use
- Double or twin beds
- Luxury bathroom with walk-in shower
- Porthole windows
- Situated on the lower deck



### SINGLE CABIN

- Comfortable cabin for single travellers
- Single bed
- Private bathroom
- Desk & chair
- Picture window
- Situated on the upper deck





# EXPEDITION SHIP VIRGO

REAL EXPEDITION STYLE  
POLAR YACHT

CAPACITY: 12 PASSENGERS | CABINS: 9 | DECKS: 3 | REFURBISHED: 2021 | LENGTH: 42M

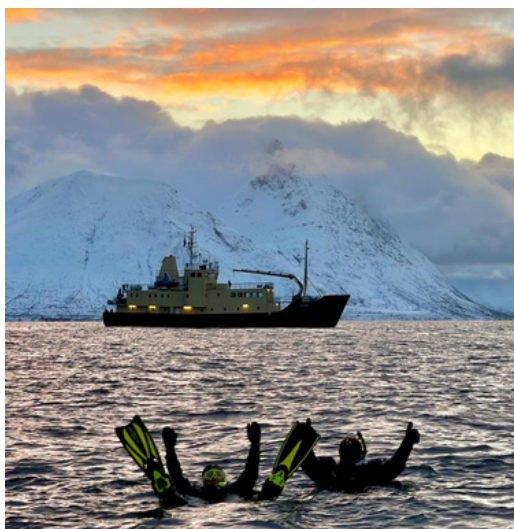
MS Virgo is an ideal ship for intimate small group expeditions to Northern Norway, offering bright and spacious inside areas and large deck spaces outside. She was originally built as a Swedish buoy laying vessel and has been completely refurbished to prepare her for new adventures as a leisure expedition ship.



Virgo can take up to **12 guests** in 9 cabins. All cabins have fresh new Scandinavian interiors and private bathrooms. There are 3 comfortable double cabins located on the upper deck, and 6 single cabins on the lower deck. Each cabin has a desk with a chair, some storage space and at least one window or porthole.

A great feature of MS Virgo is the spacious lounge on deck 2. The large windows offer good viewing opportunities in all directions and there's plenty of space for photo editing, listening to lectures or just having a drink with fellow travelers. It's the heart of the ship and a nice place to spend time during the darker hours.

Food will be served in the dining area three times per day, however we intend to be flexible should any wildlife suddenly appear. The chef has a varied and tasty menu that can be adapted to special dietary needs.





# ACCOMMODATION



## VIRGO - 12 GUESTS



### SUPERIOR SUITE

- Large cabin with seating area
- Twin beds
- Bathroom
- Ample storage space
- A desk with chair
- 2 windows
- Situated on the upper deck



### DELUXE TWIN CABIN

- Twin beds
- Bathroom
- Ample storage space
- A desk with chair
- 1 window
- Situated on the upper deck



### SINGLE CABIN

- Single bed
- Bathroom
- Ample storage space
- A desk with chair
- 1 window or porthole
- Situated on the lower deck



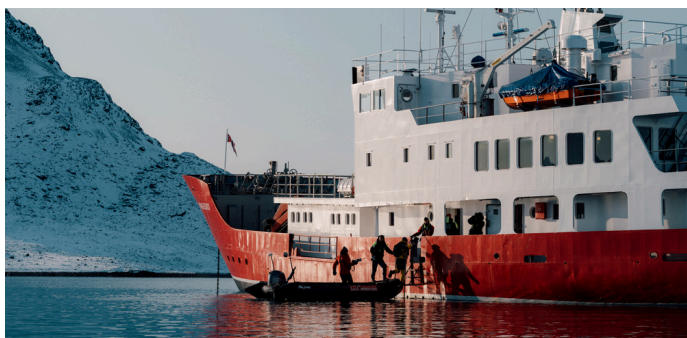


# VIKINGFJORD

NEW LUXURY  
EXPEDITION YACHT

CAPACITY: 12 PASSENGERS | CABINS: 8 | DECKS: 3 | REFURBISHED: 2023 | LENGTH: 42M

Vikingfjord is a luxury expedition ship with an ice-strengthened hull for exploring the polar regions. It has recently been renovated to reduce its impact on the environment and the interior has been completely redesigned. The refurbished polar vessel is one of most environmentally friendly small ships sailing in the Arctic today.



With its' new and light Scandinavian design interior, Vikingfjord offers great comfort for its 12 guests. Divided over decks 1, 2 and 3, you'll find 6 double/twin cabins and 2 dedicated single cabins, each with their own ensuite bathroom. The open plan observation lounge on deck 2, with its' large rear facing windows, is the heart of the ship. It has various comfortable seating areas for all guests to sit and enjoy the polar scenery, and direct access to the outside deck. The lounge is a place to chat with fellow expeditioners, listen to presentations or go through your photos of the day while enjoying a nice drink from the bar. You can enjoy freshly prepared meals in the restaurant on deck 1. And for those looking to heat up after a cold day in the arctic, the panoramic hot tub and sauna are at your disposal on deck 3.





# ACCOMMODATION

## VIKINGFJORD - 12 GUESTS



### SUPERIOR SUITE

- Double bed
- Private bathroom
- Located on deck 3 (upper deck)
- Windows
- Desk & chair
- Wardrobe



### DELUXE CABIN

- Comfortable Twin or Double Bed
- Private bathroom
- Located on decks 1 & 2
- At least 1 (porthole) window
- Desk & chair
- Wardrobe



### SINGLE CABIN

- For 1 Guest
- Comfortable single bed
- Private bathroom
- Located on decks 1 & 2
- At least 1 (porthole) window
- Desk & chair
- Wardrobe





# DATES & RATES 2025



Embarkation: Tromsø, Norway | Meeting time: 16.30 h. | Duration: 6 nights / 7 days

## POLARFRONT

16 guests



### Prices

Executive Suite	€ 5.700 pp
Superior Suite	€ 5.200 pp
Deluxe Suite	€ 4.900 pp

### Dates

26 Oct - 01 Nov 2025\*  
01 Nov - 07 Nov 2025\*  
07 Nov - 13 Nov 2025  
13 Nov - 19 Nov 2025  
19 Nov - 25 Nov 2025  
25 Nov - 01 Dec 2025\*

### Special departures in December!

5 nights / 4 days on board  
Reduced rate: 15% off

01 Dec - 06 Dec 2025  
06 Dec - 11 Dec 2025

## EXPLORER

12 guests



### Prices

Executive Suite	€ 6.300 pp
Superior Suite	€ 5.900 pp
Single Deluxe	€ 6.200 pp
Single Cabin	€ 6.100 pp

### Dates

28 Oct - 03 Nov 2025  
03 Nov - 09 Nov 2025  
09 Nov - 15 Nov 2025  
15 Nov - 21 Nov 2025  
21 Nov - 27 Nov 2025  
27 Nov - 03 Dec 2025

## VIRGO

12 guests



### Prices

Superior Suite	€ 5.200 pp
Deluxe Cabin	€ 4.800 pp
Single Cabin	€ 5.300 pp

### Dates

29 Oct - 04 Nov 2025  
04 Nov - 10 Nov 2025\*  
10 Nov - 16 Nov 2025\*  
16 Nov - 22 Nov 2025  
22 Nov - 28 Nov 2025  
28 Nov - 04 Dec 2025  
04 Dec - 10 Dec 2025

\*Limited availability, upon request





# TERMS & CONDITIONS

All prices are per person, based on double occupancy and depending on availability. We have dedicated single cabins on board Explorer, Virgo and Vikingfjord. On board Polarfront we can offer shared twin cabins on request (depending on availability). If you prefer a double cabin for single use, please note that a single supplement is applicable.

## Included in your voyage:

- 6 Nights accommodation on board
- Breakfast, lunch & dinner
  - *Starts with dinner on the first night, ends after breakfast on the last day*
- Coffee, tea & water throughout the day
- Snorkeling activity & snorkeling gear
- Warm zodiac suits for non-snorkelers
- Use of sauna & hot tub on board Polarfront, Explorer and Vikingfjord
- Lectures by the experienced guides
- All service taxes and port fees

## Not included:

- Rental thermal overalls (€ 80 p.p. at time of booking)
- Flights & transfers
- All items of a personal nature such as laundry, bar drinks, meals ashore and telephone charges
- Gratuities
- Pre and post voyage excursions and hotel.

## Insurances:

Travel Insurance with worldwide medical evacuation coverage is mandatory. We also strongly recommend you take out a trip cancellation insurance. This will cover your cancellation costs in case you need to cancel your trip after you confirmed your booking.

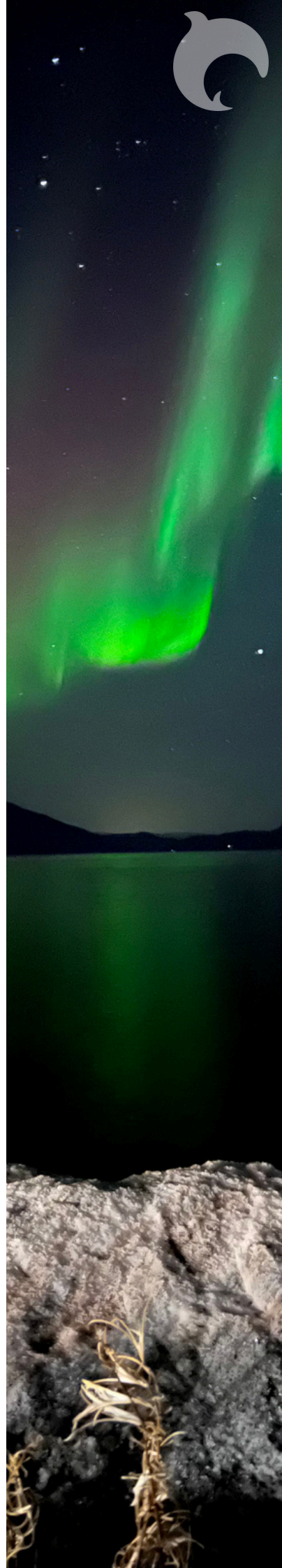
---

# PAYMENTS

If you are interested in signing up, please inform us by e-mail. We will then send you our option booking form. After completing this form, you will receive an invoice. We require a 30% deposit to confirm your booking. Once we have received your deposit, your reservation is confirmed and your place onboard guaranteed. The final payment is due 3 months prior to departure.

We accept payments via bank transfer or by credit card (Visa, Mastercard or American Express). When paying via bank wire transfer, please make sure to include all bank charges for both sending and receiving banks. The bank information and payment details will be provided on the invoice.

If you prefer to pay by credit card, we will send you a secure credit card payment request via e-mail. Please note that we charge a 4% fee for credit card payments.





### Photo credits

We would like to thank our dedicated expedition guides, onboard photographers and many guests for all the breathtaking images they allow us to use in our website, brochures and marketing.

With special thanks to:

Jens Wikström, Elisabeth Robinson, Rinie van Meurs, Szymon Niezabitowski, Johnny van Vliet, Debbie Bouma, Hazel Pittwood, David Gonzalez, Dan Zafra, Scott Portelli, Sarah-Kim Watchorn & Marcel Lesh.







# **WATERPROOF<sup>®</sup>** **EXPEDITIONS**



## **SVALBARD** **SIGNATURE EXPEDITIONS 2026**

On board Explorer



Dear guest,

Proudly, I present our carefully designed Signature Expeditions onboard luxury expedition yacht Explorer.

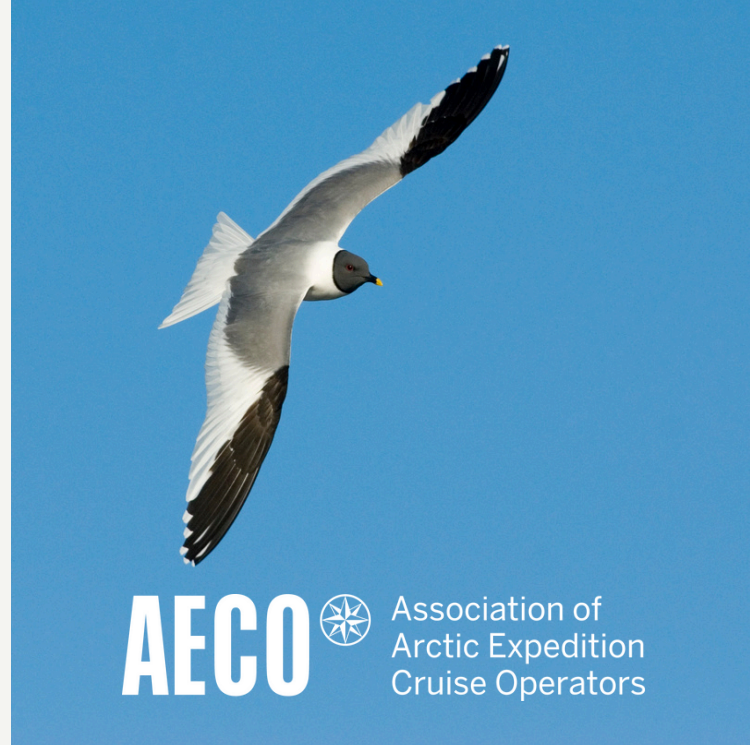
I believe in sharing special moments with like-minded guests who share the same passion for untouched places and appreciate learning from a team of experts. Our expedition team will show you the best of the Arctic and with our A1 ice-class expedition yacht, we are able to venture further where others stay behind.

After a thrilling day of adventure, there's no better way to unwind than by enjoying great food, talks with fellow travellers and relaxing in the wellness facilities onboard. You will feel completely recharged and ready for another day of exploration.

With travelling to the most pristine regions of our planet comes great responsibility. Waterproof Expeditions is a member of AECO, dedicated to ensure expedition cruise tourism benefits the regions it visits, with a strong focus on the natural environment, cultural preservation, local communities, and safe operations at sea and on land.

Bring a good portion of adventurous spirit and enjoy high end expedition travel without compromising on comfort.

**Marlynda Elstgeest**  
CEO & Owner



© Szymon Niezabitowski







## SVALBARD EXPEDITIONS

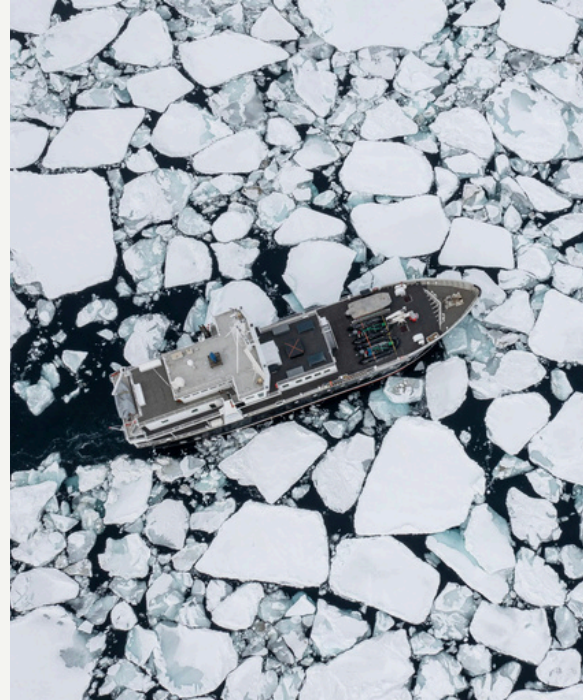


Longyearbyen, Svalbard



Spring/Summer 2026

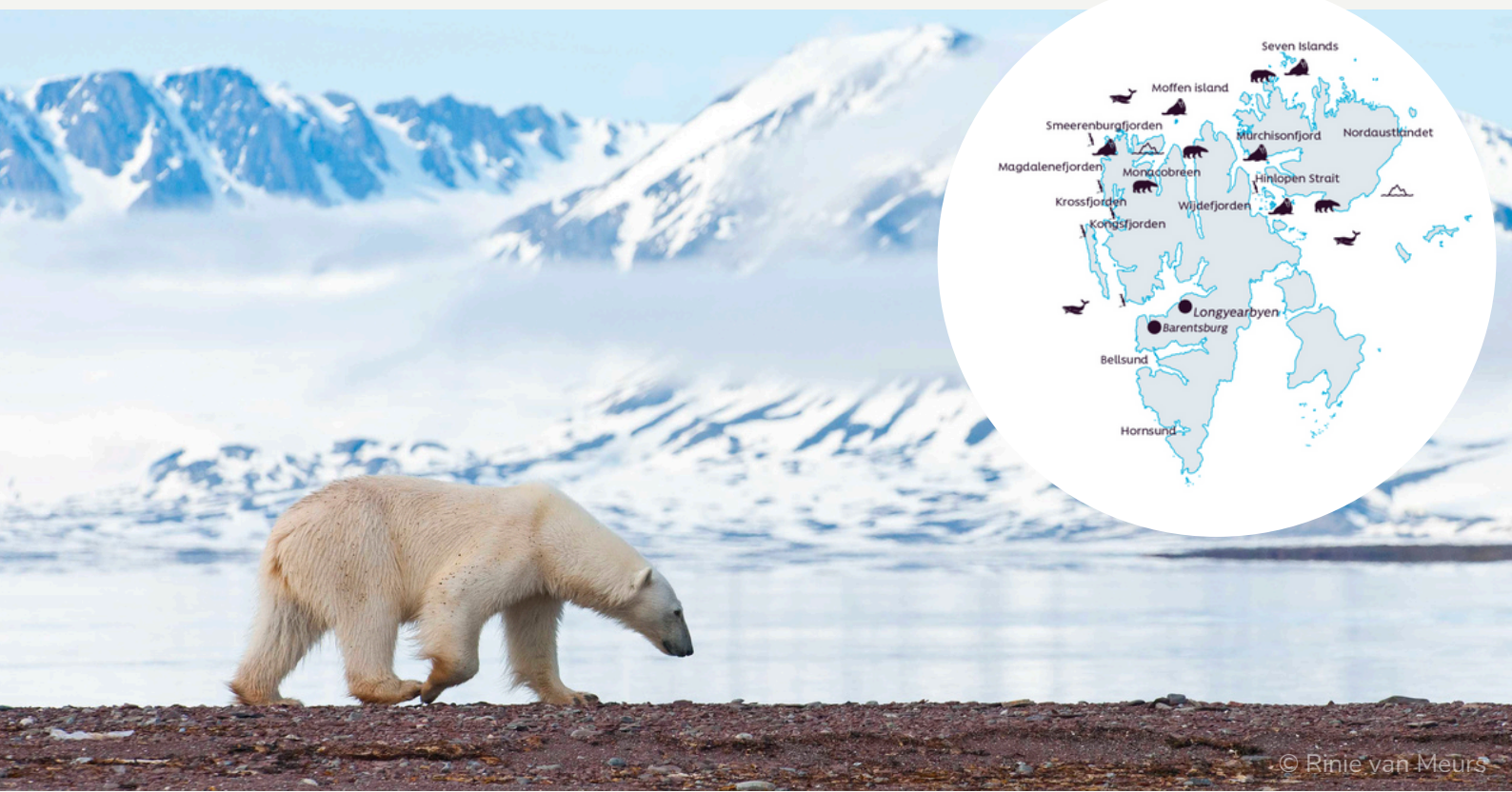
Our **Signature Expeditions** on board **Explorer** take you on an in-depth exploration of Svalbard. This exclusive setting offers a personal experience, guided by **Rinie van Meurs**, an Arctic expert with over 30 years of experience. His deep knowledge and passion bring the Arctic to life through engaging lectures, where you'll learn about Svalbard's wildlife, natural environment, and history.



We offer **8-, 10-, and 13-day** itineraries, each designed for an immersive Arctic experience. Wildlife is our top priority, and we place special emphasis on photography. With two expert guides and two zodiacs, all guests can participate in shore landings at the same time. Under the **midnight sun** we have ample time to explore, no matter which itinerary you choose.

Our **high ice-class** vessel Explorer allows us to venture into the **pack ice** in the far north. The pack ice is where most of Svalbard's **polar bears** can be found and our favourite place to observe them hunting for seals. Beyond bears, we expect to encounter an array of Arctic wildlife, including walrus, whales, reindeer, Arctic foxes, and countless seabirds.

These voyages are especially designed to experience the Arctic in a way that respects our fragile polar environment. Travelling aboard a small expedition yacht allows for a rich and meaningful experience. This intimate setting provides flexibility to take advantage of light conditions and unique wildlife encounters, ensuring you capture extraordinary images. With flexibility and spontaneity at the core, this is an expedition in the true sense of the word!







## SVALBARD AWAKENING

---

### WILDLIFE UNDER THE MIDNIGHT SUN

#### DATES

- 11 - 20 June 2026 - 10 days/ 09 nights
- 20 - 29 June 2026 - 10 days/ 09 nights

#### EXPEDITION HIGHLIGHTS

- Spring season at its' peak.
- Snow melting, making shore landings and hikes possible.
- Remaining snow makes for beautiful landscape photography.
- Chances to spot polar bears in the fjords and on the ice.
- Tundra flowers begin to bloom.
- Thriving seabird colonies with bird chicks hatching.
- Arctic foxes trying to steal bird eggs.
- Walrus with calves can be spotted resting on glacier ice.
- Whales are more frequently sighted.

#### DAY 1 | START IN LONGYEARBYEN

Boarding takes place late in the afternoon. Departing from Longyearbyen, the ship will sail through Isfjorden, the gateway to the west coast of Svalbard.

#### DAY 2-9 | EXPLORING WEST SVALBARD

In June, Svalbard comes to life with melting snow, blooming flowers, and incredible wildlife activity. Perfect for photographers and nature lovers! Some days will be spent watching wildlife from the ship, while other days you might go on zodiac cruises or landings ashore. Always keep your eyes out for Arctic wildlife, like walrus, reindeer and Arctic foxes.

Taking advantage of the ships' ice capacity, we hope to reach the pack ice in the north. From here onwards, there's only ice all the way up to the north pole. If lucky, we might spot polar bears and whales!

#### DAY 10 | END IN LONGYEARBYEN

Disembarkation takes place after breakfast.

**Tip!** Experience the Summer Solstice in Svalbard on 21 June.



# SVALBARD'S FROZEN NORTH

## EXPEDITION INTO THE PACK ICE

### Dates:

29 June - 11 July - 13 days/ 12 nights

11 July - 23 July - 13 days/ 12 nights

### EXPEDITION HIGHLIGHTS

- Extended 13-day expedition for in-depth exploration.
- Multiple days in the pack ice to maximise polar bear sightings.
- Focus on wildlife encounters.
- Expert-led photography opportunities.
- Navigating as far as 80° north as the sea ice retreats.
- Exploring under 24-hour daylight to make the most of every moment.
- Peak wildlife season with an abundance of Arctic animals.
- Bustling seabird colonies.
- Visit walrus haulouts.

### DAY 1 | START IN LONGYEARBYEN

As soon as the ship sets sail, you find yourself in a breathtaking Arctic landscape.

### DAY 2-12 | SVALBARD & PACK ICE

You'll travel north along the west coast while enjoying zodiac cruises and shore landings in various locations where our expedition team expects to find wildlife.

Our guides have a professional photography background and will maximise photography opportunities. We aim to sail as far north as possible, venturing deep into the pack ice. This ice realm is our favorite place, beyond the reach of most other vessels. An ever-changing frozen wilderness where we plan to spend several days capturing its unique beauty and, with luck, see polar bears in their natural habitat where they can hunt seals in summer. At the same time, it's a great place to spot whales as they feed along the ice edge.

**TIP!** Extra long voyage with multiple days in the pack ice to maximise polar bear sightings.

### DAY 13 | END LONGYEARBYEN

You'll disembark in Longyearbyen after breakfast on the final day of your trip.







## SVALBARD UNTAMED

### WILDLIFE & WILDERNESS

#### DATES

23 July - 30 July 2026 - 8 days/ 07 nights

30 July - 06 August 2026 - 8 days/ 07 nights

#### EXPEDITION HIGHLIGHTS

- Peak bird activity with chicks practicing their flying skills.
- Arctic fox pups start exploring and hunting on their own.
- Tundra at its' most vibrant.
- Suitable for longer hikes and exploration ashore.
- Bears and seals might be spotted in the drifting sea ice.
- Walrus at their haulouts on land.
- Algae bloom attracting more whales.
- Melt waterfalls along glacier fronts.
- Glaciers calving.
- Generally mild weather.

#### DAY 1 | START IN LONGYEARBYEN

Once onboard you will have some time to get comfortable and enjoy the views as the ship sets sail along the rugged coastline.

#### DAY 2-7 | EXPLORING WEST SVALBARD

Walrus haulouts, bird colonies, gigantic calving glaciers and vibrant tundra, Svalbard offers a unique array of natural riches at the height of summer. The expedition team will design your voyage from day to day, maximising your time in Svalbard. Some days will be spent watching wildlife from the ship, while other days you might go on zodiac cruises along the coast or landings ashore. Depending on the circumstances, we might navigate north towards the pack ice, in order to capture that unique feeling of being at the end of the world.

#### DAY 8 | END LONGYEARBYEN

On the last day of your voyage, you disembark in Longyearbyen after breakfast.

**Tip!** The best choice if you have limited time and want to see the best of Svalbard.





# EXPLORER

## LUXURY YACHT



12 PASSENGERS



JACUZZI & SAUNA



A1 ICE-CLASS

Explorer was originally built as an oceanographic research vessel. The A1 ice-class polar yacht is designed for easy navigation through high seas and ice, enabling it to venture into the pack ice. This significantly enhances our chances of spotting wildlife on the ice.

Our polar yacht offers the most refined and high-end small ship cruising experience in the Arctic. With only 12 guests on board, it will feel like you are on a private luxury expedition! Explorer has recently been renovated to reduce its impact on the environment and the interior has been completely redesigned. Outside, you'll find several observation decks at various levels, perfect for wildlife and landscape photography.



## ACCOMMODATION

We believe exploration should be paired with exceptional comfort. On board Explorer, all cabins have been thoughtfully designed and furnished with the essential amenities that will make you feel comfortable during your trip. The upper deck features two Single Cabins and two luxurious Executive Suites with floor-to-ceiling windows, double beds, and direct access to the outside deck. The lower deck hosts two Superior Suites and three Deluxe Single Suites. All rooms feature private bathrooms.

## FACILITIES

The highlight of Explorer is the exceptional open-plan lounge and dining area with nearly 360° panoramic views. After a day of exploring the Arctic, our guides offer an educational lecture programme about wildlife, nature and other interesting topics. But your day doesn't have to end there. Take a moment to unwind and sip on a cocktail as you gaze upon the beautiful landscape from the sauna or jacuzzi on deck.

## DINING

Savour the flavours of the Arctic and beyond with fresh meals served 3 times per day. The chef offers a diverse menu, blending local ingredients with international cuisines. Coffee, tea and water are available throughout the day and you will always find a nice snack in the afternoon. With its warm ambiance and expansive ocean views, every meal becomes a memorable dining experience on board Explorer.





## EXECUTIVE SUITE

- Spacious suite
- Double bed
- Luxury bathroom with walk-in shower
- Desk with chair
- Floor to ceiling window
- Picture window
- Situated on the upper deck
- Quick acces to the sauna and jacuzzi



---

## SUPERIOR SUITE

- Comfortable suites
- Double bed or twin beds
- Luxury bathroom with walk-in shower
- Desk and chair
- Porthole windows
- Situated on the lower deck





## SINGLE DELUXE SUITE

- For single travellers
- Twin suite for private use
- Double or twin beds
- Luxury bathroom with walk-in shower
- Desk and chair
- Porthole windows
- Situated on the lower deck



---

## SINGLE CABIN

- Comfortable cabin for single travellers
- Single bed
- Standard bathroom
- Desk and chair
- Picture window
- Situated on the upper deck





# YOUR GUIDES

---

## POLAR EXPERTS

### EXPEDITION LEADER: RINIE VAN MEURS

You'll be guided by our most experienced expedition leader, Rinie van Meurs. With an unparalleled 34 consecutive years of leading over 250 expeditions in Svalbard, he's a true expert. Throughout his career, he photographed and studied countless polar bears, developing a deep passion for the animals and the Arctic ecosystem as a whole. His extensive knowledge of the sea ice environment led him to author the book: *The Future Polar Bear: The Impact of the Vanishing Sea Ice on an Arctic Ecosystem*. Rinie will give his undivided attention to spotting wildlife, ensuring you can capture the beauty of this extraordinary wilderness.

**Rinie:** *"The vast wilderness and the animals are the main reasons why I keep coming back to the Arctic. Using weather forecasts, ice charts, and past experiences, I carefully plan each trip to maximise wildlife sightings, without disturbing the animals. Being an avid photographer myself, I consider the light conditions and guide my guests on how to approach wildlife encounters for the best possible experience."*

### GUIDE: SZYMON NIEZABITOWSKI

Szymon, born in Kraków, Poland, studied Biology and Geography, earning a degree from the Faculty of Biology and Earth Sciences. He began his career at the Institute of Systematics and Evolution of Animals but has always been a passionate naturalist and mountaineer with a deep interest in high-latitude wildlife and geography. In 2018, he fulfilled his dream of becoming a circumpolar guide, spending nearly half a year on Spitsbergen, immersed in the Arctic wilderness. Since then, he has worked as an expedition guide in the polar regions and Northern Norway.

**Szymon:** *"The most beautiful place to witness polar bears is in the sea ice. We travel on board a specific ship that has the capability to go into that environment. Strong, but also small, with outside decks close to the water in order to photograph wildlife at a good angle. We have no fixed itinerary and might stay in the same area for an extended period, at one with the environment. This increases our chances of seeing wildlife dramatically compared to standard expeditions on larger ships."*





# ENVIRONMENTAL REGULATIONS

---

## VISITING SVALBARD

As of 01 January 2025, all tourist ships in Svalbard are required to adhere to new regulations. These rules have been put in place to protect the environment and safeguard an increasingly fragile wildlife amid the challenges of climate change and rising visitor numbers. We believe visiting Svalbard will remain an extraordinary experience and a unique chance to view Arctic animals in their natural home.

### RESTRICTIONS IN PROTECTED AREAS

The most impactful new regulations involve restrictions on visiting protected areas:

- A limit of 200 passengers on board ships
- Landings are limited to 43 landing sites of which 13 will be restricted to a maximum of 39 persons at once
- The use of drones is prohibited in protected areas

These restrictions are of hardly any impact on our operations. Our expeditions take place on board small ships (12 guests), allowing us to maintain access to all of Svalbard's landing sites. Additionally, our high ice-class vessel Explorer allows us to explore the pack ice, which is outside Svalbard's territorial waters.

### DISTANCES TO WILDLIFE

Stricter regulations will be enforced regarding the viewing of wildlife:

- Minimum distances from polar bears; 300 meters from July 1 to February 28, 500 meters from March 1 to June 30.
- Minimum distances from walrus haulout sites; 50m when on land and 150m for motorised boats with a maximum speed 5 knots within 300 metres.
- A speed limit of 5 knots applies within 500 metres from certain bird colonies.

Keep in mind, nothing will change in regards to approaching polar bears, which has never been allowed.

Providing the best possible photography and wildlife viewing, while maintaining a safe distance, is our top priority. Beyond polar bears, we always keep an eye out for walrus, seals, whales, arctic foxes, and birds not to mention the spectacular scenery.

Travelling to Svalbard means embracing the unexpected. We cannot guarantee wildlife, or influence weather and ice. But we can guarantee, with our small groups, we'll be flexible to offer quality time in the Arctic!





# DATES & RATES SVALBARD 2026

On board Explorer - 12 guests

	Single Cabin	Single Deluxe	Superior Suite	Executive Suite
<b>11 June - 20 June</b> (10 days / 09 nights)	Euro 13.900	Euro 14.400	Euro 13.500	Euro 14.900
<b>20 June - 29 June</b> (10 days / 09 nights)	Euro 13.900	Euro 14.400	Euro 13.500	Euro 14.900
<b>29 June - 11 July</b> (13 days / 12 nights)	Upon request	Upon request	Upon request	Upon request
<b>11 July - 23 July</b> (13 days / 12 nights)	Euro 18.400	Euro 18.800	Euro 17.900	Euro 19.900
<b>23 July - 30 July</b> (8 days / 7 nights)	Euro 11.000	Euro 11.200	Euro 10.800	Euro 12.900
<b>30 July - 06 Aug</b> (8 days / 7 nights)	Euro 11.000	Euro 11.200	Euro 10.800	Euro 12.900

All prices are per person. Please [contact us](#) for the latest availability.

## INCLUDED

- Accommodation on board.
- Breakfast, lunch & dinner. Starts with dinner on the first night, ends after breakfast on the last day.
- Coffee, tea and water throughout the day.
- Warm zodiac suits
- Rubber boots for landings. Limited sizes available, please bring your own boots if your want to be certain of a well-fitting pair.
- Shore landings and zodiac cruises.
- Use of sauna and jacuzzi.
- Lectures by the experienced guides.
- All service taxes and port fees.

## NOT INCLUDED

- Flights & transfers. We recommend scheduling your flight home for the afternoon or evening at the earliest.
- All items of a personal nature such as laundry, bar drinks, etc.
- Gratuities for ships crew and expedition staff.
- Travel insurance
- Pre and post voyage excursions and hotel.



## MANDATORY INSURANCE

Travel insurance with worldwide medical evacuation coverage is mandatory. We also strongly recommend taking out trip cancellation insurance. This will cover your costs in case you need to cancel your trip after you've confirmed your booking.

## BOOKING

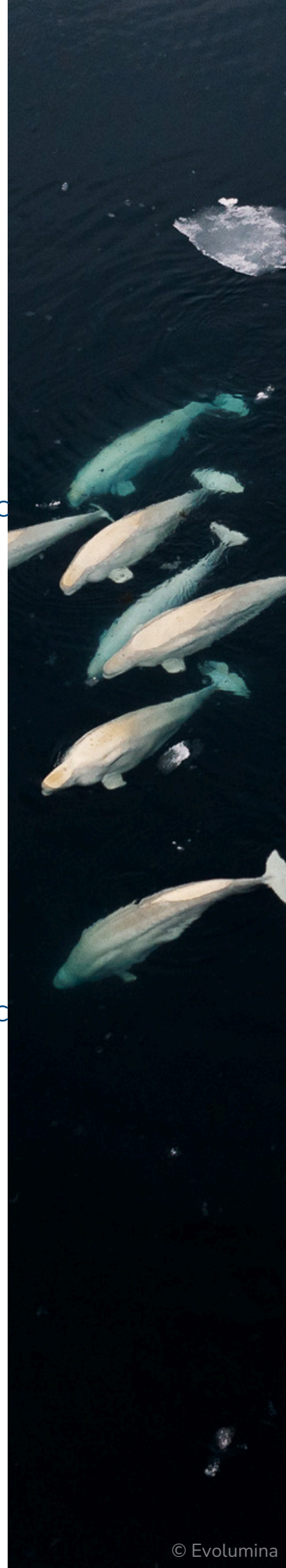
If you are interested in signing up, please inform us by e-mail. We require a 30% deposit to confirm your booking. Once we have received your deposit, your place onboard is guaranteed. The final payment is due 3 months prior to departure.

We accept payments via bank transfer or by credit card (Visa, Mastercard or American Express). The bank information and payment details will be provided on the invoice.

If you prefer to pay by credit card, we will send you a secure credit card payment request via e-mail. Please note, a 4% fee for credit card payments is applicable.

## DISCLAIMER

There is no fixed route for our expeditions. The ice conditions and wildlife behaviour will determine our plans. The success of our voyages is based on realistic expectations and your personal flexibility.







## **Waterproof Expeditions is a provisional member of AECO**

The Association of Arctic Expedition Cruise Operators (AECO) is a membership organisation representing Arctic expedition cruise operators and industry stakeholders. AECO is dedicated to ensuring that expedition cruise tourism benefits the regions it visits, with a strong focus on the natural environment, cultural preservation, local communities, and safe operations at sea and on land. Waterproof Expeditions works with AECO operators and takes great pride in educating passengers on wilderness etiquette and visitor guidelines.





# POLAR ADVENTURES

Schiffs- und Flug- Expeditionen  
in Arktis und Antarktis

## OFFLINE-KATALOG-ANFORDERUNG

Sehr geehrte Reise-Interessenten. Vielen Dank für Ihr Interesse und den Download eines digitalen Kataloges im PDF-Format.

Gerne senden wir Ihnen zusätzlich bei weitergehendem Interesse die ausgewählten PDF-Inhalte als gedruckte Version auf dem Postweg.

Bitte nennen Sie unten den gewünschten Katalog und senden Sie dieses Formular per Post oder Fax an uns zurück.

Bitte senden Sie mir den aktuellen Katalog für folgendes Schiff/ Tour:

--

Bitte senden Sie den ausgewählten Katalog an folgende Adresse:

Vorname + Name

Telefonnummer

--	--

Strasse + Nr.

Faxnummer

--	--

PLZ + Wohnort

e-mail-Adresse

--	--

Bitte per Post an:

oder per Fax an 04131-54255

an POLARADVENTURES Schiffs- und Flug-Expeditionen in Arktis und Antarktis Heinrich-Böll-Str. 40 D-21335 Lüneburg
--



# POLAR ADVENTURES

## Schiffs- und Flug- Expeditionen in Arktis und Antarktis

**Unverbindliche Buchungsanfrage per Fax an 04131-54255 oder per Post an  
Polaradventures, Heinrich-Böll-Str. 40, D-21335 Lüneburg, Deutschland**

Bitte unterbreiten Sie mir ein unverbindliches Angebot für folgende Leistungen:

- ☐ Veranstalter-Angebot mit Insolvenzversicherung nach deutschem Reiseveranstalterrecht + Preis in EUR  
☐ Direkt-Angebot der ausländischen Reedereien (ausländ. Reiserecht + Preis in USD zum Tageskurs in EUR)

Schiffsname		
Reisename/ -Route		
Abfahrt von - bis (tt/mm - tt/mm/jj)		
Alternative Abfahrt (tt/mm - tt/mm/jj) (falls ausgebucht)		
Kabinenkategorie		
Alternative Kabinenkategorie (falls ausgebucht)		

- ☐ Doppelkabine ☐ Doppelkabine zur Einzelnutzung ☐ Halbe Doppelkabine zur Mitbenutzung

Zubringerflüge:

Abflughafen		
Hinflugdatum (tt/mm/jj)		
Rückflugdatum (tt/mm/jj)		
bevorzugte Airline		

- ☐ Economy-Class ☐ Business-Class

Zusätzliche Hotelübernachtungen:

Hotelname/Übernachtungsort		
Aufenthalt von - bis (tt/mm - tt/mm/jj)		
Hotelname/Übernachtungsort		
Aufenthalt von - bis (tt/mm - tt/mm/jj)		

Reiseversicherungen:

- ☐ keine  
☐ Reiserücktrittskostenversicherung  
☐ Komplettschutz (Reiserücktritts-, Kranken-, Unfall-, Gepäck- und Notfallversicherung)

Persönliche Angaben:

1. Reiseteilnehmer Vorname, Name / Geburtsdatum		
2. Reiseteilnehmer Vorname, Name / Geburtsdatum		

Angebot bitte:

<input type="checkbox"/> per Email an (Emailadresse)		
<input type="checkbox"/> per Fax an (Nummer)		
<input type="checkbox"/> per Post an (Vorname & Name) (Straße & Nr.) (PLZ & Wohnort)		

**POLARADVENTURES Schiffs- und Flug-Expeditionen in Arktis und Antarktis**

**Reiseagentur \* Heinrich-Böll-Str. 40 \* D-21335 Lüneburg \* Deutschland**

**Tel +49-4131- 223474 Fax +49-4131-54255 [infos@polaradventures.de](mailto:infos@polaradventures.de) [www.polaradventures.de](http://www.polaradventures.de)**