



**WATERPROOF<sup>®</sup>**  
**EXPEDITIONS**



**WINTER WHALES OF NORWAY**  
**2024 & 2025**





# SNORKELING WITH ORCAS & WHALES

---

DISCOVER THE WORLD OF  
WATERPROOF!

Dear Explorer,

It has been over 20 years since I operated my first expedition and many have followed since. Organising trips to the polar regions is a fascinating and challenging undertaking. Every voyage is designed around wildlife experiences and sceneries that makes your heart skip a beat.

During the winter months, we operate our **"Winter Whales of Norway"** expeditions in Northern Norway. A unique experience for anyone interested in orcas, whales, white-tailed eagles, Arctic winter, northern lights and breathtaking landscapes.

Travelling on board a small expedition ship creates the best opportunity to view the orcas and whales in the fjords. Being in the water with these remarkable animals always leaves me in awe, and I know I am not alone in my everlasting admiration for these amazing creatures.

We will alter our plans to take advantage of (day)light, weather, wildlife sightings and other one-of-a-kind opportunities which can vary from day to day. Bring a good portion of adventurous spirit and be prepared for cold but rewarding days out at sea.

The combination of wildlife, beautiful scenery and the amazing northern lights, truly creates an unforgettable experience of nature.

**Marlynda Elstgeest**

CEO & Owner

Waterproof Cruises & Expeditions







# VOYAGE PROGRAMME

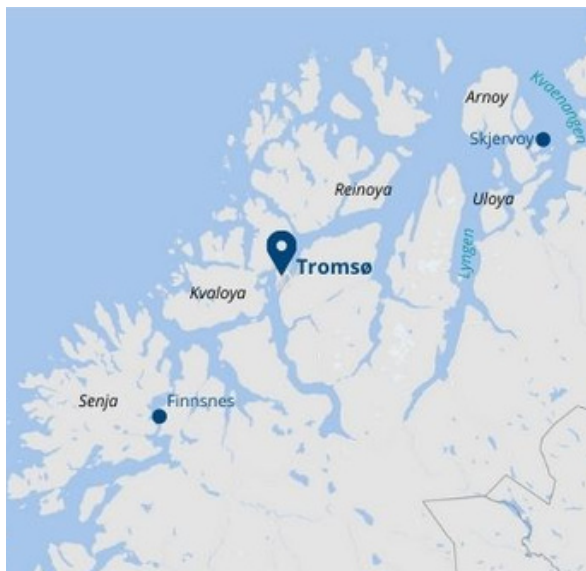
## WINTER WHALES OF NORWAY EXPEDITION CRUISE

### EMBARKATION: TROMSØ, NORWAY | DURATION: 6 NIGHTS/ 7 DAYS ON BOARD

Our **Winter Whales of Norway** expedition cruises depart from Tromsø, situated 350km above the Arctic circle. For only a very short period each winter, Northern Norway is the place of the largest gathering of orcas and whales in the world. They follow the enormous amount of spring-spawning herring that can be found in the fjords. This offers the unique opportunity to snorkel with wild orcas and watch their behaviour under water.

Tromsø is easily accessible by plane from most European countries. Embarkation starts around 16.30 in the afternoon of the first day. Our expedition guides will welcome you at the meeting point in Tromsø and escort you to one of our comfortable expedition ships. Once everyone is settled on board, we venture into the fjords in search of orcas and humpback whales. The advantages of travelling onboard one of our small ships are numerous, especially because we don't have to return to port. We can be on location at first daylight and maximise our time looking for whales. With the assistance of local experts, fishing vessels and the science community, we stay in touch about the where-abouts of the animals. For five full days, we search for schools of herring and pods of orcas and humpbacks in the protected surroundings of the beautiful fjords, waiting for a chance to swim with them. Ultimately we depend on nature and weather conditions for the success of our trips. This means, you may spend some days searching without success until an opportunity for snorkeling arises.

Our two expert guides will inform you about the behaviour of the orcas and whales, and how to snorkel with them in a responsible way. When whales have been spotted nearby, our guides will give you the sign to put on your snorkeling drysuit while they lower the zodiacs in the water. These small boats are our main method of transportation to get within a safe distance of the whales. It's an absolute privilege to see these enormous animals up close in their natural habitat. Carefully slide into the water and enjoy the moment!





### Whale watching from the ship

The bridge is a great place if you like to take your binoculars and scout the horizon for wildlife. When whales have been spotted, our guides will notify everyone onboard, so you won't miss anything. Previous winters we were lucky to see orcas, humpback whales, fin whales, and sperm whales! Outside on the spacious deck, you'll find good spots for photographing the animals and the beautiful scenery surrounding the ship.

### Whale watching from the zodiac

If you choose not to go snorkeling, no problem! You'll have just as much fun joining the zodiac excursion for a splendid topside photography experience. We provide comfortable, and waterproof zodiac suits to keep you warm.

### Educational lectures

Our guides offer an educational lecture program about whale conservation, research and other interesting topics. They love sharing their personal stories, insights and adventures, offering you a unique perspective on travel and exploration.

### Northern Lights

Winter is the perfect time for Northern Light sightings. During the dark hours we usually stay at anchor or we may go ashore to find a good spot to photograph the Aurora. Our guides are more than happy to assist you in adjusting your camera or phone for some spectacular photos.

Enjoy the warm and cozy comfort of the expedition ship. Take a moment to unwind in the sauna after a day out in the cold, or gaze at the skies from the hot-tub on deck.

Depending on the weather conditions, we may also offer the **Polar Plunge**, a chilling jump into the polar water! Not many people can say they swam above the Arctic circle in the dark, a once in a lifetime opportunity!

### End of the voyage

Our voyage ends in the same place where it started, in Tromsø. After breakfast on the last day, you will say farewell to the crew and your fellow expeditioners.

### IMPORTANT DISCLAIMER!

*A flexible attitude is paramount for our expeditions and the key to success. We are dealing with weather and wildlife, elements which are beyond our control. Therefore, we can't guarantee to see orcas or whales. Even when we do encounter whales and orcas, we can't guarantee the conditions are suitable for snorkeling.*





# INFORMATION & DETAILS

---

NEED TO KNOW BEFORE YOU GO





# SNORKELING PROCEDURES



## SAFE AND SUSTAINABLE OPERATIONS

During our expeditions, it's our goal to go in the water and observe orcas and whales in their natural habitat by snorkeling on the surface. To offer the best possible experience, we only take a maximum of 6-8 snorkelers per zodiac. When the guide decides it's safe to go snorkeling, the participants go into the water gently.

When you are in the water:

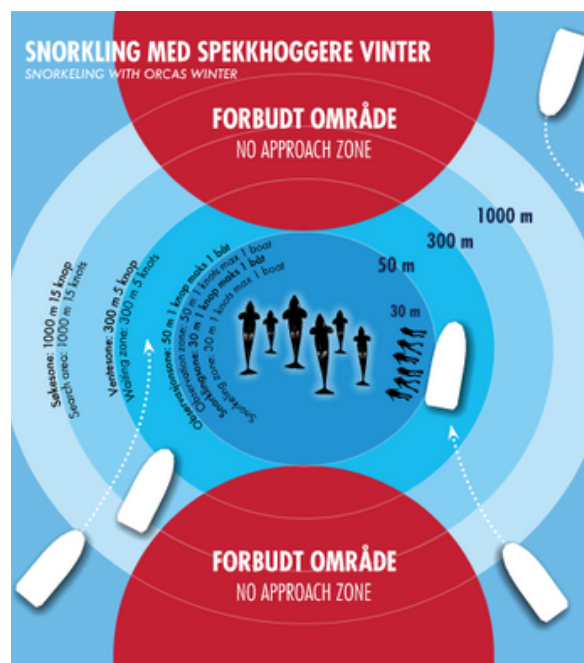
- Snorkelers keep visual contact with the guide on the zodiac so they can quickly respond to signals;
- Snorkelers have to keep a distance of at least 20 metres between them and the whales and must stay with the group at all times;
- Touching the whales or approaching them to make contact is strictly forbidden;
- Avoid diving, splashing and making loud noises.

If the orcas and whales move away, or show any sign of disturbance, the guide will signal you to come back to the zodiac. Sometimes you might only be in the water for a few minutes, but if we're lucky we can stay in the same location for hours.

### IMPORTANT - LEVEL OF FITNESS

The snorkeling activity is intended for persons in good health. You need a certain level of fitness and strength in order to participate. Putting on your snorkeling gear, actively swimming in cold water and getting in and out of the zodiac can be challenging. You have to be able to lift yourself out of the water, with the help of a small ladder, and into the zodiac. To embark the zodiacs, we use a gangway on the side of the ship. These are steep stairs leading down to water level. You will receive a briefing on board, explaining how to safely enter and exit the zodiacs.

You are free to give the snorkeling a try. If you decide not to go snorkeling you can still join the zodiac for exceptional top-side whale watching.





BY WATERPROOF®



We provide high quality polar snorkeling equipment, designed and developed by our sister-company **Waterproof International** in Sweden. An award-winning company and experts in designing high quality drysuits and undergarment.

Your FREE snorkeling package consists of:

- Waterproof Snorkeling Drysuit (*only if size is available*)
- Waterproof High Visibility Hood
- Waterproof 7 mm Mittens
- Waterproof Marine Boots
- Fins, Snorkel and Mask



## DRYSUIT SIZES

Please note that we only have a limited range of drysuit sizes available on board. We offer the following sizes: S - M - L - XL - XXL. Refer to our [size chart here](#) for details.

**We cannot be held liable if your chosen size does not fit. If you are uncertain of a fitting size, we strongly recommend bringing your own drysuit which you have tried out prior to the trip!**

## THERMAL OVERALLS - HIGHLY RECOMMENDED!

We offer rental thermal overalls. These insulating overalls have been specifically designed to wear under your drysuit and to keep you warm while snorkeling in cold water. They are very comfortable and also perfect to wear as a wind proof outer layer, for example while you are whale watching from the ship. Renting the overalls will save you a lot of space in your luggage!

Book now for only **€ 80 per person**  
 Sizes: S - M - L - XL - XXL



Thermal overalls





# SUSTAINABLE WHALE WATCHING



## MANAGING EXPECTATIONS

Rule number one when it comes to wildlife watching; Nothing is guaranteed! We will always do our utmost to offer you the best experience but cannot guarantee that all activities will take place as we've outlined in advance. We deal with wild animals in open water and unpredictable weather conditions. Therefore we ask all our guests to set realistic expectations and be flexible to make this experience a success.

Our guides are constantly on the lookout for orcas and whales. However, the whales are not always in the same spot and it might take some time to find them. The search is part of the adventure. Some days you might not see any whales or orcas at all. Don't let this get you down. Enjoy the beautiful scenery, the facilities of the ship and the company on board.

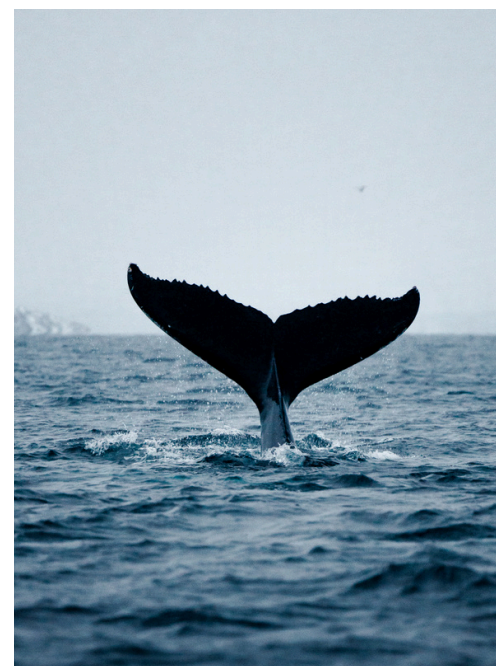
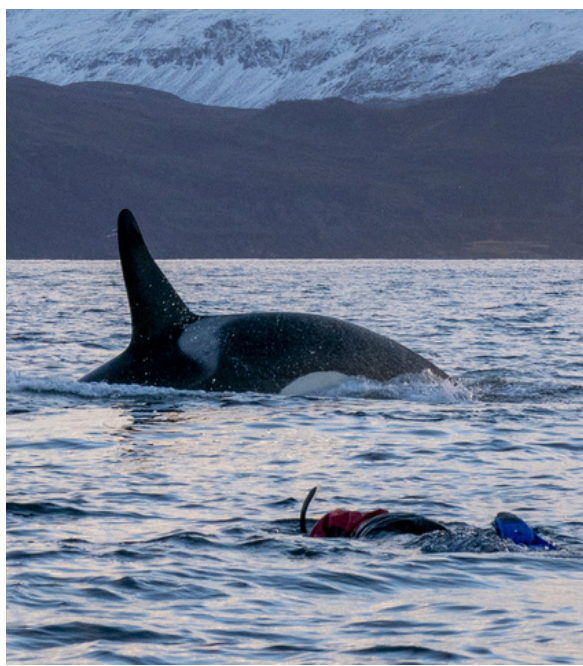
The captain and crew decide whether it's safe to launch the zodiacs from the ship. There are reasons why the guides might not approach the whales. For example, there are too many other vessels close to the whales or the animals are not feeding but underway to another location. Approaching whales will always be done cautiously, at a low speed towards the side of the pod. When snorkelers of other boats are already in the water, other zodiacs must wait at least 50 metres away. We always do our utmost to find whales in a calm area with no other boats around.

In Northern Norway, there are several popular locations where large numbers of orcas and whales return every year. These locations may be crowded with boats, creating unsafe situations for people and animals. This is why we often divert to other locations in search of whales away from the crowds.



### SUPPORTING NORWEGIAN ORCA SURVEY

Norwegian Orca Survey is a non-profit organization dedicated to researching and monitoring orcas in Norway. Using ground-breaking research methods and photo identification, they gather much-needed data for orca conservation. Waterproof Expeditions is proud to partner with Norwegian Orca Survey. To support their research we donate an amount for each passenger that travels to Norway with us. On board, you will receive more information about our partnership and the ways you can help the Norwegian Orca Survey research.





# WHEN TO GO?



Daylight



Twilight



Night

## WEATHER & DAYLIGHT

### WINTER IN NORTHERN NORWAY

Our voyages take place above the Arctic Circle during winter time. You might expect snow and ice, but the waters of the Gulf Stream give Northern Norway a rather mild climate for a place at this latitude. The average temperature will likely be around freezing and snow usually doesn't fall until half November. You can experience anything from storms, grey skies and choppy seas to sunny days with calm water. ALL weeks we operate are good for whale watching! It's the weather and behaviour of the whales that determines the success of our expeditions!

### DAYLIGHT HOURS & POLAR NIGHT

At the start of our season, end of October, we will enjoy several hours of daylight each day. Moving towards the end of the year, days shorten quickly. From the end of November, you will experience the Polar Night, the time of year when the sun does not rise above the horizon. Something you can only experience above the Arctic circle! The iconic Arctic light attracts many people to Northern Norway each winter. On clear days, the twilight hours offer a very particular luminosity and magnificent colors for photography. The faint sunlight is reflected off the water and the snow-capped mountains, transforming the fjords into a magical winter scenery. This twilight can last for several hours, plenty of time to capture the most breathtaking photos while the colours slowly change from pink and purple to deep blue.

### MOTHER NATURE

All elements of nature have to come together in order to go snorkeling. The weather has to be calm, the whales nearby, and we need enough light to safely go in the water. Each day can be different and there's not one trip better than the other. Our experience over the past years has learned us the weeks from end of October until mid-December offer the best chances. But keep in mind, it all comes down to mother nature!





# NORTHERN NORWAY



## TROMSØ REGION

Tromsø, situated at 69° North, is considered the most northern city in the world with a population of around 50.000. The city center of Tromsø contains the highest number of old wooden houses in Northern Norway, the oldest dating back to 1789. The Arctic Cathedral, a modern church from 1965, is probably the most famous landmark in Tromsø.

We recommend you arrive at least one day prior to embarkation, just in case your flight might be delayed. This also gives you the opportunity to explore the town's museums and cozy city centre or to go on an excursion.

We offer various optional activities, like dogsledding and snowmobile safaris. Please find [more information here](#). These optional activities depend on snowfall and are usually available from the first of December. If you would like to sign up for (one of) these activities, please let us know and we will arrange this for you in advance.

### Meeting point

Our meeting point is at the **Clarion Hotel The Edge**, which is close to where our ships are usually docked. You will receive more detailed information several weeks prior to departure.

### Hotels

There are plenty of nice hotels and other accommodations to choose from for your stay in Tromsø. The town is not big so you are never far away from the city centre and the harbor.

### Airport

Tromsø Airport is situated at Langnes on the western part of the island of Tromsøya in Tromsø, Norway. The main scheduled airlines operating at Tromsø are Scandinavian Airlines, Norwegian and Widerøe.

### Transport

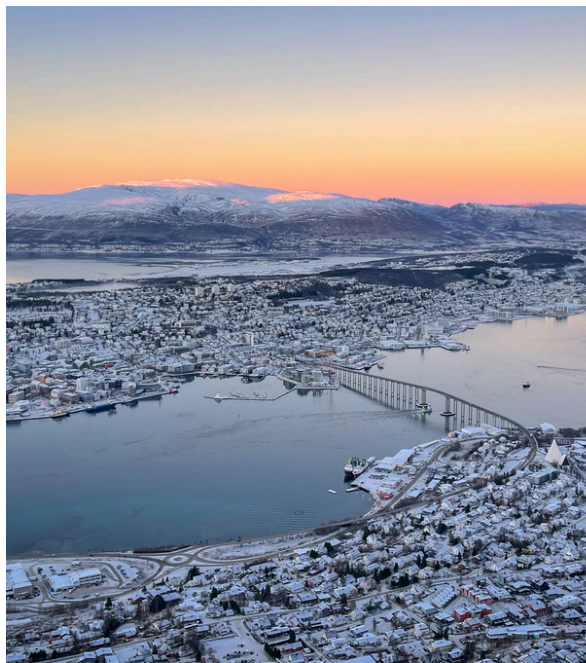
**Flybussen:** The airport express coach stops at several hotels in central Tromsø and takes 10-15 minutes to Tromsø city center.

**Local bus:** Route 40 and 42 stop at the airport and take approximately 15-20 minutes.

**Taxi:** The taxi stand is located directly outside the arrival hall. The travel time to Tromsø city center is approximately 10 minutes.

Taxi companies at the airport:

Tromsø Taxi: (+47) 03011 Din Taxi: (+47) 02045





# MEET OUR EXPEDITION SHIPS

---

WELCOME ON BOARD!





Refit planned  
in 2024



# BOUTIQUE YACHT POLARFRONT

SPACIOUS AND LUXURIOUS  
SMALL POLAR VESSEL

CAPACITY: 16 PASSENGERS | CABINS: 8 | DECKS: 3 | REFURBISHED: 2018 | LENGTH: 55M

Polarfront was built to face the rough north sea, making it an excellent expedition ship. After her years as a weather ship, Polarfront started a second life as an arctic expedition cruise vessel. The ship was nicely refurbished in 2018 and is getting another important upgrade in January 2024. Polarfront will be fitted with electric propulsion & power management systems. Resulting in reduced fuel consumption, energy savings, reduced emissions and allowing the ship to reach the best standards of environmental protection. Polarfront will be extremely quiet with almost no vibrations. Meaning more comfort on board for guests, and less noise transmitted into the water.



Polarfront has large outside decks, ideal for photography. On the aft deck you will find a panoramic barrel sauna and a hottub to warm up after a long cold day, a great way to unwind and enjoy the darker hours. Inside, there's a comfortable salon, dining area and library. Polarfront offers luxurious accommodation for 16 guests. The 8 twin suites are very spacious and each has their own comfortable bathroom with shower and at least 2 portholes.





# ACCOMODATION



## POLARFRONT - 16 GUESTS



### EXECUTIVE SUITE

- Very large suite with seating area
- Twin beds or double bed
- Large bathroom + separate toilet
- 3 closets and open shelves
- 4 porthole windows



### SUPERIOR SUITE

- Spacious suites
- Twin beds or double bed
- Private bathroom
- 2 or 3 porthole windows
- At least 2 closets for storage



### DELUXE SUITE

- Twin beds or double bed
- Private bathroom
- 2 or 3 porthole windows
- At least 2 closets for storage
- Situated in the front or middle the ship
- Suites #1 and #3 can be connected as a family room





# LUXURY YACHT EXPLORER

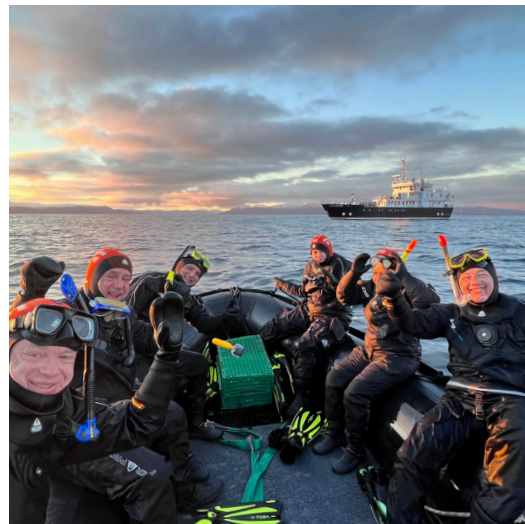
EXPEDITION CRUISING WITHOUT  
COMPROMISING ON COMFORT

CAPACITY: 12 PASSENGERS | CABINS: 9 | DECKS: 4 | REFURBISHED: 2021 | LENGTH: 46M

The polar yacht Explorer was originally built in 1994 as an oceanographic research vessel. It has recently been renovated to reduce its impact on the environment and the interior has been completely redesigned. The refurbished polar yacht now offers the most refined and high-end small ship cruising experience in the Arctic. With **only 12 guests** on board, it will like you are on a private luxury expedition!



The spacious open plan lounge has comfortable seating areas where you can relax and attend lectures. The panoramic windows offer an almost 360° view of the fjords. On the multiple level observation decks you will have plenty of opportunities for photography, or you can choose to spend some time on the spacious bridge with large windows, scanning the horizon looking for wildlife. During the darker hours, the sauna and jacuzzi are a great way to relax. On the upper deck you'll find 2 Single cabins and 2 comfortable Executive Suites with floor-to-ceiling windows, double beds and direct access to the deck. On the lower deck there are 2 Superior Suites, and 3 Deluxe Suites for single travellers. Each room has windows or portholes and a private bathroom.





# ACCOMMODATION



## EXPLORER - 12 GUESTS



### EXECUTIVE SUITE

- Spacious suite
- Double bed
- Luxury bathroom with walk-in shower
- Desk with chair
- Floor to ceiling window
- Situated on the upper deck
- Direct access to outside deck



### SUPERIOR SUITE

- Comfortable suites
- Double bed or twin beds
- Luxury bathroom with walk-in shower
- Porthole windows
- Situated on the lower deck



### SINGLE DELUXE SUITE

- For single travellers
- Comfortable suite for private use
- Double or twin beds
- Luxury bathroom with walk-in shower
- Porthole windows
- Situated on the lower deck



### SINGLE CABIN

- Comfortable cabin for single travellers
- Single bed
- Private bathroom
- Desk & chair
- Picture window
- Situated on the upper deck





# EXPEDITION SHIP VIRGO

REAL EXPEDITION STYLE  
POLAR YACHT

CAPACITY: 12 PASSENGERS | CABINS: 9 | DECKS: 3 | REFURBISHED: 2021 | LENGTH: 42M

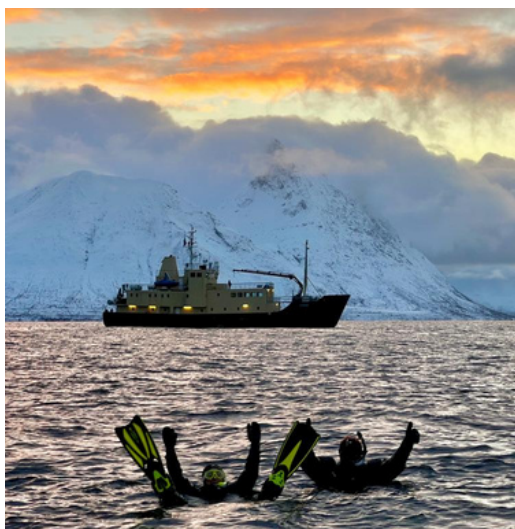
MS Virgo is an ideal ship for intimate small group expeditions to Northern Norway, offering bright and spacious inside areas and large deck spaces outside. She was originally built as a Swedish buoy laying vessel and has been completely refurbished to prepare her for new adventures as a leisure expedition ship.



Virgo can take up to **12 guests** in 9 cabins. All cabins have fresh new Scandinavian interiors and private bathrooms. There are 3 comfortable double cabins located on the upper deck, and 6 single cabins on the lower deck. Each cabin has a desk with a chair, some storage space and at least one window or porthole.

A great feature of MS Virgo is the spacious lounge on deck 2. The large windows offer good viewing opportunities in all directions and there's plenty of space for photo editing, listening to lectures or just having a drink with fellow travelers. It's the heart of the ship and a nice place to spend time during the darker hours.

Food will be served in the dining area three times per day, however we intend to be flexible should any wildlife suddenly appear. The chef has a varied and tasty menu that can be adapted to special dietary needs.





# ACCOMMODATION



## VIRGO - 12 GUESTS



### SUPERIOR SUITE

- Large cabin with seating area
- Twin beds
- Bathroom
- Ample storage space
- A desk with chair
- 2 windows
- Situated on the upper deck



### DELUXE TWIN CABIN

- Twin beds
- Bathroom
- Ample storage space
- A desk with chair
- 1 window
- Situated on the upper deck



### SINGLE CABIN

- Single bed
- Bathroom
- Ample storage space
- A desk with chair
- 1 window or porthole
- Situated on the lower deck



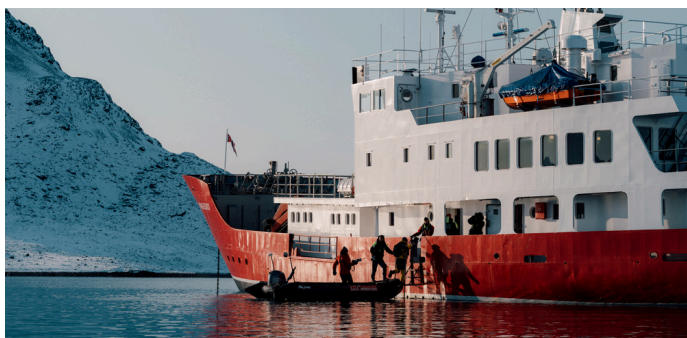


# VIKINGFJORD

## NEW LUXURY EXPEDITION YACHT

CAPACITY: 12 PASSENGERS | CABINS: 8 | DECKS: 3 | REFURBISHED: 2023 | LENGTH: 42M

Vikingfjord is a luxury expedition ship with an ice-strengthened hull for exploring the polar regions. It has recently been renovated to reduce its impact on the environment and the interior has been completely redesigned. The refurbished polar vessel is one of most environmentally friendly small ships sailing in the Arctic today.



With its' new and light Scandinavian design interior, Vikingfjord offers great comfort for its 12 guests. Divided over decks 1, 2 and 3, you'll find 6 double/twin cabins and 2 dedicated single cabins, each with their own ensuite bathroom. The open plan observation lounge on deck 2, with its' large rear facing windows, is the heart of the ship. It has various comfortable seating areas for all guests to sit and enjoy the polar scenery, and direct access to the outside deck. The lounge is a place to chat with fellow expeditioners, listen to presentations or go through your photos of the day while enjoying a nice drink from the bar. You can enjoy freshly prepared meals in the restaurant on deck 1. And for those looking to heat up after a cold day in the arctic, the panoramic hot tub and sauna are at your disposal on deck 3.





# ACCOMMODATION

## VIKINGFJORD - 12 GUESTS



### SUPERIOR SUITE

- Double bed
- Private bathroom
- Located on deck 3 (upper deck)
- Windows
- Desk & chair
- Wardrobe



### DELUXE CABIN

- Comfortable Twin or Double Bed
- Private bathroom
- Located on decks 1 & 2
- At least 1 (porthole) window
- Desk & chair
- Wardrobe



### SINGLE CABIN

- For 1 Guest
- Comfortable single bed
- Private bathroom
- Located on decks 1 & 2
- At least 1 (porthole) window
- Desk & chair
- Wardrobe





LAST CABINS!



# DATES & RATES 2024

Embarkation: Tromsø, Norway | Meeting time: 16.30 h. | Duration: 6 nights / 7 days

LAST CABINS AVAILABLE FOR WINTER 2024-2025!

Contact us if you want to be added to the waiting list for other departure dates.

## POLARFRONT 16 guests



20 NOV - 26 NOV 2024	Deluxe Suite	€ 4.900 pp	1 spot (female)
10 JAN - 16 JAN 2025	Executive Suite	€ 5.600 pp	
	Superior Suite	€ 5.100 pp	
	Deluxe Suite	€ 4.900 pp	

## EXPLORER 12 guests



22 OCT - 28 OCT 2024	Superior Suite	€ 5.900 pp	
	Single Deluxe	€ 6.100 pp	
	Single Cabin	€ 5.900 pp	
28 OCT - 03 NOV 2024	Executive Suite	€ 6.300 pp	
03 NOV - 09 NOV 2024	Superior Suite	€ 5.900 pp	

## VIRGO 12 guests



29 OCT - 04 NOV 2024	Superior Suite	€ 5.100 pp	
04 DEC - 10 DEC 2024	Single Cabin	€ 5.200 pp	

## VIKINGFJORD 12 guests



01 NOV - 07 NOV 2024	Deluxe Suite	€ 5.700 pp	1 spot (female)
07 NOV - 13 NOV 2024	Deluxe Suite	€ 5.700 pp	



# DATES & RATES 2025



Embarkation: Tromsø, Norway | Meeting time: 16.30 h. | Duration: 6 nights / 7 days

## POLARFRONT

16 guests



### Prices

Executive Suite	€ 5.700 pp
Superior Suite	€ 5.200 pp
Deluxe Suite	€ 4.900 pp

### Dates

26 Oct - 01 Nov 2025*
01 Nov - 07 Nov 2025*
07 Nov - 13 Nov 2025
13 Nov - 19 Nov 2025
19 Nov - 25 Nov 2025
25 Nov - 01 Dec 2025*

### Special departures in December!

5 nights / 4 days on board  
Reduced rate: 15% off

01 Dec - 06 Dec 2025
06 Dec - 11 Dec 2025

## EXPLORER

12 guests



### Prices

Executive Suite	€ 6.300 pp
Superior Suite	€ 5.900 pp
Single Deluxe	€ 6.200 pp
Single Cabin	€ 6.100 pp

### Dates

28 Oct - 03 Nov 2025
03 Nov - 09 Nov 2025
09 Nov - 15 Nov 2025
15 Nov - 21 Nov 2025
21 Nov - 27 Nov 2025
27 Nov - 03 Dec 2025

## VIRGO

12 guests



### Prices

Superior Suite	€ 5.200 pp
Deluxe Cabin	€ 4.800 pp
Single Cabin	€ 5.300 pp

### Dates

29 Oct - 04 Nov 2025
04 Nov - 10 Nov 2025*
10 Nov - 16 Nov 2025*
16 Nov - 22 Nov 2025
22 Nov - 28 Nov 2025
28 Nov - 04 Dec 2025
04 Dec - 10 Dec 2025

\*Limited availability, upon request





# TERMS & CONDITIONS

All prices are per person, based on double occupancy and depending on availability. We have dedicated single cabins on board Explorer, Virgo and Vikingfjord. On board Polarfront we can offer shared twin cabins on request (depending on availability). If you prefer a double cabin for single use, please note that a single supplement is applicable.

## Included in your voyage:

- 6 Nights accommodation on board
- Breakfast, lunch & dinner
  - *Starts with dinner on the first night, ends after breakfast on the last day*
- Coffee, tea & water throughout the day
- Snorkeling activity & snorkeling gear
- Warm zodiac suits for non-snorkelers
- Use of sauna & hot tub on board Polarfront, Explorer and Vikingfjord
- Lectures by the experienced guides
- All service taxes and port fees

## Not included:

- Rental thermal overalls (€ 80 p.p. at time of booking)
- Flights & transfers
- All items of a personal nature such as laundry, bar drinks, meals ashore and telephone charges
- Gratuities
- Pre and post voyage excursions and hotel.

## Insurances:

Travel Insurance with worldwide medical evacuation coverage is mandatory. We also strongly recommend you take out a trip cancellation insurance. This will cover your cancellation costs in case you need to cancel your trip after you confirmed your booking.

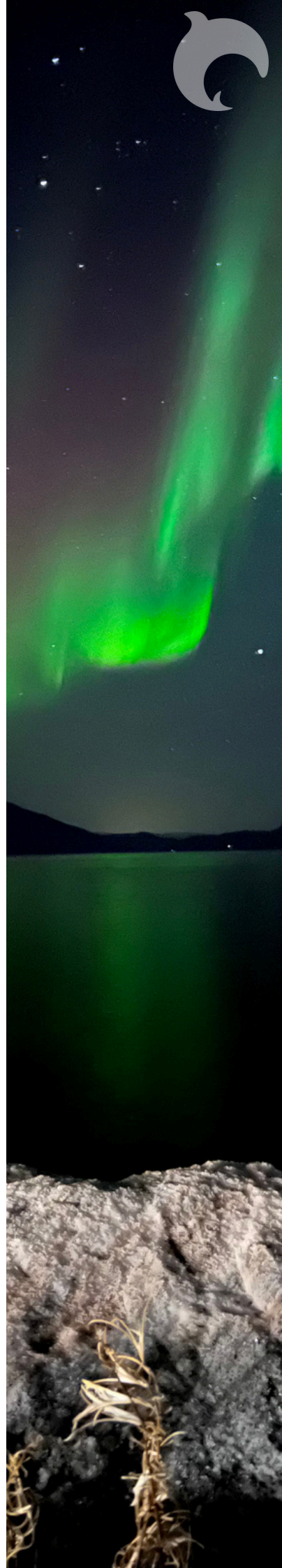
---

# PAYMENTS

If you are interested in signing up, please inform us by e-mail. We will then send you our option booking form. After completing this form, you will receive an invoice. We require a 30% deposit to confirm your booking. Once we have received your deposit, your reservation is confirmed and your place onboard guaranteed. The final payment is due 3 months prior to departure.

We accept payments via bank transfer or by credit card (Visa, Mastercard or American Express). When paying via bank wire transfer, please make sure to include all bank charges for both sending and receiving banks. The bank information and payment details will be provided on the invoice.

If you prefer to pay by credit card, we will send you a secure credit card payment request via e-mail. Please note that we charge a 4% fee for credit card payments.





### Photo credits

We would like to thank our dedicated expedition guides, onboard photographers and many guests for all the breathtaking images they allow us to use in our website, brochures and marketing.

With special thanks to:

Jens Wikström, Elisabeth Robinson, Rinie van Meurs, Szymon Niezabitowski, Johnny van Vliet, Debbie Bouma, Hazel Pittwood, David Gonzalez, Dan Zafra, Scott Portelli, Sarah-Kim Watchorn & Marcel Lesh.

