



WATERPROOF[®]
EXPEDITIONS

SVALBARD 2025

NATURE & WILDLIFE



SIGNATURE EXPEDITIONS



Dear guest,

Our **Waterproof Signature Expeditions** are carefully designed voyages with unique features. These small-group expeditions take place on luxury polar yachts, guided by our own team of experts. The flexibility of a small expedition yacht makes it possible to optimise every opportunity to show you the best of the Arctic. We intend to reach places far removed from where most large vessels are sailing. Accompanied by experts and a small group of like-minded guests, you will uncover the fascinating wilderness of the Arctic.

We will alter our plans to take advantage of (day)light, weather, wildlife sightings and other opportunities which may vary from day to day. Bring a good portion of adventurous spirit and be prepared for cold but rewarding days out at sea. The combination of wildlife, beautiful scenery and a comfortable expedition ship, creates an unforgettable experience. This is true expedition style travel!

Marlynda Elstgeest
CEO & Owner





SVALBARD NATURE & WILDLIFE PHOTOGRAPHY

SIGNATURE EXPEDITION

EMBARKATION: LONGYEARBYEN, SVALBARD | **DURATION:** 10-12 DAYS | **SHIP:** EXPLORER

Our Signature Expeditions in Svalbard take you on an **in-depth wildlife expedition**. With a small group of only 12 guests, it's a unique and personal experience. Your expedition leader Rinie van Meurs has over 30 years of experience in the Arctic, and a wealth of knowledge that he enthusiastically shares with his guests. During lectures on board, Rinie and Szymon will tell you all about the animals, natural environment and history of Svalbard.

The long summer days offer plenty of time to explore the beautiful nature and polar animals of Svalbard. With two expert guides and two zodiacs on board, all guests can do landings at the same time. Our main priority will be **looking for polar bears** and other wildlife, and we pay extra attention to photography. Depending on the weather and ice conditions, we might attempt to reach the edge of the pack ice in the north, one of our favorite places to spot polar bears.

Our voyages are especially designed to experience the Arctic in a way that respects our fragile polar environment. We will never approach or follow the polar bears. Instead, we wait for the animals to come to us for the most authentic experience. In addition to bears, we expect to encounter a **wide variety of arctic wildlife** including walrus, whales, reindeer, arctic foxes and many species of birds.

By travelling on board a small expedition yacht with only 12 guests, we can offer you a rich and in-depth experience. We will take advantage of light and other one-of-a-kind opportunities which can vary from day to day. This is an expedition in the true sense of the word!



EXAMPLE ITINERARY

SVALBARD EXPEDITION CRUISE

There is no fixed route for this itinerary. The ice conditions and wildlife behaviour will determine our plans. The success of this trip is based on realistic expectations and your personal flexibility.

Arrival & boarding

Your Svalbard voyage starts in Longyearbyen, where the expedition yacht is ready to welcome you in port. Boarding takes place late in the afternoon. You will have some time to get comfortable and meet the crew and your fellow guests. Departing from Longyearbyen, the ship will sail through Isfjorden, the gateway to the west coast of Svalbard. Almost the full spectrum of Svalbard's history, geology and biology can be found in this area.

Your expedition guides will determine the course of this voyage, always on the lookout for polar animals. Some days will be spent watching wildlife from the ship, while other days you might go on zodiac cruises or landings ashore.

Places we might visit:

Kongsfjorden

The pyramidal peaks of the majestic Tre Kroner mountains overlook Kongsfjorden, an inlet comprising several cultural-heritage sites. From gigantic calving icebergs to bird colonies, and research stations, Kongsfjorden offers a unique array of riches. To top it off, you'll likely cross paths with a few reindeer and arctic foxes!

Prins Karls Forland & Poolepynten

A unique location we could visit is Poolepynten, a 1.5 kilometer long headland on the eastern coast of the island Prins Karls Forland. This location is a popular walrus haulout, making it a good place to admire them from close range. It's a spectacular sight to see these huge animals in their natural environment.



© J. Varley



Krossfjorden & Magdalenefjorden

Krossfjorden offers a magnificent summary of Spitsbergen: glaciers falling into the sea (including the majestic Lillihook glacier front), snow-covered tundra, and historical sites. We might also enter Magdalenefjorden, an impressive setting of majestic mountains and glaciers, with scree slopes that are home to thousands of birds. The extended graveyard and remains of blubber ovens set in the Gravneset Peninsula bear testimony to the many whalers who used to find shelter in the fjord. Nowadays, the land welcomes a growing number of walruses.

Smeerenburgfjorden

Once home to a busy whaling station and a starting point for major Arctic expeditions, this legendary fjord where glaciers form a spectacular ice front against the sea, has now been claimed by wildlife. Walruses and seals are a likely sight, and bears might wander about the slopes of steep, rugged mountains. Take out your binoculars to have a look at the impressive little auk colonies that can be found here.

The ice edge

We hope to reach the edge of the pack ice. This is as far north as we can sail. From this point onwards, there is only ice all the way up to the north pole. Depending on the circumstances, we might navigate along the ice for some distance, in order to capture the unique feeling of being at the end of the world. If we are lucky, we might spot some bears here.



© Szymon Niezabitowski

Monacobreen

The impressive Monacobreen is a glacier reaching down into Liefdefjorden. The landscapes and icebergs provide some of the most spectacular views in the whole archipelago.

Wijdefjorden

Ice permitting, we'll navigate through Wijdefjorden and catch a glimpse of its highest peaks and former trapper stations.

Hinlopen Strait and Murchisonfjorden

We might sail to Murchisonfjorden, a fjord on the western side of Nordaustland, in the northern part of Hinlopen Strait. It has many small islands, desert-like landscapes and some unique historical sites. One of the largest and most remarkable bird colonies on the archipelago is nestled among the steep cliffs made up of dark basaltic rock and bright limestone. Ice permitting, we'll resume our search for polar bears as we continue northeast.

On our longer voyages, we might attempt a circumnavigation of Svalbard, offering you a chance to explore the eastern and southern parts of the archipelago. However, when the pack ice prevents us from navigating further east, we will travel back via the north and west coast while keeping an eye out for wildlife.

End of your voyage - Longyearbyen

You'll disembark in Longyearbyen. This is the end of your Waterproof Expedition, and we wish you a pleasant journey home.

YOUR GUIDES

POLAR EXPERTS

EXPEDITION LEADER: RINIE VAN MEURS

You will be accompanied on your journey by expert photographer and expedition leader Rinie van Meurs. He is the only person who spent 31 consecutive years as an expedition leader in Svalbard, and logged more than 250 cruises in Svalbard only! He has been fortunate to photograph and study many Polar Bears in the Arctic and has become passionate about these magnificent animals as well as other Arctic wildlife. He developed a broad interest in the entire sea ice ecosystem and marine life which resulted in his book 'The Future Polar Bear: The impact of the vanishing sea ice on an Arctic ecosystem'. Rinie will show you the most beautiful places in Svalbard and gives expert advice on photography in this unique environment.

Rinie: *"The vast wilderness and the animals are the main reasons why I keep coming back to the Arctic. I look at the weather forecast, ice charts, locations of other ships, and take into account my experiences from previous trips to make a plan. It's my goal to provide guests with as many spectacular sightings as possible, without disturbing the wildlife. I myself have been an avid photographer for 40 years. I take the light into account and inform my guests in advance about what (not) to do during a 'close' encounter with a Polar Bear in the pack ice to maintain the encounter for as long as possible."*

EXPEDITION GUIDE: SZYMON NIEZABITOWSKI

Szymon was born in Cracow, Poland, where he studied Biology and Geography and received a graduate degree in Faculty of Biology and Earth Sciences. After he finished his studies he worked for the Institute of Systematics and Evolution of Animals. From the earliest years of his life he has been a passionate naturalist and mountaineer with a special interest in the geography and the wildlife of the higher latitudes. In the summer of 2018 Szymon fulfilled his biggest dream and became a circumpolar guide, spending almost half a year on Spitsbergen, where he could admire the true wildness of the Arctic. This was the start of his career as an expedition guide on board ships in the polar regions and Northern Norway on the 'Winter Whales of Norway' trips with Waterproof Expeditions.

Szymon: *"The majority of our polar bear encounters are in the sea ice, the most beautiful place to meet them. We travel on board a specific ship that has the capability to go into that environment. Strong, but also small, with outside decks close to the water in order to photograph the Polar Bears at a good angle. We have no fixed itinerary and might stay in the same area for several days, at one with the environment. This increases our chances of seeing wildlife dramatically compared to standard expeditions on larger ships."*



DATES & RATES SVALBARD 2025

On board Explorer - 12 guests

	Single Cabin	Single Deluxe	Superior Suite	Executive Suite
19 June - 28 June (10 days / 09 nights)	€ 12.600 pp	€ 13.100 pp	€ 12.600 pp	€ 13.900 pp
28 June - 13 July (16 days / 15 nights)	waitlist	waitlist	waitlist	waitlist
13 July - 24 July (12 days / 11 nights)	€ 15.300	€ 15.800	€ 15.500 pp	€ 16.500 pp

All prices are per person, based on full occupancy and depending on availability. If you prefer a double cabin for single use, please note that a single supplement is applicable.

Included in your voyage:

- Accommodation on board
- Breakfast, lunch & dinner
 - Starts with dinner on the first night, ends after breakfast on the last day
- Coffee, tea & water throughout the day
- Warm zodiac suits and boots
- Use of sauna & hot tub
- Lectures by the experienced guides
- All service taxes and port fees

Not included:

- Flights & transfers
- All items of a personal nature such as laundry, bar drinks, etc.
- Gratuities for ships crew and expedition staff
- Pre and post voyage excursions and hotel.

Insurances:

Travel Insurance with worldwide medical evacuation coverage is mandatory. We also strongly recommend you take out a trip cancellation insurance. This will cover your cancellation costs in case you need to cancel your trip after you confirmed your booking.

PAYMENTS

If you are interested in signing up, please inform us by e-mail. We require a 30% deposit to confirm your booking. Once we have received your deposit, your place onboard is guaranteed. The final payment is due 3 months prior to departure.

We accepts payments via bank transfer or by credit card (Visa, Mastercard or American Express). The bank information and payment details will be provided on the invoice. If you prefer to pay by credit card, we will send you a secure credit card payment request via e-mail. Please note, a 4% fee for credit card payments is applicable.



MEET OUR EXPEDITION SHIP

WELCOME ON BOARD





EXPLORER

EXPEDITION CRUISING
WITHOUT COMPROMISING
ON COMFORT

CAPACITY: 12 PASSENGERS | CABINS: 9 | DECKS: 4 | REFURBISHED: 2021 | LENGTH: 46M

Polar yacht Explorer was originally built in 1994 as an oceanographic research vessel. It has been renovated to reduce its impact on the environment and the interior has been completely redesigned. The refurbished polar yacht now offers the most refined and high-end small ship cruising experience in the Arctic.



The multiple level observation decks offer plenty of opportunities for photography, or you can choose to spend some time on the bridge scanning the horizon for wildlife. The spacious panoramic lounge has comfortable seating areas where you can relax and attend our guides' lectures. The gym, sauna, and jacuzzi are available for you to unwind after a long day of exploring. On the upper deck: 2 Single cabins and 2 comfortable Executive Suites with floor-to-ceiling windows, double beds and direct access to the deck. On the lower deck you find 2 Superior Suites, and 3 Deluxe Suites for single travellers. Each room has windows or portholes. With **only 12 guests** on board, it feels like you are on a private luxury expedition!



ACCOMMODATION



EXPLORER - 12 GUESTS



EXECUTIVE SUITE

- Spacious suite
- Double bed
- Luxury bathroom with walk-in shower
- Desk with chair
- Floor to ceiling window
- Situated on the upper deck
- Direct access to outside deck



SUPERIOR SUITE

- Comfortable suites
- Double bed or twin beds
- Luxury bathroom with walk-in shower
- Desk with chair
- Porthole windows
- Situated on the lower deck



SINGLE DELUXE SUITE

- For single travellers
- Comfortable suite for private use
- Double or twin beds
- Luxury bathroom with walk-in shower
- Porthole windows
- Situated on the lower deck



SINGLE CABIN

- Comfortable cabin for single travellers
- Single bed
- Bathroom with shower
- Desk with chair
- Picture window
- Situated on the upper deck



 **WATERPROOF®**
EXPEDITIONS



WATERPROOF®
EXPEDITIONS

SVALBARD 2025

ON LAND & IN THE WATER



SIGNATURE EXPEDITION



DISCOVER THE WORLD OF WATERPROOF

Dear guest,

Our **Waterproof Signature Expeditions** are carefully designed voyages with unique features. These small-group expeditions take place on luxury polar yachts, guided by our own team of experts. The flexibility of a small expedition yacht makes it possible to optimise every opportunity to show you the best of the Arctic. We intend to reach places far removed from where most large vessels are sailing.

Accompanied by experts and a small group of like-minded guests, you will uncover the fascinating wilderness of the Arctic. We will alter our plans to take advantage of (day)light, weather, wildlife sightings and other opportunities which may vary from day to day.

Bring a good portion of adventurous spirit and be prepared for cold but rewarding days out at sea. The combination of wildlife, beautiful scenery and a comfortable expedition ship, creates an unforgettable experience. This is true expedition style travel!

Marlynda Elstgeest
CEO & Owner





SVALBARD ON LAND & IN THE WATER

WATERPROOF SIGNATURE EXPEDITION

Dates: 22-31 July 2025 (10 days) | **Embarkation:** Longyearbyen | **Ship:** Polarfront | **Including activities!**

Our new 10-day **Svalbard Expedition** on board **Polarfront** offers you a unique and personal experience, unlike any other! With a small group of only 16 guests, we will not only explore Svalbard by sailing along the magnificent coastline, but through immersive activities on land and in the water.

Waterproof Experts **Johnny van Vliet** and **Debbie Bouma** will be your expedition guides on this exciting voyage. Using their knowledge of the Arctic, they will bring you to places where we have the best chances of finding wildlife, away from where most other vessels are sailing. We expect to encounter a wide variety of polar animals including walrus, reindeer, arctic foxes, many species of birds and possibly whales and polar bears. Using our two zodiacs, all guests can join landings at once, maximising your time ashore. A great advantage over larger ships!

In July, the midnight sun offers us plenty of time to explore the beautiful nature of Svalbard in a fun and active way. Weather and ice conditions permitting, we hope to offer you a chance for **snorkeling** in the cold Arctic waters, something only a handful of people have ever done! We will also plan **zodiac cruises** and **hikes** ashore, and you might even be able to take a ride on our special **pedal boat**. During lectures on board, you will learn all about the polar animals, their natural environment and the history of Svalbard.

With spacious cabins, a panoramic sauna and hot tub on deck, our small expedition yacht Polarfront provides a rich experience. In addition to optimising the onboard comfort, Polarfront is currently being renovated to reduce its emissions and reach the highest standards of environmental protection. This allows you to enjoy the most refined voyage in the Arctic in a safe and responsible way.



EXAMPLE ITINERARY

SVALBARD EXPEDITION CRUISE

There is no fixed route for our voyage. The ice conditions, weather and wildlife will determine our plans. Activities will be offered when the elements are in our favour. This is an expedition in the true sense of the word, we count on your realistic expectations and flexibility.

DAY 1 | Arrival & boarding

Your Svalbard Expedition starts in Longyearbyen, where Polarfront will be ready to welcome you on board. Boarding takes place late in the afternoon. You will have some time to get comfortable and meet the crew and your fellow guests. Departing from Longyearbyen, the ship will sail through Isfjorden, the gateway to the west coast of Svalbard. Almost the full spectrum of Svalbard's history, geology and biology can be found in this area. You will see wide coastal plains, steep glaciers and the characteristic plateau-shaped mountains that are so unique to Svalbard.

Your expedition guides will determine the course of this voyage, always on the lookout for polar animals. Some days might be spent watching wildlife from the ship, while other days you could go on zodiac cruises, shore landings and other off-ship activities.

DAY 2-9 | Exploring Svalbard

Places we might visit during our expedition:

Kongsfjorden

The pyramidal peaks of the majestic Tre Kroner mountains overlook Kongsfjorden, an inlet comprising several cultural-heritage sites. From gigantic calving icebergs to bird colonies, and research stations, Kongsfjorden offers a unique array of riches. To top it off, you'll likely cross paths with a few reindeer and arctic foxes!

Prins Karls Forland & Poolepynten

A unique location we could visit is Poolepynten, a 1.5 kilometer long headland on the eastern coast of the island Prins Karls Forland. This location is a popular walrus haulout, making it a good place to admire them from close range. It's a spectacular sight to see these huge animals in their natural environment.



Krossfjorden & Magdalenefjorden

Krossfjorden offers a magnificent summary of Spitsbergen: glaciers falling into the sea (including the majestic Lillihook glacier front), snow-covered tundra, and historical sites. We might also enter Magdalenefjorden, an impressive setting of majestic mountains and glaciers, with scree slopes that are home to thousands of birds. The extended graveyard and remains of blubber ovens set in the Gravneset Peninsula bear testimony to the many whalers who used to find shelter in the fjord. Nowadays, the land welcomes a growing number of walruses.

Smeerenburgfjorden

Once home to a busy whaling station and a starting point for major Arctic expeditions, this legendary fjord where glaciers form a spectacular ice front against the sea, has now been claimed by wildlife. Walruses and seals are a likely sight, and bears might wander about the slopes of steep, rugged mountains. Take out your binoculars to have a look at the impressive little auk colonies that can be found here.

The ice edge

We hope to reach the edge of the pack ice. This is as far north as we can sail. From this point onwards there is only ice all the way up to the north pole. Depending on the circumstances, we might navigate into the ice for some distance, in order to capture the unique feeling of being on the end of the world. If we are lucky, we might spot some bears here.



Monacobreen

The impressive Monacobreen is a glacier reaching down into Liefdefjorden. The landscapes and icebergs provide some of the most spectacular views in the whole archipelago.

Wijdefjorden

Ice permitting, we'll navigate through Wijdefjorden and catch a glimpse of its highest peaks and former trapper stations.

Hinlopen Strait and Murchisonfjorden

We might sail to Murchisonfjorden, a fjord on the western side of Nordaustland, in the northern part of Hinlopen Strait. It has many small islands, desert-like landscapes and some unique historical sites. One of the largest and most remarkable bird colonies on the archipelago is nestled among the steep cliffs made up of dark basaltic rock and bright limestone. Ice permitting, we'll resume our search for polar bears as we continue northeast.

When the pack ice prevents us from navigating further east, we will travel back the way we came, this time visiting different locations than on our way north.

DAY 10 | End of your voyage - Longyearbyen

You'll disembark in Longyearbyen. This is the end of your Waterproof Expedition, and we wish you a pleasant journey home.



YOUR GUIDES



POLAR EXPERTS

EXPEDITION LEADER: JOHNNY VAN VLIET

Johnny is a passionate ecologist from the Netherlands. His love for nature and wildlife has led him to a unique career path as an Expedition Leader & Guide in the polar regions. Combining his expertise in ecology with his adventurous spirit, he thrives in the remote and icy landscapes. Whether it's through climbing a mountain, navigating the Arctic waters in a zodiac, or during lectures on board, Johnny loves to share his knowledge about animals, landscapes, and the profound impact of human activity on the environment.

Driven by a deep commitment to wildlife conservation, Johnny utilizes his talents in photography to shed light on the importance of protecting our planet's fauna. His photography serves as a powerful tool to raise awareness and inspire action. His journey took an exciting turn when he brought his Wildlife-Conservation photography onboard expedition ships, allowing him to share his passion with fellow adventurers from around the globe.

Johnny's dedication and talent haven't gone unnoticed. Recently, he was honored as one of the finalists in The Nature Conservancy's prestigious 2023 Global Photo Contest. His remarkable work continues to inspire others to appreciate, cherish, and protect our planet's natural wonders.

Johnny: *"Let's explore the world. Follow a chart to its edges, and keep going. Forget the plans. Trust our instincts. Let curiosity be our guide."*

EXPEDITION GUIDE: DEBBIE BOUMA

Debbie Bouma is a passionate zoologist with over a decade of experience working with various marine mammals, like Dolphins, Seals and Walrus. Her journey into the world of wildlife began from a young age, where she found her calling studying and understanding the intricacies of marine life, specializing in animal welfare, research and behavior.

Driven by her love for animals and a deep-rooted desire to share her passion with others, Debbie started her career as an expedition guide. Combining her expertise in zoology with her love for travel, she enthusiastically takes guests to experience the wonders of our polar regions up close.

Debbie's commitment to wildlife conservation and education shines through in every aspect of her work. Whether leading expeditions to remote corners of the globe, lecturing about animal behavior or capturing breathtaking moments through her lens, she aims to foster a deeper connection between people and nature.

With a keen eye for photography and an unwavering dedication to conservation, Debbie Bouma continues to inspire others to appreciate and protect the beauty of our planet's wildlife.

Debbie: *"I will always prioritise the animals and their behavior. We are visitors in their home, and I will always respect that."*





ACTIVITIES

INCLUDED IN YOUR EXPEDITION

ZODIAC CRUISING



During this expedition cruise we will try to spend as much time out exploring as possible. Zodiacs are used for transferring you ashore and for taking you ocean-level cruising in the fjords and along glacier fronts. With our two zodiacs, all 16 passengers will be able to join the outings at the same time.

POLAR SNORKELING



Weather and wildlife permitting, we hope to go snorkeling at least once. Only a few people have ever witnessed the interesting under water world of Svalbard. You might see sea-snails, crabs, and various Arctic fish. If very lucky, you might also spot marine mammals! We will provide you with high quality Waterproof gear.

HIKES & WALKS



Shore hikes are a great way to explore the nature and landscape from up close. Our walks can vary in length and might take you over spongy tundra, crusty snow, sandy beaches or to the top of lookouts. We aim to offer plenty of time for photography, learning moments, or just time to stand back and enjoy the incredible surroundings.

PEDAL BOAT



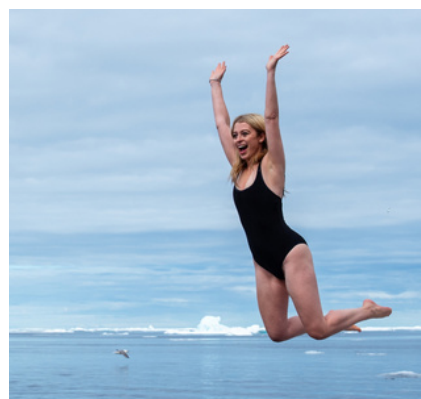
On board Polarfront we have a very unique piece of nautical equipment, a pedal boat! If the weather and wildlife conditions allow, you will have a chance to take this special type of water bike for a tranquil ride on the ocean.

PHOTOGRAPHY



This expedition is perfect for photographers who want quality time in the Arctic. You will enjoy long days with plenty of daylight. Our expert guides are happy to share their knowledge about photography in this unique environment in order for you to improve your skills.

POLAR PLUNGE



Depending on the weather, we will also offer a Polar Plunge, a chilling jump into the cold Arctic water! Not many people can say they swam in the sea above the Arctic circle, a once in a lifetime opportunity! Afterwards, simply hop in the sauna or take a warm bath in the hot tub to heat up.

We do our utmost to offer all guests a chance to participate in our activities, but have no control of the weather, ice or wildlife.



ARCTIC WILDLIFE

WE HOPE TO ENCOUNTER



MEET OUR EXPEDITION SHIP

WELCOME ON BOARD



Refit planned
in 2024



POLARFRONT

OUR SPACIOUS BOUTIQUE-STYLE POLAR YACHT

CAPACITY: 16 PASSENGERS | CABINS: 8 | DECKS: 3 | REFURBISHED: 2018 | LENGTH: 55M

MS Polarfront is a luxurious expedition vessel that is sturdy enough to bring you to destinations high up in the Arctic. The world's last weather ship, Polarfront was built to face rough seas and harsh weather conditions. After her years as a weather ship, MS Polarfront has started a second life as an arctic expedition cruise vessel.



The ship was nicely refurbished in 2018 and had another important upgrade in January 2024. Polarfront offers a luxurious and high-end experience for its' 16 passengers. All 8 twin suites are on the lower deck and have at least 2 porthole windows. The suites are very spacious and each has their own comfortable bathroom with shower. You'll also find a hair dryer, bathrobes and amenities in your room.

Polarfront has a large outside deck space at the front of the ship as well as on the back, ideal for photography. On the aft deck you will also find a panoramic sauna and hottub to warm up after a long cold day out on the arctic seas, a great way to unwind and enjoy the scenery in a relaxing way. Inside, there's a comfortable salon, dining area, library and fitness room. There are 2 zodiacs and a unique pedalboat for immersive excursions close to nature.





THE FUTURE OF POLAR TRAVEL

Propulsion & power production retrofit 2024

Polarfront is an exceptional ship. She has been maintained with substantial resources throughout her long career and recent surveys reveal that the structure is in excellent condition. In an ongoing effort to limit the environmental impact, state of the art technologies will be retrofitted to replace the propulsion and power systems, to reduce the ship's fuel consumption, and to improve safety of navigation as well as comfort on board.

From the propeller to the controls on the bridge, in January 2024, all systems will be renewed:

- Electric propulsion with 2 motors
- High efficiency propeller
- Generators with exhaust reduction systems
- Electric shore connection
- High efficiency boiler
- Heat recovery system from the engines

Comfort and Silence

The electric propulsion systems that will be implemented are extremely quiet. The propeller with 5 fixed blades is inspired by the ones used on submarines. In addition, all engines and their components will be mounted on 'silent blocks' to further prevent sounds and vibrations. These noise reductions will dramatically improve the comfort of guests on board. It will allow you to fully immerse yourself into the remote Arctic and take in all the views and sounds without the disturbance of engines and generators.

Minimizing the environmental impact

All improvements combined are estimated to reduce fuel consumption by 35%. The CO2 savings are expected to be equivalent to the absorption of approximately 17,500 trees per year.

Since our objective is to explore the polar regions in the most sustainable way possible, reducing the noise impact has become one of our main concerns. Not only for guests on board, but especially for wildlife. It has been proven that marine mammals are very sensitive to noises transmitted by ships in the water.

Fit for the future

After the retrofit, Polarfront will be outperforming other small expedition ships sailing in the Arctic, on many levels:

- ✓ Electric propulsion systems
- ✓ Fulfilling the highest standards on air pollution
- ✓ Safest propulsion plant
- ✓ Most silent under water
- ✓ Most stable
- ✓ Comfortable and spacious accommodation
- ✓ Largest area of open decks

Adding to this the warm atmosphere and service on board, Polarfront is an ideal expedition yacht for voyages to the high Arctic.



ACCOMMODATION



16 GUESTS IN 8 SPACIOUS SUITES



EXECUTIVE SUITE

- Very large suite with seating area
- Twin beds or double bed
- Large bathroom + separate toilet
- 3 closets and open shelves
- 4 porthole windows



SUPERIOR SUITE

- Spacious suite
- Twin beds or double bed
- Private bathroom
- 2 or 3 porthole windows
- At least 2 closets for storage



DELUXE SUITE

- Twin beds or double bed
- Private bathroom
- 2 or 3 porthole windows
- At least 2 closets for storage
- Situated in the front or middle the ship
- Suites #1 and #3 can be connected as a family room



DATES & RATES

Expedition Cruise Svalbard: 22-31 July 2025 on board Polarfront

Executive Suite € 12.000 pp

Superior Suite € 10.900 pp

Deluxe Suite € 10.400 pp

Prices are per person and depending on availability. We can offer shared twin cabins on request. If you prefer a double cabin for single use, please note that a single supplement is applicable.

Included in your voyage:

- 9 Nights accommodation on board
- Breakfast, lunch & dinner
 - Starts with dinner on the first night, ends after breakfast on the last day
- Coffee, tea & water throughout the day
- All activities as mentioned in the programme
- Warm zodiac suits and boots
- Lectures by the experienced guides
- All service taxes and port fees

Not included:

- Flights, transfers & hotels
- All items of a personal nature such as laundry, bar drinks, meals ashore and phone charges
- Gratuities
- Insurance

Insurance:

Travel Insurance with worldwide medical evacuation coverage is mandatory. We also strongly recommend you take out a trip cancellation insurance. This will cover your costs in case you need to cancel your trip after you've confirmed your booking.

PAYMENTS

If you are interested in signing up, please inform us by e-mail. We will then send you our option booking form. After completing this form, you will receive an invoice. We require a 30% deposit to confirm your booking. Once we have received your deposit, your reservation is confirmed and your place onboard guaranteed. The final payment is due 3 months prior to departure.

We accept payments via bank transfer or by credit card (Visa, Mastercard or American Express). When paying via bank wire transfer, please make sure to include all bank charges for both sending and receiving banks. The bank information and payment details will be provided on the invoice.

If you prefer to pay by credit card, we will send you a secure credit card payment request via e-mail. Please note that we charge a 4% fee for credit card payments.



WATERPROOF[®] EXPEDITIONS

